

About *Erica* × *Lazaroana*
Rivas Goday & Bellot
(*E. arborea* Linnaeus × *E. umbellata* Linnaeus)

José María PIZARRO DOMÍNGUEZ

FONTQUERIA 55(53): 439-442 [seorsim 1-4]
MADRID, 10-III-2007

FONTQUERIA is a series of botanical publications without administrative affiliation. It publishes original works in Botany, particularly those that are of interest to the editors. Its publications are in any language, the only limitation being the ability of the editorial team.

Accredited with the *International Association for Plant Taxonomy* for the purpose of registration or new non-fungal plant names.

PRODUCTION

Database consultant: Guillermo GONZÁLEZ GARCÍA
Typesetting: Ambrosio VALTAJEROS POBAR, Ulpiano SOUTO MANDELOS
Screen operators: Samuel FARENA SUBENULLS, Emilio NESTARES SANTAINÉS
Preprinting: Sonja MALDÍ RESTREPO, Demetrio ONCALA VILLARRASO

DISTRIBUTION

Postal distribution: contact the editor
Mail for electronic distribution: Fontqueria@yahoo.com

EDITOR

Francisco Javier FERNÁNDEZ CASAS. Madrid (MA, MAF)

JOINT EDITORS

Araceli MOLEÓN GAVILANES. Madrid. English texts
Ramón MORALES VALVERDE. Madrid. German texts

EDITING CONSULTANTS for this fascicle

Julià MOLERO i BRIONES (BCN, Barcelona)
Josep María MONTSERRAT i MARTÍ (BC, Barcelona)

ISSN: 0212-0623

Depósito legal: M-29282-1982

About *Erica* × *Lazaroana* Rivas Goday & Bellot (*E. arborea* Linnaeus × *E. umbellata* Linnaeus)

José María PIZARRO DOMÍNGUEZ

Departamento de Biología Vegetal, II, Facultad de Farmacia, Universidad Complutense de Madrid. mafherb@farm.ucm.es

PIZARRO DOMÍNGUEZ, J. M. (10-iii-2007). About *Erica* × *Lazaroana* Rivas Goday & Bellot (*E. arborea* Linnaeus × *E. umbellata* Linnaeus). *Fontqueria* **55**(53): 439-442 [seorsim 1-4].

Keywords. Valid Hybrid species name, *Erica* (*Ericaceae*), Spain (Cádiz, Jaén).

Zusammenfassung. Der Bastard *Erica* × *Lazaroana* (*Ericaceae*) wurde in 1946 ohne eine lateinische Diagnose beschrieben, wobei dieser Name nicht gültig veröffentlicht wurde. Aber ihre Autoren machten es Synonym von einer Varietät, die von G. Bentham in 1839 veröffentlicht wurde.

Abstract. The hybrid species *Erica* × *Lazaroana* (*Ericaceae*) was proposed in 1946 without the prescriptive Latin diagnosis, that's why it has not been considered validly published. But the name was proposed as substitute for a G. Bentham's variety from 1839.

Résumé. L'espèce hybride *Erica* × *Lazaroana* (*Ericaceae*) fut proposée en 1946 dépourvue de la prescriptive diagnose latine, pour cela le nom ne se considère pas valide. Mais l'espèce avait été proposée comme synonyme d'une variété de G. Bentham, publiée en 1839.

Resumo. A espécie híbrida *Erica* × *Lazaroana* (*Ericaceae*) foi proposta em 1946 sem a prescritiva diagnóstico latina, é por iso que não foi considerada como válida. Mas os seus autores fizeram seu nome sinônimo de uma variedade proposta por G. Bentham em 1839.

Resumen. La notospécie *Erica* × *Lazaroana* (*Ericaceae*) fue propuesta en 1946 sin la prescriptiva diagnóstico latina, por lo que no se ha considerado válidamente publicada. Pero sus autores la hicieron sinónima de una variedad de G. Bentham, publicada en 1839.

The name *Erica* × *Lazaroana* (*Ericaceae*) was proposed in 1946 by S. Rivas Goday and F. Bellot Rodríguez for naming a hybrid species between *Erica arborea* Linnaeus and *E. umbellata* Linnaeus. This name was considered a non valid proposition for lacking the prescriptive Latin diagnosis, cf. E. BAYER (1993). But in the protologue the authors made its name identical to *Erica umbellata* var. β *subcampanulata* Bentham in De Candolle, Prodr. 7(2): 666, n° 251 β (1839), therefore the Latin diagnosis was not pre-ceptive.

***Erica* × *Lazaroana* Rivas Goday & Bellot, *Anales Jard. Bot. Madrid* **6**(2): 152-153 (1946, "1945")**

"INDICATIO LOCOTYPICA": «Hab: cum *E. arboreae* et *umbellatae*, in quercetis suberis, inter Santa Elena et Aliseda, in montibus Marianis. S.»

"TYPUS": «In quercetis suberis. Alcornocal de la Aliseda. Comarca Santa Elena (Sierra Morena)», S. Rivas Goday & F. Bellot Rodríguez, *s/n*, 11-v-1941 (MAF 20627)

≡ *Erica umbellata* Linnaeus var. β *subcampanulata* Bentham in De Candolle, Prodr. 7(2): 666, n° 251 β (1839)

[≡] *Erica* × *subcampanulata* (Bentham in De Candolle) Rivas Goday & Bellot, *Anales Jard. Bot. Madrid* **6**(2): 153 (1946), nomen

ut *Erica arborea* Linnaeus × *Erica umbellata* Loeffling ex Linnaeus

INDICATIO LOCOTYPICA: «prope Cadix (*Picard*)»

TYPUS: *C. Picard*, (G-De Candolle, non vidimus)

BIBLIOGR.: G. BENTHAM (1839: 666, n° 251ß); H. M. WILLKOMM (1868: 347-348, n° 2113, ß);

H. M. WILLKOMM (1893: 136, n° 2113, ß); E. BAYER (1993: 506, 714, col. 2).

ICONOGR.: Laminæ nostræ i (pag. 441), ii (pag. 442: a-c)

“ABBREVIATA DIAGNOSIS vel character essentialis”

Habito *Ericam arboream* similis; paniculis densis racemis umbellularum instructis, pedunculis quam floribus subæquilongis, corollis campanulatis, sursum vix angustatis; styli exclusi, capitato subbifidi, in eadem inflorescentia staminibus tum inclusis tum subinclusis; sepalis 1/3 longitudinem corollis; antheris appendicibus laminato-scariosis; foliis falciformibus, crassiusculis, glabris, nitidis.

“MAIN DIAGNOSTIC FEATURES or diagnostic characters”

Similar in habit to *Erica arborea*; dense panicles made up of partial umbels clusters; peduncles as long as the flowers; campanulate corolla, slightly narrowed upwards; styles excluded, capitate subbifide; stamens many included as well as subincluded in the same inflorescence; sepals 1/3 of the length of the corolla; anthers with laminar escariose appendixes; leaves falciform, moderately thick, glabrous, shining.

ABOUT THE ORIGINAL MATERIALS in MAF Herbarium

Although a “type” sheet was not pointed out specifically in the publication, the authors’ will was expressed in a clear and unequivocal way in the corresponding sheet of the Herbarium MAF, where both worked at that time.

The sheet MAF 20627 is the only one found in such herbarium which fits the indications of the protologue; it keeps an annexed typewritten text which reproduces that of the publication very approximately.

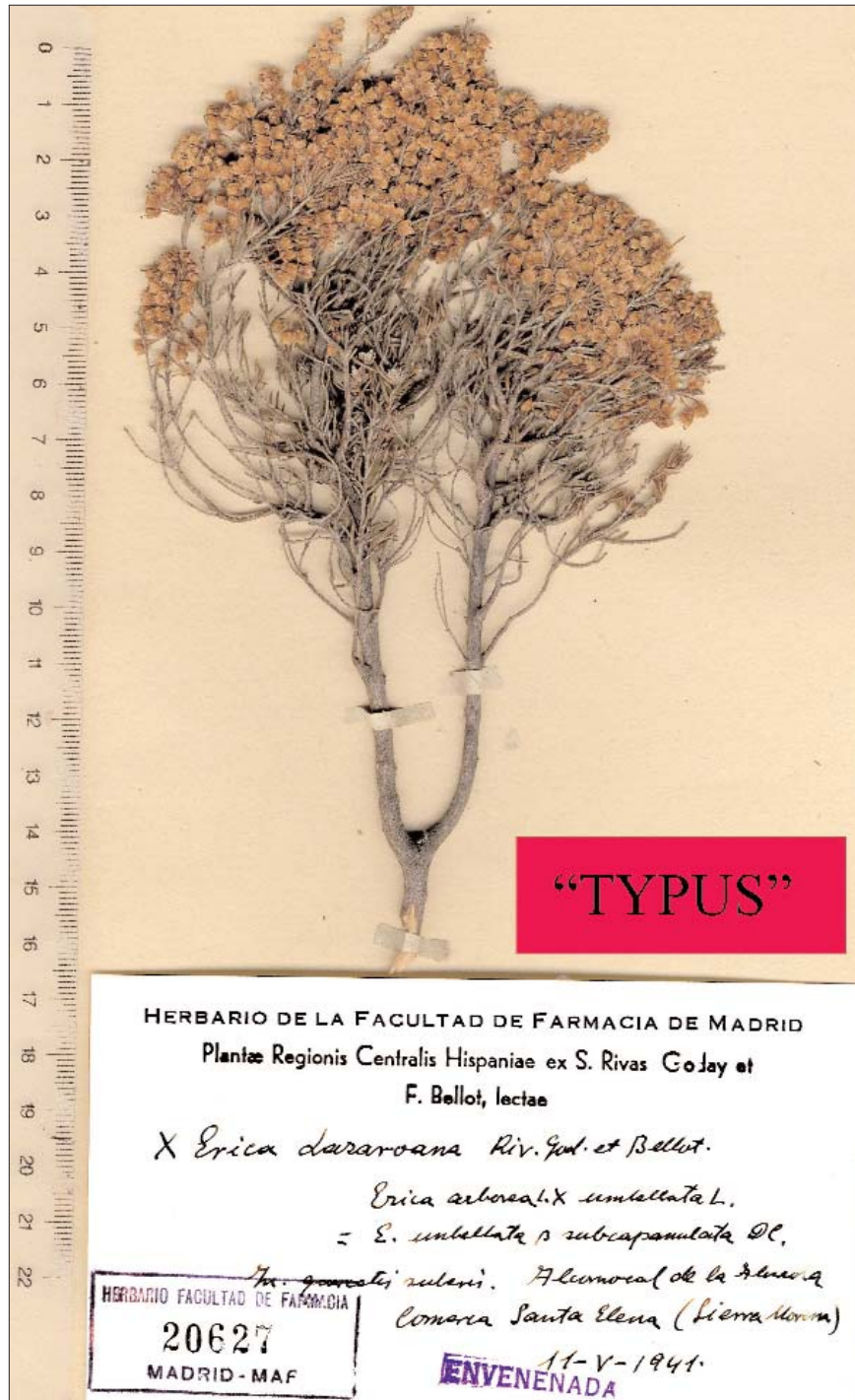
REGARDING THE ETYMOLOGY AND ORTHOEPY of the specific name

The specific name *Lazaroana* commemorates the name of Prof. Blas Lázaro e Ibiza, who founded in 1891 the herbarium named today with the achronyme MAF. The name is paroxytone, stressed in the penultimate syllable, Lazaroána.

LITERATURE CITED

- BAYER, E. (1993). 1. *Erica* L. In L. VILLAR PÉREZ (ed.) LXXIV. *Ericaceae*. In S. CASTROVIEJO BOLÍVAR, C. AEDO PÉREZ, C. GÓMEZ CAMPO, M. LAÍNZ GAYO, P. MONTSERRAT RECORDER, R. MORALES VALVERDE, J. F. MUÑOZ GARMENDIA, G. NIETO FELINER, E. RICO MARTÍNEZ, S. TALAVERA LOZANO, L. VILLAR PÉREZ, C. NAVARRO ARANDA & M. I. FERNÁNDEZ ARIAS (eds.) *Flora Ibeica. Plantas vasculares de la Península Ibérica e Islas Baleares. Vol. IV. Cruciferae-Monotropaceae*: 485-506.
- BENTHAM, G. (xii-1839). Tribus III. *Ericaceae* D. et G. Don gen. syst. 3. p. 843. Lyndl. nat. syst. ed. 2. p. 221. non ed. 1. nec. R. Br. In A. P. DE CANDOLLE (ed.) *Prodromus systematis naturalis regni vegetabilis, sive enumeratio contracta ordinum, generum, specierumque plantarum huc usque cognitarum, iuxta methodi naturales normas digesta*, 7(2): 612-712.
- WILLKOMM, H. M. (v/vi-1868). Fam. 72. *Ericaceae* Lindl. In H. M. WILLKOMM & J. M. C. LANGE (eds.) *Prodromus Florae Hispanicae seu synopsis methodica omnium plantarum in Hispania sponte nascentium vel frequentius cultarum quae innotuerunt*, 2(2): 339-349.
- WILLKOMM, H. M. (1893). *Supplementum Prodromi Florae Hispanicae sive enumeratio et descriptio omnium plantarum inde ab anno 1862 usque ad annum 1893 in Hispania detectarum que innotuerunt auctori, adjectis locis novis specierum jam notarum*. Stuttgart, x + 370 págs.

LÁMINA I. *Erica* × *Lazaroana* Rivas Goday & Bellot. S. Rivas Goday & F. Bellot Rodríguez, 11-v-1941 (MAF 20627), the authors' original voucher.



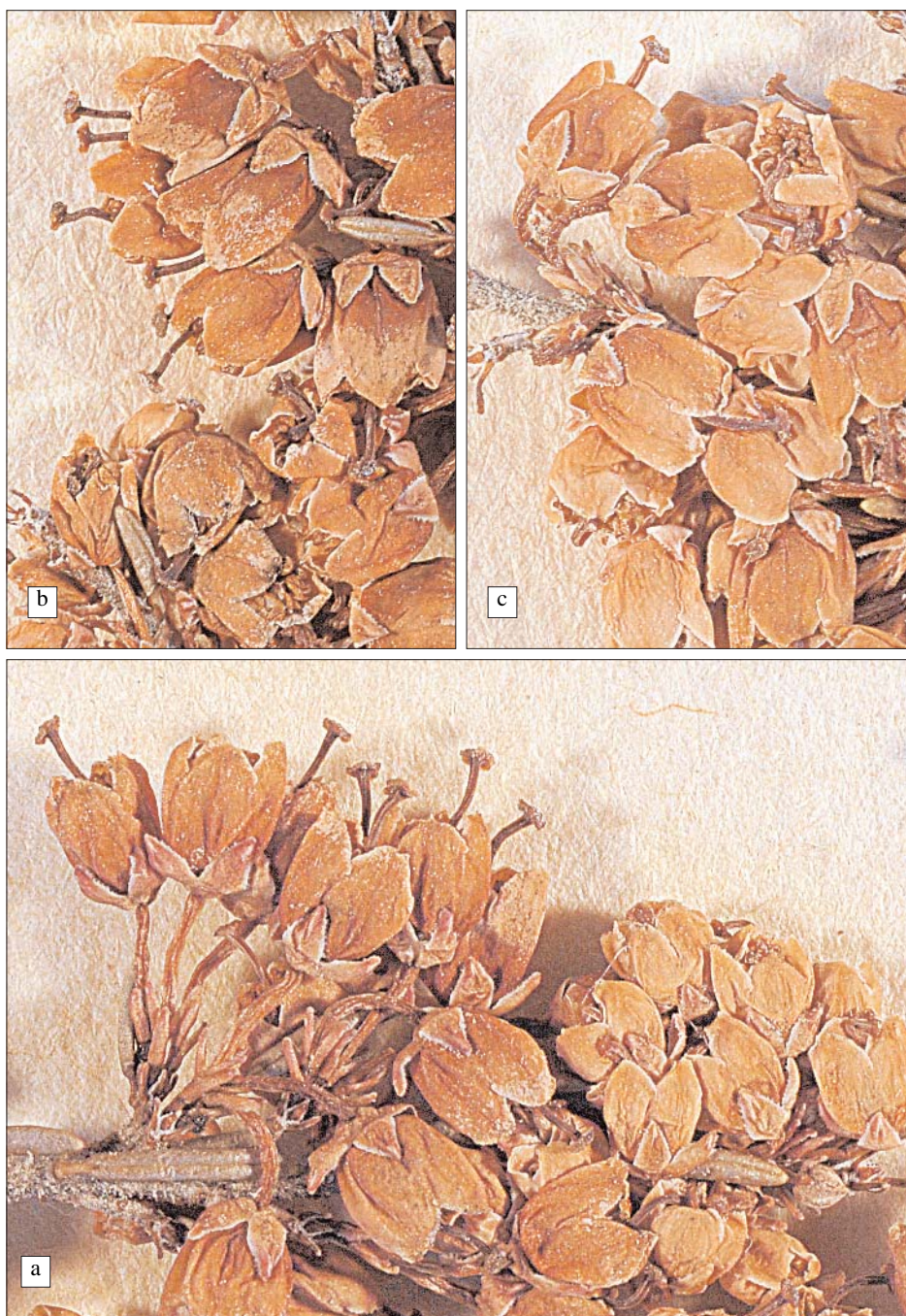


LÁMINA II. *Erica* × *Lazaroana* Rivas Goday & Bellot. S. Rivas Goday & F. Bellot Rodríguez, 11-v-1941 (MAF 20627), the original authors' voucher. a, b, c) Flowers.