

Document de treball de l'IEB 2011/42

BEACHES, SUNSHINE, AND PUBLIC-SECTOR PAY: THEORY AND EVIDENCE ON
AMENITIES AND RENT EXTRACTION BY GOVERNMENT WORKERS

Jan K. Brueckner, David Neumark

Cities and Innovation

Document de
treball de l'IEB

**BEACHES, SUNSHINE, AND PUBLIC-SECTOR PAY:
THEORY AND EVIDENCE ON AMENITIES
AND RENT EXTRACTION BY GOVERNMENT WORKERS**

Jan K. Brueckner, David Neumark

The **IEB** research program in **Cities and Innovation** aims at promoting research in the Economics of Cities and Regions. The main objective of this program is to contribute to a better understanding of agglomeration economies and 'knowledge spillovers'. The effects of agglomeration economies and 'knowledge spillovers' on the Location of economic Activities, Innovation, the Labor Market and the Role of Universities in the transfer of Knowledge and Human Capital are particularly relevant to the program. The effects of Public Policy on the Economics of Cities are also considered to be of interest. This program puts special emphasis on applied research and on work that sheds light on policy-design issues. Research that is particularly policy-relevant from a Spanish perspective is given special consideration. Disseminating research findings to a broader audience is also an aim of the program. The program enjoys the support from the **IEB-Foundation**

The **Barcelona Institute of Economics (IEB)** is a research centre at the University of Barcelona which specializes in the field of applied economics. Through the **IEB-Foundation**, several private institutions (Caixa Catalunya, Abertis, La Caixa, Gas Natural and Applus) support several research programs.

Postal Address:

Institut d'Economia de Barcelona
Facultat d'Economia i Empresa
Universitat de Barcelona
C/ Tinent Coronel Valenzuela, 1-11
(08034) Barcelona, Spain
Tel.: + 34 93 403 46 46
Fax: + 34 93 403 98 32
ieb@ub.edu
<http://www.ieb.ub.edu>

The IEB working papers represent ongoing research that is circulated to encourage discussion and has not undergone a peer review process. Any opinions expressed here are those of the author(s) and not those of IEB.

**BEACHES, SUNSHINE, AND PUBLIC-SECTOR PAY:
THEORY AND EVIDENCE ON AMENITIES
AND RENT EXTRACTION BY GOVERNMENT WORKERS**

Jan K. Brueckner, David Neumark

ABSTRACT: The absence of a competitive market and the presence and strength of public-sector labor unions make it likely that public-sector pay reflects an element of rent extraction by government workers. In this paper, we test a specific hypothesis that connects such rent extraction to the level of local amenities. Specifically, although migration of taxpayers limits the extent of rent-seeking, public-sector workers may be able to extract higher rents in regions where high amenities mute the migration response. We develop a theoretical model that predicts such a link between public-sector wage differentials and local amenities, and we test the model's predictions by analyzing variation in these wage differentials and amenities across states. The evidence reveals that public-sector wage differentials are, in fact, larger in the presence of high amenities, with the effect being stronger for unionized public-sector workers, who are likely better able to exercise political power in extracting rents.

JEL Codes: J3, J45, R12

Keywords: Public-sector pay, unions, amenities.

Jan K. Brueckner
Department of Economics
University of California, Irvine
E-mail: jbrueck@uci.edu

David Neumark
Department of Economics
University of California, Irvine &
National Bureau of Economic Research
E-mail: dneumark@uci.edu

1. Introduction

Public-sector pay is not set in competitive markets. Public-sector unionization is high (Visser, 2006), and public-sector unions are strong and active politically (DiSalvo, 2010). As a consequence, the pay of public-sector workers is likely to reflect, in part, the extraction of rents from taxpayers. Indeed, the potential for public-sector workers to influence pay (and employment) has long been noted by labor economists (Freeman, 1986).

The issue of public-sector pay has come to the fore lately, in part because of state budget woes. The media and blogosphere are replete with stories about overpaid public-sector workers, from prison guards in California,¹ to teachers and other public-sector workers in New Jersey,² to unionized public-sector workers generally.³ Not surprisingly, the reality is more complex. Looking at the public sector in the aggregate reveals that, currently, public-sector workers are not overpaid. Although for both men and women, data from 2000 reveal a positive pay gap between the public and private sectors (about 11 percent for men and 20 percent for women), in earnings regressions with the usual controls, there is a negative pay differential for working in the public sector of 6 percent for men, and no pay differential for women (Borjas, 2002).⁴ On the other hand, researchers have pointed to pensions and other benefits for public-sector workers that are very generous, particularly when account is taken of underfunded pension liabilities and how they are calculated (Biggs, 2010a, 2010b; DiSalvo, 2010). In addition, the power of public-sector unions, as exemplified by the extensive union involvement in efforts to recall governors in California,⁵ suggests that substantial scope for rent extraction may exist.

Freeman (1986), however, argued against the ability of public-sector unions to extract high rents, using a Tiebout-sorting view of the world: “Citizens unhappy with [the] level of public services can move elsewhere, reducing the taxable population and thus the ability to pay public sector wages. Mobility places great constraints on public-sector union bargaining power” (p. 51). But this view need not rule out specific cases where public-sector workers are overpaid. Indeed, casual inference based on the stories cited above suggests that high public-sector pay may be a phenomenon confined to particular states—specifically those states well endowed with the amenities often emphasized by urban economists. Facing a high willingness-to-pay on the part of potential residents to live in a high-amenity state, public-sector workers may have

more leeway for rent extraction, leading to a link between public-sector wages and amenities. The purpose of the present paper is to test for such a link.

Initial suggestive evidence for this wage-amenity connection is contained in Figure 1, which plots state-level public-sector wage residuals (representing the wage component not explained by the usual controls) against state-level private-sector wage residuals.⁶ The solid line has slope equal to one, so that points on the line represent a state in which the public-sector and private-sector wage premia for the state are equal. While most of points are in fact below the line, note the identities of the states above the line—states where the public-sector premium is larger than the private-sector premium and hence where public-sector workers are “overpaid.” These states have warm weather (California and Florida), low rainfall (Nevada), a coastal location (e.g., New York, New Jersey, and Rhode Island), and large, dense urban areas (New York, New Jersey, and California). Thus, Figure 1 suggests that rent extraction may be occurring in places where people like to live.

We develop and test a model that explores this hypothesis. Building on existing work on the public sector (e.g., O’Brien, 1992; Rose and Sonstelie, 2010; Zax and Ichniowski, 1988), we presume that public-sector workers—especially unionized ones—have some ability to determine their pay (and perhaps also their levels of employment) through the political process. Consistent with Freeman’s argument, we would expect that this political power would face limitations, because if public-sector workers extract rents (and thus taxes) that are too high relative to the level of desired publicly-produced goods and services, then taxpayers will vote with their feet, depriving public-sector workers of the tax base from which to extract rents. However, in locations with strong amenities, public-sector workers may have more ability to extract rents, as these amenities drive wedges between the utility of taxpayers in different locations that public-sector workers can exploit.

Our stylized theoretical model takes an extreme viewpoint by assuming that the public sector is fully controlled by its workers, who have the power to set the public-good level as well as taxes, which cover both the nonlabor cost of the good as well as their own high wages. These workers set taxes along with the level of the public good to maximize the public-sector wage, taking the induced migration between regions into account. The key results of the

model connect the wage levels of both public and private-sector workers to the level of a region's amenities. As captured in Figure 1, the main empirical hypothesis is that *amenities raise the public-sector wage relative to the private-sector wage*, a consequence of the improved rent-extraction potential in a high-amenity region. The model also predicts that public-sector wages should be higher in an absolute sense in high-amenity regions.

Our model is related to the large literature on tax competition, in which local governments make fiscal decisions taking into account the footloose nature of business investment, which is deterred by high local taxes. Here, though, the focus is on mobile private-sector workers rather than mobile business capital. Within this literature, which is surveyed by Wilson (1999), the paper is most closely connected to models of tax competition by rent-seeking rather than benevolent local governments, as exemplified by Edwards and Keen (1996). Our framework also shares elements of models in the Roback (1982) tradition, which show how amenity differences affect interregional patterns of wages and house prices.

The model's predictions are tested using Current Population Survey data. We estimate standard log wage regressions that include a public-sector wage differential, a wage differential associated with local amenities, and an interaction between these two differentials. The interaction coefficient reveals that the public-sector wage differential is larger in the presence of strong amenities, as predicted by the theory. The results are remarkably robust. They emerge for public-sector workers overall, and for two large groups of public-sector workers that are the focus of much attention with regard to pay: teachers and prison guards (or correctional officers). Moreover, the evidence is particularly strong for unionized public-sector workers, who are presumably better able to exercise political power to extract rents.

The paper's empirical work bears a close resemblance to empirical studies in the Roback tradition. A common approach to implementing the Roback (1982) model, as exemplified by Blomquist, Berger and Hoehn (1988), is to estimate two regressions relating individual wages and house prices to regional amenity levels.⁷ The results of these regressions are then merged to generate estimates of consumer amenity valuations, building on the theory. Our key regression is similar to a Roback-style wage regression, except that it includes, along with the usual amenity measures, terms that interact the amenity levels with a public-worker dummy

variable. The coefficients of the (uninteracted) amenity levels give the usual impact of amenities on private-sector wages, while the interaction coefficients give the differential amenity effect on public-sector wages, which the theory predicts is positive. Moreover, if unionized workers have more ability to extract rents, then their amenity interaction coefficient should be larger than the coefficient for public-sector workers as a whole. The empirical results strongly conform to all these expectations. In addition, they confirm the prediction that amenities raise the absolute level of public-sector wages.

Section 2 of the paper develops the theoretical model, while section 3 describes the data. Section 4 presents the empirical work, and section 5 offers conclusions.

2. Model

2.1. Basic analysis

The economy has two regions, with region 1 having a positive amenity level and region 2 a zero level (a normalization). Region 1's amenity could have a consumption component (denoted a) as well as a component that raises worker productivity (denoted b). There are two groups of residents in each region: private-sector workers, who are mobile across regions, and public-sector workers, who are immobile.⁸ This latter group has captured control of the public sector in each region, and thus has the ability to set the public-good level as well as taxes.⁹ Taxes pay for the cost of the public good while also covering rent extraction by the public-sector workers, in the form of excessive wages. For simplicity, public-sector workers do not consume the good they produce, so that only private workers consume the public good and pay taxes. As seen below, relaxation of this assumption has no effect on the results. In setting the level of the good as well as taxes, public workers play a Nash game across regions, taking account of the fact that their decisions affect the location choices of private workers.

Let z_i denote the public-good level in region i , and suppose that the good is a publicly produced private good with cost per unit normalized to unity. Per capita cost is then just z_i , being independent of the size of the private-worker population. This cost represents only the cost of nonlabor inputs, not including the wages of public-sector workers, which are a separate expense covered by rent extraction. Note that, with the size of the public work force fixed in

each region, an increase in z_i is achieved solely by raising non-labor inputs, whose costs are assumed to rise in proportion to z_i .

Let x_i denote consumption of the private good and a_i denote the consumption amenity level in region i . We assume that the preferences of private workers are quasi-linear and given by

$$x_i + a_i + v(z_i). \tag{1}$$

In (1), suitable measurement allows to the amenity to enter utility in linear fashion, just like x_i .¹⁰ Since public-sector workers do not consume the public good (an assumption relaxed below), their utility is instead equal to the amenity plus x consumption.

Let L_i denote the number of private-sector workers in region i . The economy's total number of private workers is fixed at \bar{L} , so that $L_1 + L_2 = \bar{L}$. Letting b_i denote the level of the production amenity in region i , private-sector output in the region is given by $f(L_i) + b_i L_i$, with the wage equal to $f'(L_i) + b_i$ ($f'' < 0$ holds). The production amenity thus affects productivity in an additive fashion.¹¹ Profit from private production is assumed to flow to agents outside the economy.

Let R_i denote public-sector rent extraction per private-sector worker. Since taxes per private-sector worker are then equal to $z_i + R_i$, the private-sector worker's budget constraint is $x_i + z_i + R_i = f'(L_i) + b_i$. Utility for a region-1 worker is then

$$f'(L_1) + b_1 - z_1 - R_1 + a_1 + v(z_1). \tag{2}$$

Since the amenity components enter additively in (2), they can be collapsed into a single term, denoted A , with $b_1 = \alpha A$ and $a_1 = (1 - \alpha)A$, where $0 \leq \alpha \leq 1$. A pure consumption amenity corresponds to $\alpha = 0$, while a pure production amenity corresponds to $\alpha = 1$.¹² A "composite" amenity has an intermediate value of α . Although most of the analysis is unaffected by the nature of the amenity, region 1's private-sector wage, which equals $f'(L_1) + \alpha A$, depends on its source.

Migration between the regions must equate utilities. Recalling that no amenity is present

in region 2, the equilibrium condition

$$f'(L_1) - z_1 - R_1 + A + v(z_1) = f'(\bar{L} - L_1) - z_2 - R_2 + v(z_2) \quad (3)$$

must hold. Condition (3) determines L_1 and thus the division of population as a function of the decision variables z_1 , R_1 , z_2 , and R_2 , as well as A . Holding the decisions variables constant, an increase in A will shift workers toward region 1, with L_1 rising. Although an increase in region 1's amenity thus entices workers to live there, holding the z 's and the R 's fixed, our interest lies in exploring how a stronger pull of the amenity, as reflected in a larger A , affects the *levels of these decision variables*, as chosen by rent-seeking public-sector workers.

Recognizing the dependence of L_1 on the decision variables, public workers in region i choose z_i and R_i to maximize their income, taking the other region's choices as given in Nash fashion. To characterize the solution to this problem, consider region 1's decisions and note that differentiation of (3) yields

$$\frac{\partial L_1}{\partial z_1} = \frac{1 - v'(z_1)}{f''(L_1) + f''(\bar{L} - L_1)} \quad (4)$$

$$\frac{\partial L_1}{\partial R_1} = \frac{1}{f''(L_1) + f''(\bar{L} - L_1)} < 0. \quad (5)$$

Greater rent extraction in region 1 naturally reduces its population, while the effect of z_1 depends on the sign of the numerator in (4), which determines whether the good is over or underprovided relative to the efficient level (an increase in z_1 raises L_1 when the good is underprovided, with $v' > 1$).

Total rent extraction by public workers in region 1 equals $L_1 R_1$. With the number of such workers fixed at M in each region, rent per public-sector worker (which corresponds to the public-sector wage) equals $L_1 R_1 / M$. Thus, maximizing the public-sector wage means maximizing $L_1 R_1$ by proper choice of z_1 and R_1 , viewing z_2 and R_2 as fixed. The first-order condition for z_1 is¹³

$$\frac{\partial L_1 R_1}{\partial z_1} = R_1 \frac{\partial L_1}{\partial z_1} = R_1 \frac{1 - v'(z_1)}{f''(L_1) + f''(\bar{L} - L_1)} = 0, \quad (6)$$

using (4). This condition reduces to $v'(z_1) = 1$, which implies that the public-good is chosen efficiently (with marginal benefit equal to the unitary marginal cost). With the public-good level set in socially optimal fashion, private-sector workers are encouraged to live in region 1, allowing more rent to be extracted by public-sector workers. Let z^* denote the optimal public-good level, which is independent of the level of amenities (an outcome that follows from quasi-linear utility).

The first order condition for R_1 is

$$\frac{\partial L_1 R_1}{\partial R_1} = L_1 + R_1 \frac{\partial L_1}{\partial R_1} = L_1 + \frac{R_1}{f''(L_1) + f''(\bar{L} - L_1)} = 0, \quad (7)$$

using (5). Rearranging (7) allows R_1 to be written in terms of L_1 :

$$R_1 = -L_1[f''(L_1) + f''(\bar{L} - L_1)]. \quad (8)$$

Public workers in region 2 maximize $(\bar{L} - L_1)R_2$ by choosing z_2 and R_2 , and analogous solutions emerge. The public-good level satisfies $v'(z_2) = 1$, thus equaling z^* , and R_2 is given by

$$R_2 = -(\bar{L} - L_1)[f''(L_1) + f''(\bar{L} - L_1)]. \quad (9)$$

The Nash-equilibrium level of L_1 can be found by using (8) and (9) to eliminate R_1 and R_2 in the migration condition (3). Making these substitutions yields

$$f'(L_1) + L_1[f''(L_1) + f''(\bar{L} - L_1)] + A = f'(\bar{L} - L_1) + (\bar{L} - L_1)[f''(L_1) + f''(\bar{L} - L_1)], \quad (10)$$

where the terms involving z^* cancel. This equation determines L_1 as a function of A .

2.2. The effect of amenities on public and private-sector wages

Using (10), the main questions of interest can be addressed: how do amenities affect public and private-sector wages? The first step is differentiate (10), which yields

$$\frac{\partial L_1}{\partial A} = -\{3f''(L_1) + 3f''(\bar{L} - L_1) + (2L_1 - \bar{L})[f'''(L_1) - f'''(\bar{L} - L_1)]\}^{-1}. \quad (11)$$

Despite the apparent ambiguity of the sign of (11) (a consequence of the presence of f'''), the expression can be signed using a stability condition for the equilibrium. However, the subsequent discussion is simpler when it relies on a local analysis around the symmetric outcome (where $A = 0$), in which case the sign of (11) is clear from inspection. With $A = 0$, $L_1 = \bar{L}/2$ holds and the last term in (11) drops out, so that

$$\frac{\partial L_1}{\partial A} = -\frac{1}{6f''(\bar{L}/2)} > 0. \quad (12)$$

Thus, region 1 (the high amenity region) has more private-sector workers than region 2. Note that the derivative in (11) gives the change in L_1 when a small amenity advantage is introduced in region 1, starting from a situation where neither region has amenities.

The effect of A on the private-sector wage is driven by a change in the marginal product of labor as a result of migration. In the case of a pure consumption amenity, which does not directly affect the marginal product, the private-sector wage in region 1 falls as in-migration depresses f' . But with a composite amenity, a direct productivity effect interacts with the migration effect, making the change in the marginal product ambiguous and dependent on the strength of the direct effect. Specifically, since the wage equals $f'(L_1) + \alpha A$, the effect of A is given by

$$f'' \frac{\partial L_1}{\partial A} + \alpha = f'' \left(-\frac{1}{6f''} \right) + \alpha = \alpha - \frac{1}{6}, \quad (13)$$

using (12). So while the private-sector wage falls with A in the case of a pure consumption amenity, where $\alpha = 0$, the wage rises with A in the case of a pure production amenity, where $\alpha = 1$ and (13) equals $5/6$. With a composite amenity, the wage falls only if the consumption component is large, with $\alpha < 1/6$.

Since region 2 loses workers, the private-sector wage rises there regardless of the nature of region 1's amenity. The wage derivative is equal to $f'' \partial L_2 / \partial A = -f'' \partial L_1 / \partial A = 1/6$, using (12).

To find the effect of amenities on the public-sector wage, (8) can be used to write

$$\frac{L_1 R_1}{M} = -\frac{L_1^2}{M} [f''(L_1) + f''(\bar{L} - L_1)]. \quad (14)$$

Differentiation then yields

$$\frac{\partial L_1 R_1 / M}{\partial A} = -\frac{1}{M} \{2L_1 [f''(L_1) + f''(\bar{L} - L_1)] + L_1^2 (f'''(L_1) - f'''(\bar{L} - L_1))\} \frac{\partial L_1}{\partial A}. \quad (15)$$

Evaluating (15) at the symmetric equilibrium using (12) yields

$$\frac{\partial L_1 R_1 / M}{\partial A} = -4(\bar{L}/2M) f''(\bar{L}/2) \frac{\partial L_1}{\partial A} = \frac{\bar{L}}{3M} > 0. \quad (16)$$

In addition, differentiating of $(\bar{L} - L_1)R_2$ yields

$$\frac{\partial (\bar{L} - L_1) R_2 / M}{\partial A} = -\frac{\bar{L}}{3M} < 0. \quad (17)$$

Therefore, regardless of whether the amenity affects consumption or production, total rent extraction, and thus the public-sector wage, is higher in region 1 than in region 2. With a stronger amenity tending to pull private-sector workers toward region 1, public-sector workers are thus able to extract more rent as A increases. Because L_1 is large for any given R_1 when A is large, public-sector workers enjoy a bigger population base for rent extraction, allowing them to better tolerate the population loss resulting from this behavior and thus to pursue it more aggressively.

Note that when the amenity has a consumption component, the increase in A yields also yields nonpecuniary amenity benefits to region 1's public-sector workers, compounding their gain from a higher wage. Since public-sector workers are immobile, however, no migration force works to offset these benefits (region 2's public-sector workers cannot relocate).

A key final question concerns how the public-sector wage gap between the high- and low-amenity regions compares to the private-sector gap. Since the public-sector wage rises (falls) at the same rate in region 1 (2) as A increases, the regional public-sector wage gap is proportional to twice the relevant derivative from (16), or $2\bar{L}/3M$. Since the private-sector wage changes at a rate equal to $\alpha - 1/6$ in region 1 while rising at a rate of $1/6$ in region 2, the regional

wage gap is proportional to $(\alpha - 1/6) - 1/6$, or $\alpha - 1/3$, which can take either sign. Thus, the regional public-sector wage gap exceeds the private-sector wage gap when

$$\frac{2\bar{L}}{3M} > \alpha - \frac{1}{3}. \quad (18)$$

When α is small, the right-hand side of (13) is negative, indicating that the private-sector wage is lower in region 1 than in region 2, an outcome that makes the regional gap negative and thus lower than the positive public-sector wage gap. But when $\alpha > 1/3$, the private-sector gap is positive, making the relationship between the public and private gaps not immediately clear. But since the right-hand side of (18) is less than 1, the inequality will be satisfied when $2\bar{L}/3M > 1$ or when $\bar{L} > (3/2)M = (3/4)(2M)$. The latter inequality states that the total private work force in both regions (\bar{L}) is larger than 3/4 of the total public work force, which equals $2M$.¹⁴ Since the private work force is in reality much larger than the public work force, this condition is realistic, and the regional public-sector wage gap exceeds the private-sector gap. This conclusion and (16) yield the main empirical hypotheses generated by the model:

Proposition 1. *Under the maintained assumptions, amenities raise the absolute level of public-sector wages while also raising these wages relative to private-sector wages. In other words, the public-sector wage gap between the high- and low-amenity regions is always positive, and it exceeds the private-sector wage gap, which can be either positive or negative depending on the nature of the amenity.*

In the case of a pure consumption amenity, the differential effect of the amenity on public and private-sector wages is transparent. The in-migration generated by an increase in the amenity depresses labor's marginal product and thus the private-sector wage, while the population gain is exploited by public-sector workers to raise total rent extraction and thus their individual wage. With a pure production amenity, the rise in the private-sector wage compounds the benefit from in-migration, expanding the scope of possible rent extraction and leading to a public-sector wage increase that exceeds the private increase.

Note that this latter outcome would be reversed if the public work force were much larger than the private-sector work force, so that (18) is not satisfied. With results of rent extraction needing to be shared across many public-sector workers, the increase in the individual wage

would then be smaller, making the public-sector wage gap between high and low-amenity regions less than the private-sector gap.

2.3. Adding housing consumption

The previous results are mostly unaffected under several modifications of the model. First, the assumption that public-sector workers do not consume the public good can be relaxed without affecting any of the previous results. The appendix demonstrates this conclusion by allowing the public good to enter the utility functions of both types of workers while requiring public-sector workers to pay taxes.

The analysis so far suppresses housing consumption and housing prices, which play a key role in Roback-style models. However, these elements can also be added to the current framework without substantially affecting any of the previous results, provided the addition is done in a certain way. Specifically, private-sector workers are assumed to consume land (interpreted as housing), while public workers are not consumers of land and firms do not require a land input, using only labor. Making the latter two groups of agents land-users would require major changes to the model, with uncertain effects on the results.

Let q_1 and q_2 denote individual land consumption by private workers in the two regions, and let the (additively separable) utility from housing consumption be $s(q_i)$. Letting p_1 denote the land price in region 1, the utility expression on the left-hand side of (3) is then augmented by the terms $s(q_1) - p_1 q_1$. Since the first-order condition for choice of q_1 is $s'(q_1) = p_1$, these new terms can be replaced by $s(q_1) - s'(q_1)q_1$. The analogous expression $s(q_2) - s'(q_2)q_2$ appears on the right-hand side of (3).

With two new unknowns, q_1 and q_2 , appearing in the model, additional equilibrium conditions are needed, and these conditions come from market-clearing requirements. Letting the residential land area in each region be fixed and normalized to one, the market-clearing conditions are $L_1 q_1 = 1$ and $L_2 q_2 = 1$. For region 1, q_1 is then given by $1/L_1$, so that the new terms on the left-hand side of (3) become

$$s(1/L_1) - s'(1/L_1)/L_1 \equiv h(L_1), \tag{19}$$

where $h'(L_1) = s''(1/L_1)L_1^{-3} < 0$. Let $g(L_1) \equiv f'(L_1)+h(L_1)$, with $g'(L_1) = f''(L_1)+h'(L_1) < 0$. Then, the equal-utility condition in (3) can be written as

$$g(L_1) - z_1 - R_1 + A + v(z_1) = g(\bar{L} - L_1) - z_2 - R_2 + v(z_2) \quad (20)$$

Since $g(\cdot)$ takes the place of $f'(\cdot)$, and since both functions are decreasing in L_1 , the analysis leading to the key derivatives (11) and (12) is unaffected, with g' replacing f'' in (12). In addition, the impact of the amenity on public-sector rent is unaffected, with (16) and (17) continuing to hold.

Although the calculation of A 's impact on the private-sector wage is altered, the previous conclusion on the effect of amenities on the wage gap is unchanged. With (12) using g' instead of f'' , the wage derivative is

$$f'' \frac{\partial L_1}{\partial A} + \alpha = f'' \left(-\frac{1}{6g'} \right) + \alpha = \alpha - \frac{\lambda}{6}, \quad (21)$$

where $\lambda = f''/g' = f''/(f'' + h') < 1$ (the functions in this expression are evaluated at $\bar{L}/2$). Thus, the private-sector wage once again rises with the amenity level unless the consumption component represents a large share of the total amenity effect (with $\alpha < \lambda/6$). The regional public-sector wage gap is again larger than the private-sector wage gap (which equals $\alpha - \lambda/3$), assuming that the previous condition on worker populations is satisfied.¹⁵ Proposition 1 thus continues to hold.

This modified model also generates predictions about land prices. Since $\partial L_1/\partial A > 0$ and $s'' < 0$, it follows that region 1's land price, given by $p_1 = s'(1/L_1)$ is increasing in A , with region 2's price decreasing in A . Thus, regardless of the nature of the amenity, land prices are higher in region 1 than in region 2. This prediction, as well as those above, might be modified in model that incorporates land consumption in a different fashion.¹⁶

A final point that is useful in the empirical work involves the comparison between the amenity's private-sector wage impact with and without housing consumption. As seen above, when housing consumption is absent, the regional wage gap is proportional to $\alpha - 1/3$. In the

presence of housing, the gap is $\alpha - \lambda/3$, a larger quantity given $\lambda < 1$. The reason for this relationship is that the increase in housing prices chokes off migration sooner in response to an amenity gap, keeping wages farther apart.

A key implication of these two formulas is that, if the amenity's consumption component is large (α is small), the regional wage gap could be positive in the presence of housing ($\alpha - \lambda/3 > 0$) but negative in housing's absence ($\alpha - 1/3 < 0$). Empirically, housing can be "removed" from the model by holding housing prices constant in a regression that compares wages in high- and low-amenity regions. The previous conclusion then says that, when the amenity has a large consumption component, the private-sector wage comparison could show a negative gap between high and low-amenity regions *controlling for housing-price gaps* while showing a positive gap when prices are not controlled for. Such a contrast would indicate that the amenity has an important consumption component along with its production effect.

2.4. Comparison to the Roback model

The present model differs from the standard Roback model in several ways. In addition to the presence of rent-seeking public-sector workers, firms in the model do not use land, in contrast to the standard assumption of a land input. Despite these differences, the predicted amenity effects on private-sector wages and house prices are identical to those in the Roback framework. In particular, the amenity lowers the private-sector wage in the consumption-amenity case and raises it in the production amenity case, with the effect ambiguous in the case of a composite amenity. In addition, regardless of the nature of the amenity, house prices are higher in the high-amenity region than in the low-amenity region.

The new implications of the model concern the public-sector wage. This wage is higher in the high-amenity region regardless of the nature of the amenity. In addition, under reasonable conditions on the relative size of the public and private sectors, and regardless of the nature of the amenity, the public-sector wage gap between high- and low-amenity regions is larger than the private-sector wage gap (which can be negative). These predictions are tested in the remainder of the paper.¹⁷

3. Data

The predictions of the model developed in the previous section are tested using data from the Current Population Survey (CPS) and other sources. The basic labor market data come from the Outgoing Rotation Group (ORG) files of the CPS, for the years 1994-2005. The beginning year is the first year after the redesign of the CPS, and we extend the data set only through 2005 because some of the other data items are measured in 2000 or earlier. We begin with the standard ingredients of wage equations, for a sample with the following restrictions: workers aged 18-64 earning wages or salaries (the self-employed and those working without pay are excluded). The full set of variables extracted from the CPS and used in the regressions is provided in the notes to the tables that follow. The dependent variable is the log of the hourly wage either reported by hourly workers or constructed for non-hourly workers. The straight wage is used, with some exclusions of obvious outliers.

A key characteristic of workers is their classification as either private or public. Within the public sector, we distinguish between state, local and federal workers, and most of our analyses focus on how amenities shift wage differentials for public-sector state and local workers. We also explore the determinants of public-sector wage differentials for unionized public-sector workers, based on union membership as reported in the CPS.

Some of our analyses also focus more narrowly on public-sector workers who are kindergarten, elementary, or secondary school teachers, or alternatively corrections officers, occupations that are highly concentrated in the public sector and constitute large shares of public-sector employment.¹⁸ These classifications were made as consistent as possible across years, given a change in occupational coding between 2002 and 2003.¹⁹ Moreover, the estimated wage regressions include year dummy variables, so that any effects of changes in the composition of the occupations that affect wage levels are accounted for in the analysis.

In addition to the labor market data, we define four amenity variables, indicating mild or dry weather, proximity to navigable water, and population density. *Mild* is the negative of the sum of the absolute values of the differences between monthly average temperature and 20 degrees Celsius, summed over January, April, July, and October. *Dry* is the negative of the average monthly precipitation for those four months, in centimeters. The *Mild* and *Dry*

variables are from Mendelsohn et al. (1994), and both are county-weighted state averages, using 2006 Census population estimates as weights. *Proximity* is the negative of the average distance from the state's county centroids, weighted by county population, to the nearest coast, Great Lake, or major river (Rappaport and Sachs, 2003). For each of these variables, a higher (less negative) value is "better," indicating less deviation from mild temperatures, less rain, and a shorter distance to navigable water. *Density* is the tract-weighted population density (per square mile) in the state, based on 1990 Census data (Glaeser and Kahn, 2004). Note that this variable differs from a simple density measure for a state because it is tract-weighted, with the goal of measuring density where people in a state live. As a result, the density measure is much higher than average tract density. Finally, we also make use of estimated state housing price premia. These price measures are computed from 2000 Census data (5 percent sample), as the state dummy variables in a hedonic regression for house prices. The computational method is the same as in Albouy (2009), although applied at the state level. Costs are based on both owned and rented homes and include utility costs, and the regression controls for rental and condominium status, dwelling size, rooms, acreage, commercial use, kitchen and plumbing facilities, and age of building.²⁰

Table 1 shows the distribution of the sample observations, which include 1.75 million private and public-sector workers. Almost 14 percent of the observations are for public state or local workers, with almost 3 percent being federal. Unionized workers represent nearly 16 percent of the sample, and unionized state and local workers about 7 percent of the sample.

Descriptive statistics for the amenity variables are shown in Table 2. Note that North Dakota's temperatures are the least mild, while Florida's are the mildest. Louisiana is the least dry state while Nevada is the driest. Tiny coastal Delaware has the best water access, while New Mexico is the state most remote from bodies of water. New York is the densest state, while Arkansas is the least dense.

4. Empirical Findings

The regression model takes the following form:

$$\ln(w_{is}) = \alpha + X_{is}\beta + \gamma PS_{is} + \sum_k \delta_k A_s^k + \sum_k \theta_k PS_{is} A_s^k + \epsilon_{is}, \quad (22)$$

where w_{is} is the wage for worker i in state s , X_{is} is a vector of characteristics for that worker, PS_{is} is a dummy variable indicating whether the individual works in the public sector, and A_s^k is the level of amenity k in state s , with $k = 1, 2, 3, 4$. The hypotheses to be tested are: $\theta_k > 0$, indicating that amenities raise public-sector wages relative to private-sector wages; and $\delta_k + \theta_k > 0$, indicating that amenities raise the absolute level of public sector-wages. Note that the sign of δ_k (indicating the effect of an amenity on private-sector wages) could be positive or negative depending on the nature of the amenity. The observations in (22) actually come from multiple years, but this fact is suppressed for simplicity in writing the equation since the main variables of interest (amenities) are time invariant. A complete equation would thus include time indices and year fixed effects.

4.1. Benchmark regressions lacking a public-private distinction

As a benchmark, the first empirical specification (shown in Table 3) suppresses the distinction between private and public-sector workers, regressing the log of the wage on the amenity variables along with the large set of non-amenity controls (worker characteristics, and year fixed effects), whose coefficients are not reported. The first four columns show regressions containing just a single amenity measure, while the regression in column 5 contains all four measures. When included singly, *Dry* and *Proximity* have significantly positive coefficients, while *Proximity* and *Density*'s coefficients are insignificant. When all four variables appear together, *Mild*'s coefficient remains insignificant while the remaining amenity coefficients are all significantly positive.

With the public-worker share in the sample being small, the results in Table 3 are presumably driven mainly by the private-worker observations. Since the analysis in section 2 shows that a positive private-sector wage effect requires an amenity to have a production component, the positive coefficients for *Dry*, *Proximity* and *Density* evidently indicate that each of these

amenities increases worker productivity in the private sector. Given the substantial evidence on agglomeration economies (see Rosenthal and Strange, 2004), the positive wage effect of density comes as no surprise. Less expected are the implied productivity benefits of a dry climate and water access.

As explained in section 2.3, if housing prices are held constant, then the wage impact of the amenity's production component is attenuated, providing a better chance for the negative influence of the consumption component to manifest itself. To investigate this possibility, column 6 of Table 3 adds the state housing-price premium for 2000 to the regression. The housing-price coefficient is itself positive and significant, indicating that wages are higher in states with expensive housing. With housing prices included, the coefficients of *Dry* and *Proximity* lose significance (the point estimates are negative), while the coefficients of *Mild* and *Density* become significantly negative. These negative relationships, as well as the sign changes for the insignificant coefficients, are what we would expect if each amenity has an important consumption component (with high density being favorable). Therefore, the results suggest that the four amenity variables contain both production and consumption components, with the production effect tending to dominate (yielding the positive coefficients in column 5).

The theoretical analysis showed that, regardless of the nature of the amenity, house prices should be higher in high- than in low-amenity regions. Table 4 tests this prediction by regressing the state housing-price premium on the amenity variables. As can be seen in column 5, all the amenity coefficients are significantly positive, as predicted.

Before turning to the regressions that distinguish between private and public-sector workers, it is useful to sketch the connection between the results presented so far and the standard empirical implementation of the Roback (1982) model, as seen in Blomquist, Berger and Hoehn (1988). In the standard implementation, wage and house-price regressions like those in column (5) of Tables 3 and 4 are estimated, and the results are then merged to generate estimates of amenity consumption benefits, following guidance from the theory. For positive wage impacts like those in column (5) of Table 3 to emerge, amenity production effects must dominate consumption effects, just as in the present framework.

The previous literature also contains an analog to the regression in column 6 of Table 3. In

particular, Henderson (1982) shows theoretically that if a house-price measure is included as a covariate in a Roback-style wage regression, then the resulting amenity coefficients directly measure the consumption benefits of amenities. He carries out such an estimation, generating plausible numerical values. By contrast, under the present model, a regression that controls for house prices does not yield a direct measure of consumption benefits. But the regression gives these benefits a better chance to show their existence by generating negative wage coefficients, as explained in section 2.3.

4.2. *Main results*

To test the main prediction of the model, as embodied in Proposition 1, public and private-sector workers must be distinguished. Accordingly, the regressions in columns 1-6 of Table 5 include a dummy variable identifying public state or local workers, and they also include interactions of this variable with the amenity measures. Note that the dummy coefficient reveals the difference in the *levels* of public and private-sector wages, while the interactions show the difference in the *wage impact of amenities* between public and private-sector workers.

Before considering these results, it should be noted that we face a limitation in estimating the effects of amenities on wages. Because these amenities are time-invariant, we cannot distinguish between actual effects of the amenities on wages and correlations between these amenities and other unmeasured state-specific factors that affect wages. However, in our main analyses described in this section, we are interested in the interactions between these amenities and public-sector employment. Thus, even if unmeasured state-specific factors influence wages, as long as they do not affect the difference between wages for otherwise similar private- and public-sector workers, these factors will not affect our results. Put equivalently, we can identify how local amenities affect public-sector wage differentials in the face of unmeasured state-specific influences on overall wage levels, even if we cannot identify the main effects of amenities.²¹ Nonetheless, in some of the specifications reported below, we control for other state-specific factors, including some that may affect the public-sector wage differentials that we estimate.

The (uninteracted) amenity level coefficients in Table 5, which show the amenity impact on private-sector wages, follow the same pattern as in Table 3, being significantly positive for

Dry, *Proximity* and *Density* in the regression in column 5 containing all the amenities. In addition, the public-sector wage dummy is negative and significant, indicating that wages for state or local public workers are about 5 percent less than private-sector wages, conditional on all the covariates.

Turning to the interaction coefficients, the *Proximity* and *Density* coefficients are significantly positive in the single-amenity regressions (columns 1-4), and both these coefficients as well as the *Mild* interaction coefficient are significantly positive in the regression in column 5 containing all of the amenities. The null hypothesis that all the interaction coefficients are zero can also be rejected at a high confidence level. These results provide strong confirmation of the model's predictions by showing that public-sector wages rise even more than private-sector wages in the presence of amenities. Note also that, with both the amenity level and interaction coefficients being positive, the results also indicate that public-sector wages are high in absolute terms in high-amenity regions, matching the model's prediction. The bottom panel of Table 5 shows the sum of the level and interaction coefficients, with three out of four being significantly positive.

As seen in column 6, controlling for housing prices once again reverses the signs of the amenity impacts on private-sector wages, with all four point estimates negative and the *Mild* and *Density* coefficients significant. However, the interaction coefficients remain positive, again indicating that amenities raise public wages relative to private-sector wages when housing prices are held constant. Since the theory predicts that public-sector wages should rise in an absolute sense with amenities regardless of whether housing is present in the model, the sum of the amenity level and interaction coefficients should then be positive regardless of whether or not the regression controls for house prices. The bottom panel shows that this condition is met for *Proximity* and *Density*, for which the summed coefficients are significantly positive.

Column 7 drops nonunionized public-sector workers from the sample, so that comparisons are between unionized state or local public workers and private-sector workers (the sample size falls to 1.6 million). The results are qualitatively similar to those in column (5). The amenity level coefficients have the same pattern of signs and significance, while three of the interaction coefficients are again positive and significant (*Mild* and *Dry* swap significance). Note that the

public-sector wage discount grows to 7 percent, evidently indicating that unionized workers are in lower-paying public job categories. Column 8 shows that controlling for housing prices leads to results very similar to those in column 6. Most important, perhaps, is the finding that the estimated public-sector wage premiums associated with amenities are larger for three out of the four amenities (and triple in size for *Dry* and *Proximity*), consistent with unions being able to extract more rents. If the comparison is instead between nonunionized public-sector workers and private workers, the wage premiums associated with amenities are smaller than those reported in columns 5 and 6 (but still always positive, and significant for all of the amenities except *Dry* in the specification with the housing-price premium included; results available on request).

We next explore the robustness or sensitivity of these results along a number of dimensions. First, it is possible that public-sector workers differ from other workers in observable characteristics, and that it is these other characteristics that—for some reason—are associated with wage differentials that vary with amenities. To address this question, Table 6 reports estimates for various subsets of the sample, including urban vs. non-urban residents, more- and less-educated workers, and workers in different race or ethnic groups. The estimates are reported for the specification from column (8) of Table 5, focusing on the unionized public-sector workers for whom the theoretical prediction as well as the evidence is stronger. As the table shows, the results are largely unchanged within each of these subgroups, although not surprisingly, the statistical significance of the estimates is sometimes a bit weaker.²²

What do these estimates imply for actual public-sector vs. private-sector wage differentials? To provide some idea of what the magnitudes mean, consider (from Table 2) the implied difference in the public-sector wage differential for workers in the worst state compared to the best state for each amenity. For example, for *Mild*, the implied effect of being located in Florida instead of North Dakota is the difference in the amenity values in Table 2 multiplied by the corresponding public-sector/amenity interaction coefficient of 0.0012, or a log differential of 0.055 (or approximately 5.5 percent). For *Dry*, *Proximity*, and *Density*, the corresponding magnitudes for the difference between the worst and best states are 2.5, 10.2, and 2.9 percent. Effects of these magnitudes are non-negligible and plausible.²³

In Table 7, public-sector workers are limited to those employed at the state level, excluding local public workers. For local public-sector workers, the ability to extract rents may be weaker in smaller localities (Rose and Sonstelie, 2010), or the statewide amenity measures may not capture local amenities well. On the other hand, the local public-sector workers in large cities, who make up a large share of the public-sector workforce in the state, may be among the public-sector workers most able to extract rents. The results excluding these local workers, however, are very similar to those in Table 5. The amenity level and interaction coefficients are typically positive and significant in columns 5 and 7, a conclusion that also applies to the sum of the coefficients. Several amenity-level coefficient signs switch to negative in columns 6 and 8 when housing prices are included, with interaction coefficients remaining positive. As in Table 5, for three out of the four amenities, the associated public-sector wage premiums are usually larger when we focus exclusively on public-sector workers who are unionized (and weaker, although not reported in the table, when the focus is on nonunionized public-sector workers).

4.3. Results for teachers and corrections officers

It is useful to test the model's predictions on even narrower classes of public-sector workers, specifically teachers and corrections officers. Table 8 shows distributional information for elementary and secondary school teachers. Three quarters of such teachers are public workers, with the rest being privately employed. Almost 10 percent of teachers self-report that they are state-employed,²⁴ while about half of all teachers are union members, regardless of sector.

Table 9 shows the previous regression specifications with public-sector workers limited to state and local teachers. Only specifications with all of the amenity variables are reported. In column 1, three amenity level coefficients are positive, again indicating higher private-sector wages in high-amenity states. The teacher dummy coefficient shows that teachers earn 18 percent less than otherwise comparable nonteachers, while the coefficient for public workers (all of whom are teachers) shows that these individuals earn 10 percent more than other teachers. As in Table 5, three out of four amenity interaction coefficients are positive (*Dry's* effect is insignificant), showing that amenities raise public teacher salaries more than those of private-sector workers. In two cases, the sum of the amenity level and interaction coefficients

is significantly positive, indicating higher absolute teacher wages in high-amenity states.

From column 2, the addition of the housing-price premium yields results that match previous findings, with all the amenity level coefficients turning negative (two are significant), while the interaction terms retain their previous positive sign and significance. Column 3 adds the student-teacher ratio interacted with the public-teacher dummy variable in order to control for the quality of the work environment, which may be related to public-sector wage differentials, either because the work environment affects wages or because the higher wages lead to a higher student-teacher ratio.²⁵ Note that the inclusion of this variable interacted with public-sector employment addresses the issue raised earlier regarding other sources of state-level variation in public-sector wage differentials. In this case, for example, student-teacher ratios may vary across states, and this variation, in turn, may be related to the wage premium for public-school teachers for reasons unrelated to local amenities. The interaction coefficient is insignificant, indicating no relationship between public-sector wage differentials (for teachers) and student-teacher ratios, and its inclusion has no effect on the main results regarding the public-sector/amenity interactions. Columns 4-6 of Table 9 restrict public-sector teachers to those that are unionized, and the results are largely unaffected.

Turning to the case of corrections officers, Table 10 gives distributional information. Among corrections officers (who staff prisons and jails), 95 percent are state or local employees, and more than half are union members. Table 11 shows regressions where state and local employees are limited to corrections officers, and the results closely match previous patterns, despite the much smaller number of public-sector workers for whom the results are identified. From column 1, corrections officers earn 10 percent more than otherwise comparable workers, while if they are public state or local employees, that premium is reduced to about 3 percent. The positive amenity level coefficients again show that amenities raise private-sector wages, while the positive interaction coefficients (three of which are again significant) indicate that the wages of corrections officers rise by more than those of private workers in the presence of amenities. The sum of the two coefficients is also significantly positive in three out of four cases.

Adding the housing-price premium generates now-familiar changes in the amenity impacts on private-sector wages, as shown in column 2. Column 3 includes a work-environment mea-

sure, equal to inmates per officer, interacted with the corrections-officer dummy. This measure controls for a potential source of across-state variation in public-sector wage differentials for this particular set of public-sector workers. Its impact (along with that of a level effect) is insignificant, and its inclusion does not affect the other results. Columns 4-6 restrict attention to unionized corrections officers, and the results are mostly unchanged, although the effects of amenities on the public-sector wage premium are generally stronger.

Finally, the regressions in Table 12 provide a falsification test by using federal rather than state or local workers to represent public-sector employees. With federal wages mostly uniform across the country,²⁶ or in some cases reflecting local private-sector pay, public-sector wage differentials in federal employment should not show the same positive relationship to state amenities as the differentials for state and local workers. This prediction is confirmed by the results in column 1, where we never find a positive public-sector/amenity interaction coefficient.²⁷ Restricting attention to unionized federal workers (column 2) has little effect on the results.²⁸

5. Conclusion

Non-competitive influences on public-sector pay have been long debated. On the one hand, the lack of a competitive market, the presence and continuing strength of public-sector labor unions, and the high level of political involvement of these unions all suggest that public-sector workers—particularly when unionized—can influence their pay and employment. On the other hand, public-sector pay (and employment) decisions are not made in a vacuum, as taxpayers can migrate away from locations in which public-sector goods and services are provided in an excessively costly fashion.

The presence of local amenities, however, can grant public-sector workers a form of monopoly power that lets them extract more rents. People can only consume the beaches and sunshine of southern California, or benefit from the higher productivity of dense urban areas like Manhattan, by living nearby, and public-sector workers can therefore extract rents up to the point where those who pay the rents are induced to leave these high-amenity areas.

The data bear out this connection between amenities and rent-seeking behavior. When we

estimate standard log wage regressions, we find that public-sector wage differentials are in fact larger in the presence of strong amenities, as are the absolute levels of public-sector wages. The results are the same whether we look at state and local workers overall or just state workers, and when we look at important subsets of these workers who receive a lot of attention in the debate over public-sector pay—teachers and prison guards. Furthermore, the relationship between public-sector wage differentials and amenities is stronger for unionized public-sector workers, consistent with their greater ability to extract rents through both organization and influence over the political process. The data also pass a falsification test, given that we find no evidence of a connection between wage differentials for federal workers and these same amenities.

Despite our compelling evidence, the paper by no means offers a “complete” theory of public-sector wage determination. Surely, institutional factors such as the cross-state variation in labor laws studied by Freeman and Valetta (1988) matter, as does the productivity of public-sector workers and the level of alternative wages they can earn in the private sector. Developing a fuller understanding of these various influences on public-sector wages can clarify the policy debate on public-sector pay, and may prove useful in considering possible reforms to reduce rent extraction by public-sector workers.

Finally, our empirical analysis is limited to state-level variation in local amenities and public-sector wage differentials. Although it may be hard to define the scope of local markets, richer data on local amenities and these wage differentials would permit additional tests of our hypothesis. In addition, the same considerations regarding rent extraction may apply to other workers who are not necessarily concentrated in the public sector but for whom pay is strongly influenced by government regulations, political power (in part through unionization), and other non-competitive forces. Finally, in principle our analysis can be applied to differences in fringe benefits between the private and public sector, and studying the connection between benefits and amenities may be particularly informative in light of recent concerns over public-sector pensions.

Appendix

Adding public-worker z consumption

The preceding results are unaffected when public-sector workers consume the public good along with private-sector workers. Suppose that, instead of caring only about x , public workers value the public good and pay the same tax as private workers. This tax equals $z_i + R_i$, so that public workers are paying to cover their own rent extraction (R_i now denotes rent extraction per worker, public and private). Their income equals $w + (L_i + M)R_i/M$, where w is some fixed base wage, and where the second term is rent per public worker (of which there are M in each jurisdiction). This term equals the rent component of the tax (R_i) times the total number of workers paying the tax ($L_i + M$), divided by the number of public workers.

A public worker's budget constraint is then $x_i = w + (L_i + M)R_i/M - z_i - R_i = w + L_i R_i/M - z_i$. Note that the portion of the tax covering rent extraction cancels the corresponding part of income, so that rent extraction continues to yield $L_i R_i/M$ per public worker. Assuming that public-sector workers share private-worker preferences, the public-sector workers in region 1 seek to maximize

$$w + L_1 R_1/M - z_1 + v(z_1) \tag{a1}$$

subject to the migration constraint in (3). The choice variables are z_1 , R_1 , and L_1 , with z_2 and R_2 viewed as fixed.

Letting μ denote the multiplier associated with the constraint, the first-order condition for choice of z_1 is $(1 + \mu)[v'(z_1) - 1] = 0$. Therefore, the condition $v'(z_1) = 1$ again emerges, so that $z_1 = z^*$. But with z_1 fixed at this value, the remainder of the optimization problem is to maximize $L_1 R_1/M$ subject to (3). But since this problem has already been solved via the previous analysis, the previous conclusions are unaffected.

References

- ALBOUY, D., 2009. What are cities worth? Land rents, local productivity, and the capitalization of amenity values. NBER Working Paper, #14981.
- BEESON, P.E., 1991. Amenities and regional differences in returns to worker characteristics. *Journal of Urban Economics* 30, 224-241.
- BEESON, P.E., EBERTS, R.W., 1989. Identifying productivity and amenity effects in interurban wage differentials. *Review of Economics and Statistics* 71, 443-452.
- BIGGS, A.G., 2010a. Are government workers underpaid? No. *The American*. Washington, D.C.: The American. American Enterprise Institute. Available at http://www.nytimes.com/2010/10/12/opinion/12brooks.html?_r=2&src=tptw (viewed December 15, 2010).
- BIGGS, A.G., 2010b. The market value of public-sector pension deficits. *Retirement Policy Outlook*. Washington, D.C.: American Enterprise Institute. Available at <http://www.aei.org/docLib/2010RPOno1g.pdf> (viewed December 15, 2010).
- BORJAS, G.J., 2002. The wage structure and the sorting of workers into the public sector. NBER Working Paper No. 9313.
- BLOMQUIST, G., BERGER, M., HOEHN, J., 1988. New estimates of quality of life in urban areas. *American Economic Review* 78, 89-107.
- DISALVO, D., 2010. The trouble with public sector unions. *National Affairs* 5 (Fall), 3-19. Available at http://www.nationalaffairs.com/doclib/20100918_DiSalvo_pdf%5B1%5D.pdf (viewed December 16, 2010).
- EDWARDS, J., KEEN, M., 1996. Tax competition and Leviathan. *European Economic Review* 40, 113-134.
- FREEMAN, R.B., 1986. Unionism comes to the public sector. *Journal of Economic Literature* 24 (1), 41-86.
- FREEMAN, R.B., VALLETTA, R., 1988. The effects of public sector laws on labor market institutions and outcomes. In R.B. Freeman and C. Ichniowski, eds., *When Public Sector Workers Unionize*. Chicago: University of Chicago Press.
- GABRIEL, S.A., ROSENTHAL, S.S., 2004. Quality of the business environment versus quality of life: Do firms and households like the same cities? *Review of Economics and Statistics* 86, 538-444.

- GLAESER, E.L., KAHN, M.E., 2004. Sprawl and urban growth. In J.V. Henderson and J.-F. Thisse, eds., *Handbook of Regional and Urban Economics*, Vol. 4. Amsterdam: Elsevier.
- GYOURKO, J., TRACY, J., 1989. The importance of local fiscal conditions in analyzing local labor markets. *Journal of Political Economy* 97, 1208-1231.
- GYOURKO, J., KAHN, M., TRACY, J., 1999. Quality of life and environmental comparisons. In E. Mills and P. Cheshire, eds., *Handbook of Regional and Urban Economics*, Vol. 3. Amsterdam: North Holland.
- HENDERSON, J.V., 1982. Evaluating consumer amenities and interregional welfare differences. *Journal of Urban Economics* 11, 32-59.
- MENDELSON, R., NORDHAUS, W.D., SHAW, D., 1994. The impact of global warming on agriculture: A Ricardian analysis. *American Economic Review* 84, 753-751.
- O'BRIEN, K.M., 1992. Compensation, employment, and the political activity of public employee unions. *Journal of Labor Research* 13, 189-203.
- RAPPAPORT, J., SACHS, J., 2003. The United States as a coastal nation. *Journal of Economic Growth* 8, 5-46.
- ROBACK, J., 1982. Wages, rents, and the quality of life. *Journal of Political Economy* 90, 1257-1278.
- ROSE, H., SONSTELIE, J., 2010. School board politics, school district size, and the bargaining power of teachers unions. *Journal of Urban Economics* 67, 438-50.
- ROSENTHAL, S.S., STRANGE, W.C., 2004. Evidence on the nature and sources of agglomeration economies. In J.V. Henderson and J.-F. Thisse, eds., *Handbook of Regional and Urban Economics*, Vol. 4. Amsterdam: North Holland.
- SCHMITT, J., 2010. *The Wage Penalty for State and Local Government Employees*. Washington, D.C.: Center for Economic and Policy Research.
- STEPHAN, J., 2005. *Census of State Correctional Facilities*. Washington, D.C.: U.S. Department of Transportation, Office of Justice Programs.
- VISSER, J., 2006. Union membership statistics in 24 countries. *Monthly Labor Review* 129, 38-49.
- WILSON, J.D., 1999. Theories of tax competition. *National Tax Journal* 52, 269-304.
- ZAX, J., ICHNIOWSKI, C., 1988. The effects of public sector unionism on pay, employment,

department budgets, and municipal expenditures. In R.B. Freeman and C. Ichniowski, eds., *When Public Sector Workers Unionize*. Chicago: University of Chicago Press.

Footnotes

*We thank Rainald Borck, Kitt Carpenter, and Albert Solé Ollé for helpful comments.

¹See, for example, <http://reason.org/studies/show/public-sector-private-sector-salary>, and <http://www.prisoncensorship.info/archive/etext/agitation/prisons/campaigns/ca/caprisoncra.html> (all viewed December 15, 2010).

²See, for example, <http://www.post-gazette.com/pg/10164/1064943-373.stm> and http://blog.nj.com/njv_editorial_page/2010/02/post_7.html (both viewed December 15, 2010).

³See, for example, <http://www.northshoreoflongisland.com/Blog-31542.112114-6239.112114-Yes-School-Administrators-and-Teachers-are-Vastly-Overpaid.html>, <http://politics.usnews.com/opinion/mzuckerman/articles/2010/09/10/public-sector-workers-are-the-new-privileged-elite-class.html>, and http://www.nytimes.com/2010/10/12/opinion/12brooks.html?_r=2&src=tptw (all viewed December 15, 2010)

⁴Similar figures are reported for 2009 in Schmitt (2010).

⁵See, for example, http://www.city-journal.org/2010/20_2_california-unions.html (viewed December 15, 2010).

⁶The data are explained in more detail in the notes to the figure, and later in the paper.

⁷For additional studies, see Albouy (2009), Beeson (1991), Beeson and Eberts (1989), Gabriel and Rosenthal (2004), Gyourko and Tracy (1989), Gyourko, Kahn and Tracy (1999) and Henderson (1982).

⁸Since public-sector workers exploit the mobility of private-sector workers in the process of rent-seeking, making them mobile as well is theoretically impractical. Presumably, however, job stability in the public sector leads to much lower interregional mobility for these workers than for private-sector workers, making our assumption not unrealistic.

⁹Since the number of public-sector workers is fixed in the model, the empirical analysis focuses only on public-sector wages and not on employment levels. Putting the model aside, there is no standard empirical approach that one could adapt for identifying differences in public-

sector employment across states associated with rent-seeking.

¹⁰If the amenity were instead g_i and its contribution to quasi-linear utility equal to $t(g_i)$, a redefinition that sets $a_i = t(g_i)$ would yield (1).

¹¹The marginal product could instead depend on a nonlinear function of the amenity, but suitable redefinition would yield the linear additive relationship (see footnote 10). On another issue, note that the production amenity could reduce costs rather than increase worker productivity. For example, suppose that heating and cooling cost per worker is given by a function $t(h_i)$, where h_i is a measure of climate unpleasantness. Then, with this cost subtracted off from the marginal product in measuring the worker's contribution, the wage would equal $f'(L_i) - t(h_i)$. This expression can be written as $f'(L_i) + b_i$ by suitable redefinition of the climate amenity, matching the productivity formulation.

¹²This formulation assumes that the consumption and production amenities are positively correlated, with an increase in A generating both consumption and production benefits. The less natural case where a region's features yield consumption benefits but reduce worker productivity can be handled by a reformulation of the model. To capture this case, α would be negative, so that $b_i = \alpha A$ is negative while $a_i = (1 - \alpha)A$ remains positive.

¹³It can be shown that the second-order conditions for the maximization problem are satisfied.

¹⁴Since the right-hand side of (18) is less than $2/3$, the weaker condition $\bar{L} > M = (1/2)(2M)$ (indicating that \bar{L} exceeds half of the total public-sector work force) actually suffices. The stronger form of the sufficiency condition is needed, however, when housing consumption is added to the model, as seen below.

¹⁵The private-sector wage increase in region 1 is now proportional to $-f''\partial L_1/\partial A + \alpha = -f''/6g' + \alpha = \alpha - \lambda/6$. As a result, the regional wage difference is proportional to $(\alpha - \lambda/6) - \lambda/6 = \alpha - \lambda/3$. Since this expression is less than unity, the rent-per-worker difference will exceed it when $2\bar{L}/3M > 1$, as before.

¹⁶If public workers were also to consume land, then a change in rent extraction would affect their utility via the impact of L_1 on the $h(L_1)$ term, which would be added to (20). This additional consideration would require a new version of the above analysis, possibly changing some of the results. In addition, to bring the model fully in line with the Roback tradition, firms would also be users of land. In this case, the market-clearing conditions would include this land usage, and a zero-profit condition would be added for each region. These extra conditions would be needed to determine the quantities of land used in production.

¹⁷Another testable prediction of the model is that taxes rise with a region’s amenity level in order to support higher rent extraction. However, a credible test of this prediction would need to hold public-good levels constant since the model’s prediction of a uniform z level across regions is not realistic. This difficulty, combined with the fact that the test would only rely on a simple cross section at the state level, limits the appeal of such an exercise. In contrast, for our analysis of wages, we study the difference between public-sector and private-sector wage differentials associated with amenities, and—as discussed below—the private-sector wage differentials capture state-level differences that may be correlated with amenities.

¹⁸Elementary and secondary school teachers are by far the largest occupation in local government, and elementary and secondary school teachers and “bailiffs, correctional officers, and jailers” (all of which we group under “corrections officers”) are the second and third largest occupations in state employment (after post-secondary teachers); see Schmitt (2010). We also focus on corrections officers and elementary and secondary school teachers because their pay is often prominent in public debate.

¹⁹Elementary and secondary school teachers are defined based on the following Census of Population occupational codes: for 2002 and earlier (1990 Census codes), teachers in kindergarten or pre-kindergarten (155), elementary school (156), secondary school (157), or special education (158); and for 2003 and after (2002 Census codes), preschool and kindergarten teachers (2300), elementary and middle school teachers (2310), secondary school teachers (2320), and special education teachers (2330). Correction officers are defined using the same Census codes as follows: for 2002 and earlier (1990 Census codes), sheriffs, bailiffs, and other law enforcement officers (423), and correctional institution officers (424); for 2003 and after (2002 Census codes), first-line supervisors/managers of correctional officers (3700), and bailiffs, correctional officers, and jailers (3800). Inspection of the share of the workforce in these two occupation groups as defined indicated that the definitions were consistent across the change in the data between 2002 and 2003.

²⁰We thank Jed Kolko for supplying us with these estimates.

²¹Another way to see this point is to note that the public-sector/amenity interactions are still identified if we include fixed state effects in the regressions.

²²Note that the table reports results for specifications including the housing-price premium, in which case the main effects of the amenities are more reflective of consumption amenities. In some cases (most notably, perhaps, for workers with a Bachelor’s degree), the estimated main effects of the amenities do not replicate the negative estimates found for the full sample. However, in specifications excluding the housing-price premium, the estimated coefficients of the main effects for most of the amenities were consistently positive, as in Table 5, suggesting that the value of these amenities on the consumption side may vary across different types of workers. Regardless, the estimated public-sector/amenity interactions were very similar

when the housing-price premium was excluded. Also, we noted in the previous footnote that the public-sector/amenity interactions are still identified if we include fixed state effects (although the main effects of the amenities on public-sector pay are not identified). We verified that the results for the public-sector/amenity interactions were nearly the same, as were the statistical conclusions, when we included fixed state effects.

²³These are the differences in the public-sector vs. private-sector wage differential. The overall wage difference for public-sector workers between two states would be this difference plus the main effect of the amenity, which would be computed by applying the amenity difference to the estimates in the last four rows of Table 5. Thus, for *Proximity*, the implied differential would be 7.7 percent—less than the 10.2 percent figure because the main effect of this amenity (in the regression controlling for housing prices) is negative.

²⁴Our understanding is that most teachers (except some in prisons and some special needs teachers) are local-government employees. However, given the heavy involvement of state government with education, many teachers may report themselves as state employees.

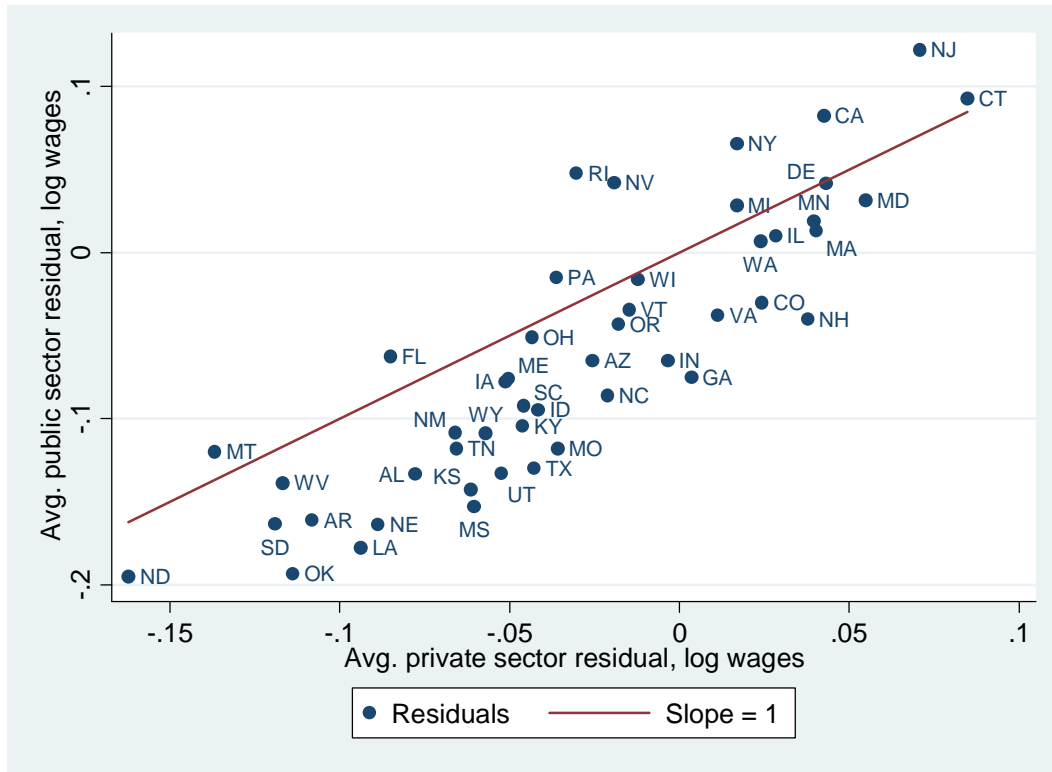
²⁵In the latter case, we are not addressing the potential endogeneity of student-teacher ratios, and the results must just be interpreted as asking whether the partial correlations between public-sector wage differentials and amenities remain the same when the student-teacher ratio is partialled out.

²⁶See <http://www.opm.gov/oca/09tables/locdef.asp> (viewed December 30, 2010).

²⁷The negative point estimates could indicate that federal pay differentials do not fully reflect private differentials.

²⁸In Table 12, the house price premia are excluded. Their inclusion has no effect on the results.

Figure 1: Plot of Public Sector vs. Private Sector Wage Differentials by State



Notes: Plotted points are state averages of residuals from separate log wage regressions estimated for state or local public-sector workers and private-sector workers. Estimates are weighted, and include controls for education (16 categories), age and its square, union membership, sex, race, Hispanic ethnicity, marital status (7 categories), residence in a metro area, and year dummy variables.

Source: CPS ORG files, 1994-2005.

Table 1: Descriptive Statistics on Distribution of Workers by Sector and Union Membership

Public state or local	0.136
Public state only	0.042
Public federal	0.026
Union member	0.156
Union member and public state or local	0.065
Union member and public state only	0.015
Union member and public federal	0.010

Notes: The sample size is 1,746,644, covering the 48 continental states. Estimates are weighted.

Source: CPS ORG files, 1994-2005.

Table 2: Descriptive Statistics on Amenities by State

	Mean	Std. dev.	Min. (state)	5 worst states	Max. (state)	5 best states
Mild	-40.1	11.4	-62.7 (ND)	ND,MN,SD,ME,VT	-17.1 (FL)	FL,LA,CA,TX,MS
Dry	-7.5	2.9	-12.1 (LA)	LA,MS,WA,AL,GA	-1.7 (NV)	NV,AZ,NM,WY,ID
Proximity (1,000s)	-0.190	0.241	-0.96 (NM)	NM,UT,WY,CO,MT	-0.010 (DE)	DE,RI,NJ,NY,FL
Density (10,000s)	0.322	0.403	0.075 (AR)	AR,MS,WV,SD,VT	2.74 (NY)	NY,CA,NJ,IL,MA

Notes and sources: The data cover the 48 continental states. Definitions of variables (and sources) are as follows. “Mild” is the negative of the sum of the absolute values of the difference between monthly average temperature and 20 degrees Celsius, summed over January, April, July, and October. “Dry” is the negative of the average monthly precipitation for those four months, in centimeters. Both are county-weighted state averages, using 2006 Census population estimates to weight. “Proximity” is the negative of the average distance from the state’s county centroids, weighted by county population, to the nearest coast, Great Lake, or major river. “Density” is the tract-weighted population density (per square mile) in the state, based on 1990 Census data (Glaeser and Kahn, 2004). Note that this is different from a simple density measure for a state, because it is tract-weighted. The idea is to measure density where people in a state live. As a result, this density measure is much higher than average density measures. For the 5 worst (best) states, the states are listed in increasing (decreasing) order.

Table 3: Standard Wage Regressions Incorporating Amenity Variables

	(1)	(2)	(3)	(4)	(5)	(6)
Mild	0.0002 (0.0012)				-0.0002 (0.0005)	-0.0013 (0.0004) ^{***}
Dry		0.010 (0.003) ^{***}			0.012 (0.002) ^{***}	-0.0004 (0.002)
Proximity			0.109 (0.063) [*]		0.138 (0.039) ^{***}	-0.006 (0.025)
Density				0.019 (0.013)	0.012 (0.006) ^{**}	-0.015 (0.004) ^{***}
State housing price premium (\$1,000s)						0.023 (0.003) ^{***}

Notes: The sample size is 1,746,644. Estimates are weighted. See notes to Table 4 for definition of state housing price premia. The regressions include controls for education (16 categories), age and its square, union membership, public state or local employment, sex, race, Hispanic ethnicity, marital status (7 categories), residence in a metro area, and year dummy variables. Standard errors are clustered at the state level, and are reported in parentheses. ^{***}, ^{**}, and ^{*} indicates that the estimate is statistically significant at the 1-, 5-, or 10-percent level, based on a *t*-distribution with degrees of freedom equal to the number of states (clusters) minus one.

Source: CPS ORG files, 1994-2005.

Table 4: Regressions of State Housing Price Premium (\$1,000s) on Amenity Variables

	(1)	(2)	(3)	(4)	(5)
Mild	0.028 (0.025)				0.038 (0.018)**
Dry		0.297 (0.109)***			0.382 (0.096)***
Proximity			2.330 (1.839)		3.694 (1.577)**
Density				1.750 (0.402)***	1.533 (0.361)***

Notes: The sample size is 48. Estimates are weighted by the same weights used in the wage regressions (the CPS earnings weights), which provides approximate weighting by population size while weighting observations in different states the same as in the wage regressions. State housing price premia are computed from 2000 Census data (5 percent sample), as the state dummy variables in a hedonic regression for house prices. The computational method is the same as in Albouy (2009), although applied at the state level. Costs are based on both owned and rented homes and include utility costs, and the regression controls for rental and condominium status, dwelling size, rooms, acreage, commercial use, kitchen and plumbing facilities, and age of building.

Sources: CPS ORG files, 1994-2005; 2000 Census 5% sample.

Table 5: Wage Regressions with Public Sector-Amenity Interactions, for Public State or Local Workers

	Union and nonunion public-sector workers vs. all workers						Only union public-sector workers vs. all workers	
	(1)	(2)	(3)	(4)	(5)	(6)	(7)	(8)
Mild	-0.0002 (0.0012)				-0.0004 (0.0005)	-0.0014 (0.0005) ^{***}	-0.0004 (0.0005)	-0.0014 (0.0005) ^{***}
Dry		0.009 (0.003) ^{***}			0.011 (0.002) ^{***}	-0.0015 (0.0023)	0.011 (0.002) ^{***}	-0.0011 (0.0024)
Proximity			0.089 (0.061)		0.114 (0.036) ^{***}	-0.030 (0.029)	0.118 (0.037) ^{***}	-0.023 (0.028)
Density				0.021 (0.013)	0.013 (0.007) [*]	-0.015 (0.004) ^{***}	0.014 (0.007) ^{**}	-0.014 (0.005) ^{***}
Public state or local	-0.047 (0.010) ^{***}	-0.046 (0.010) ^{***}	-0.044 (0.007) ^{***}	-0.044 (0.010) ^{***}	-0.042 (0.007) ^{***}	-0.041 (0.007) ^{***}	-0.058 (0.012) ^{***}	-0.060 (0.012) ^{***}
Housing price premium (\$1,000s)						0.023 (0.003) ^{***}		0.022 (0.003) ^{***}
<i>Public state or local × mild</i>	0.0005 (0.0009)				0.0010 (0.0006)	0.0012 (0.0006) [*]	0.0005 (0.0006)	0.0006 (0.0007)
<i>Public state or local × dry</i>		0.0025 (0.0042)			0.0025 (0.0026)	0.0024 (0.0024)	0.0061 (0.0035) [*]	0.0061 (0.0038)
<i>Public state or local × proximity</i>			0.137 (0.051) ^{***}		0.104 (0.049) ^{**}	0.107 (0.053) ^{**}	0.324 (0.097) ^{***}	0.310 (0.097) ^{***}
<i>Public state or local × density</i>				0.033 (0.009) ^{***}	0.030 (0.004) ^{***}	0.029 (0.004) ^{***}	0.035 (0.007) ^{***}	0.038 (0.007) ^{***}
<i>Joint significance (p-value)</i>					<0.001	<0.001	<0.001	<0.001
Mild + interaction	0.0003 (0.0018)				0.0006 (0.0006)	-0.0003 (0.0003)	0.0001 (0.0007)	-0.0008 (0.0004) [*]
Dry + interaction		0.0112 (0.0060) [*]			0.0132 (0.0026) ^{***}	0.0009 (0.0024)	0.0167 (0.0043) ^{***}	0.0050 (0.0045)
Proximity + interaction			0.226 (0.099) ^{**}		0.217 (0.072) ^{***}	0.077 (0.036) ^{**}	0.441 (0.121) ^{***}	0.287 (0.081) ^{***}
Density + interaction				0.054 (0.022) ^{**}	0.043 (0.010) ^{***}	0.014 (0.006) ^{**}	0.049 (0.011) ^{***}	0.024 (0.009) ^{***}
N	1,746,644	1,746,644	1,746,644	1,746,644	1,746,644	1,746,644	1,597,046	1,597,046

Notes and source: See notes to Tables 3 and 4. The amenity variables are demeaned (based on the same population weights used for the regression, and using the same sample), so that the main effects capture the effect at the sample means. The regressions include controls for education (16 categories), age and its square, sex, race, Hispanic ethnicity, marital status (7 categories), residence in a metro area, federal employment, year dummy variables, a dummy variable for union membership, and interactions between the union membership dummy variable and the amenities included in the specification. In columns 7 and 8 nonunionized public-sector workers are excluded. The “amenity + interaction” rows report the sum of the main amenity effect and its interaction with the public-sector worker variable. Given that the regressions also include union-amenity interactions, these sums should be interpreted as the differences within the union or nonunion sector (and only the union sector in columns 7 and 8), and do not reflect differences in unionization between the private and public sectors.

Sources: CPS ORG files, 1994-2005; 2000 Census 5% sample.

Table 6: Wage Regressions with Public Sector-Amenity Interactions, for Unionized Public State or Local Workers, Sensitivity Analyses

	Urban	Non-urban	Less than bachelor's degree	Bachelor's degree	Non-black, non-Hispanic	Black	Hispanic
	(1)	(2)	(3)	(4)	(5)	(6)	(7)
Mild	-0.0015 (0.0005) ^{***}	-0.0015 (0.0004) ^{***}	-0.0015 (0.0004) ^{***}	-0.0012 (0.0009)	-0.0011 (0.0006) [*]	-0.0020 (0.0004) ^{***}	-0.0033 (0.0002) ^{***}
Dry	0.0002 (0.0024)	-0.010 (0.004) ^{***}	-0.002 (0.002)	0.001 (0.004)	-0.001 (0.003)	0.002 (0.002)	0.002 (0.002)
Proximity	-0.023 (0.034)	-0.039 (0.031)	-0.037 (0.021) [*]	0.017 (0.056)	-0.006 (0.030)	-0.048 (0.055)	0.034 (0.035)
Density	-0.011 (0.005) ^{**}	-0.039 (0.008) ^{***}	-0.021 (0.003) ^{***}	0.001 (0.007)	-0.016 (0.005) ^{***}	-0.011 (0.004) ^{**}	-0.018 (0.004) ^{***}
Public state or local	-0.054 (0.011) ^{***}	-0.086 (0.020) ^{***}	-0.047 (0.008) ^{***}	0.058 (0.012) ^{***}	-0.076 (0.012) ^{***}	0.018 (0.011)	0.024 (0.019)
Housing price premium (\$1,000s)	0.022 (0.003) ^{***}	0.028 (0.005) ^{***}	0.023 (0.002) ^{***}	0.021 (0.005) ^{***}	0.024 (0.004) ^{***}	0.021 (0.003) ^{***}	0.013 (0.003) ^{***}
<i>Public state or local × mild</i>	0.0006 (0.0006)	-0.0010 (0.0012)	0.0003 (0.0005)	-0.0012 (0.0010)	0.0003 (0.0006)	-0.0002 (0.0013)	0.00001 (0.0018)
<i>Public state or local × dry</i>	0.0041 (0.0035)	0.0043 (0.0065)	0.0070 (0.0025) ^{***}	0.0053 (0.0049)	0.0085 (0.0037) ^{**}	0.0035 (0.0048)	0.0012 (0.0087)
<i>Public state or local × proximity</i>	0.280 (0.092) ^{***}	0.209 (0.097) ^{**}	0.163 (0.062) ^{**}	0.364 (0.102) ^{***}	0.288 (0.092) ^{***}	0.489 (0.154) ^{***}	0.231 (0.126) [*]
<i>Public state or local × density</i>	0.033 (0.007) ^{***}	0.047 (0.007) ^{***}	0.031 (0.005) ^{***}	0.012 (0.009)	0.039 (0.007) ^{***}	0.011 (0.012)	0.030 (0.010) ^{***}
<i>Joint significance (p-value)</i>	<0.001	<0.001	<0.001	<0.001	<0.001	<0.001	<0.001
Mild + interaction	-0.0009 (0.0004) ^{**}	-0.0025 (0.0014) [*]	-0.0012 (0.0004) ^{***}	-0.0024 (0.0008) ^{***}	-0.0008 (0.0005) [*]	-0.0022 (0.0013) [*]	-0.0033 (0.0019) [*]
Dry + interaction	0.0042 (0.0046)	-0.0061 (0.0074)	0.0047 (0.0032)	0.0068 (0.0060)	0.0080 (0.0047) [*]	0.0057 (0.0049)	0.0028 (0.0087)
Proximity + interaction	0.257 (0.069) ^{***}	0.170 (0.101) [*]	0.125 (0.059) ^{**}	0.381 (0.066) ^{***}	0.282 (0.073) ^{***}	0.441 (0.139) ^{***}	0.264 (0.143) ^{**}
Density + interaction	0.022 (0.010) ^{**}	0.008 (0.009)	0.010 (0.007)	0.013 (0.013)	0.023 (0.010) ^{**}	0.010 (0.013)	0.012 (0.010)
N	1,265,334	331,712	1,184,290	412,756	1,294,598	146,909	159,851

Notes: See notes to Tables 3-5. Specification and sample, aside from restrictions noted in column heading, are the same as in column (7) of Table 5.

Sources: CPS ORG files, 1994-2005; 2000 Census 5% sample.

Table 7: Wage Regressions with Public Sector-Amenity Interactions, for Public State (Only) Workers

	Union and nonunion public-sector workers vs. all workers						Only union public-sector workers vs. all workers	
	(1)	(2)	(3)	(4)	(5)	(6)	(7)	(8)
Mild	-0.0001 (0.0012)				-0.0004 (0.0005)	-0.0013 (0.0005)**	-0.0004 (0.0005)	-0.0013 (0.0005)**
Dry		0.009 (0.003)**			0.011 (0.002)***	-0.001 (0.002)	0.011 (0.002)***	-0.0009 (0.0023)
Proximity			0.095 (0.061)		0.116 (0.036)***	-0.023 (0.027)	0.118 (0.037)***	-0.020 (0.027)
Density				0.022 (0.014)	0.014 (0.007)**	-0.013 (0.004)***	0.014 (0.007)**	-0.013 (0.004)***
Public state or local	-0.042 (0.008)***	-0.042 (0.008)***	-0.039 (0.006)***	-0.038 (0.009)***	-0.035 (0.007)***	-0.034 (0.007)***	-0.050 (0.011)***	-0.054 (0.012)***
Housing price premium (\$1,000s)						0.022 (0.003)***		0.022 (0.003)***
<i>Public state or local × mild</i>	-0.00001 (0.0007)				0.0003 (0.0005)	0.0003 (0.0005)	-0.0005 (0.0007)	-0.0005 (0.0007)
<i>Public state or local × dry</i>		0.0010 (0.0031)			0.0020 (0.0018)	0.0027 (0.0016)*	0.0083 (0.0036)**	0.0097 (0.0037)**
<i>Public state or local × proximity</i>			0.096 (0.033)***		0.090 (0.036)**	0.106 (0.042)**	0.355 (0.100)***	0.339 (0.105)***
<i>Public state or local × density</i>				0.026 (0.010)**	0.018 (0.007)***	0.016 (0.005)***	0.016 (0.007)**	0.021 (0.007)***
<i>Joint significance (p-value)</i>					<0.001	<0.001	<0.001	<0.001
Mild + interaction	-0.0001 (0.0017)				-0.0001 (0.0007)	-0.0010 (0.0004)**	-0.0009 (0.0008)	-0.0019 (0.0005)***
Dry + interaction		0.0099 (0.0056)*			0.0126 (0.0029)***	0.0016 (0.0025)	0.0189 (0.0044)***	0.0088 (0.0044)*
Proximity + interaction			0.190 (0.084)**		0.206 (0.060)***	0.082 (0.033)**	0.473 (0.125)***	0.319 (0.092)***
Density + interaction				0.048 (0.023)**	0.032 (0.012)**	0.003 (0.007)	0.031 (0.012)**	0.008 (0.009)
N	1,591,154	1,591,154	1,591,154	1,591,154	1,591,154	1,591,154	1,529,594	1,529,594

Notes: See notes to Tables 3-5. The only difference relative to Table 5 is that public local workers are omitted.
Sources: CPS ORG files, 1994-2005; 2000 Census 5% sample.

Table 8: Descriptive Statistics on Distribution of Teachers by Sector and Union Membership

Public state or local	0.758
Public state only	0.096
Public federal	0.007
Union member	0.552
Union member and public state or local	0.507
Union member and public state only	0.054
Union member and public federal	0.003

Notes: The sample is restricted to elementary and secondary school teachers, defined based on the following Census of Population occupational codes: for 2002 and earlier (1990 Census codes), teachers in kindergarten or pre-kindergarten (155), elementary school (156), secondary school (157), or special education (158); and for 2003 and after (2002 Census codes), preschool and kindergarten teachers (2300), elementary and middle school teachers (2310), secondary school teachers (2320), and special education teachers (2330). The sample size is 68,127. See notes to Table 1.
Source: CPS ORG files, 1994-2005.

Table 9: Wage Regressions with Public Sector-Amenity Interactions, for Public State or Local Teachers

	Union and nonunion public-sector teachers vs. others			Only union public-sector teachers vs. others		
	(1)	(2)	(3)	(4)	(5)	(6)
Mild	-0.0004 (0.0005)	-0.0013 (0.0005)**	-0.0011 (0.0005)**	-0.0004 (0.0005)	-0.0013 (0.0005)**	-0.0011 (0.0005)**
Dry	0.0104 (0.0025)***	-0.0012 (0.0024)	0.0024 (0.0028)	0.0105 (0.0025)***	-0.0011 (0.0024)	0.0026 (0.0029)
Proximity	0.113 (0.035)**	-0.026 (0.028)	-0.005 (0.021)	0.116 (0.036)***	-0.022 (0.027)	-0.002 (0.021)
Density	0.014 (0.007)**	-0.013 (0.004)***	-0.020 (0.004)***	0.014 (0.007)**	-0.013 (0.004)***	-0.019 (0.004)***
Public state or local	0.108 (0.019)***	0.109 (0.018)***	0.109 (0.019)***	0.103 (0.019)***	0.103 (0.019)***	0.103 (0.020)***
Teacher	-0.179 (0.016)***	-0.177 (0.016)***	-0.178 (0.016)***	-0.179 (0.016)***	-0.177 (0.016)***	-0.177 (0.016)***
Housing price premium (\$1,000s)		0.022 (0.003)***	0.024 (0.002)***		0.022 (0.003)***	0.024 (0.002)***
Student-teacher ratio			-0.005 (0.002)**			-0.005 (0.002)**
Student-teacher ratio × public teacher			0.0011 (0.0054)			0.0054 (0.0089)
<i>Public state or local × mild</i>	0.0017 (0.0007)**	0.0020 (0.0007)***	0.0019 (0.0007)***	0.0004 (0.0011)	0.0006 (0.0011)	0.0003 (0.0012)
<i>Public state or local × dry</i>	0.0023 (0.0028)	0.0017 (0.0026)	0.0006 (0.0051)	0.0085 (0.0051)	0.0077 (0.0052)	0.0026 (0.0076)
<i>Public state or local × proximity</i>	0.253 (0.056)***	0.246 (0.056)***	0.240 (0.076)***	0.474 (0.130)***	0.469 (0.130)***	0.433 (0.137)***
<i>Public state or local × density</i>	0.069 (0.009)***	0.066 (0.009)***	0.068 (0.010)***	0.068 (0.012)***	0.069 (0.012)***	0.074 (0.015)***
<i>Joint significance (p-value)</i>	<0.001	<0.001	<0.001	<0.001	<0.001	<0.001
Mild + interaction	0.0013 (0.0009)	0.0007 (0.0007)	0.0008 (0.0007)	-0.00001 (0.0012)	-0.0007 (0.0009)	-0.0008 (0.0010)
Dry + interaction	0.0128 (0.0039)***	0.0005 (0.0038)	0.0031 (0.0053)	0.0190 (0.0057)***	0.0066 (0.0060)	0.0052 (0.0072)
Proximity + interaction	0.366 (0.074)***	0.220 (0.046)***	0.235 (0.073)***	0.591 (0.151)***	0.447 (0.114)***	0.431 (0.132)***
Density + interaction	0.081 (0.015)***	0.053 (0.011)***	0.048 (0.011)***	0.082 (0.017)***	0.056 (0.014)***	0.055 (0.016)***
N	1,555,101	1,555,101	1,555,101	1,535,822	1,535,822	1,535,822

Notes: See notes to Tables 3-5. The only difference relative to Table 5 is that only teachers are included among public-sector workers. The student-teacher ratio is demeaned (based on the same population weights used for the regression, and using the same sample), so that the main effects capture the effect at the sample means.

Sources: CPS ORG files, 1994-2005; 2000 Census 5% sample; student-teacher ratios are for 2007-8, and are taken from <http://www.nea.org/home/29402.htm> (viewed October 13, 2010).

Table 10: Descriptive Statistics on Distribution of Corrections Officers by Sector and Union Membership

Public state or local	0.949
Public state only	0.481
Public federal	0.051
Union member	0.562
Union member and public state or local	0.541
Union member and public state only	0.292
Union member and public federal	0.022

Notes: The sample is restricted to corrections officers, defined based on the following Census of Population occupational codes: for 2002 and earlier (1990 Census codes), sheriffs, bailiffs, and other law enforcement officers (423, which does not include police), and correctional institution officers (424); for 2003 and after (2002 Census codes), first-line supervisors/managers of correctional officers (3700), and bailiffs, correctional officers, and jailers (3800). The sample size is 6,631. See notes to Table 1.
Source: CPS ORG files, 1994-2005.

Table 11: Wage Regressions with Public Sector-Amenity Interactions, for Public State or Local Corrections Officers

	Union and nonunion public-sector corrections officers vs. others			Only union public-sector corrections officers vs. others		
	(1)	(2)	(3)	(4)	(5)	(6)
Mild	-0.0004 (0.0005)	-0.0013 (0.0005)**	-0.0012 (0.0006)*	-0.0004 (0.0005)	-0.0013 (0.0005)**	-0.0012 (0.0006)*
Dry	0.0106 (0.0025)***	-0.0009 (0.0023)	-0.0002 (0.0021)	0.0106 (0.0025)***	-0.0008 (0.0023)	-0.0002 (0.0021)
Proximity	0.117 (0.036)***	-0.020 (0.026)	-0.015 (0.027)	0.117 (0.036)***	-0.019 (0.026)	-0.015 (0.027)
Density	0.014 (0.007)**	-0.012 (0.004)***	-0.014 (0.005)***	0.014 (0.007)**	-0.012 (0.004)***	-0.014 (0.005)***
Public state or local	0.034 (0.041)	0.035 (0.041)	0.034 (0.041)	0.020 (0.042)	0.018 (0.042)	0.018 (0.042)
Corrections officer	0.003 (0.038)	0.003 (0.038)	0.003 (0.038)	0.003 (0.038)	0.003 (0.038)	0.003 (0.038)
Housing price premium (\$1,000s)		0.022 (0.003)***	0.021 (0.003)***		0.022 (0.003)***	0.021 (0.003)***
Inmates per officer			-0.003 (0.004)			-0.003 (0.004)
Inmates per officer × public corrections			-0.011 (0.010)			-0.007 (0.013)
<i>Public state or local × mild</i>	<i>0.0022</i> <i>(0.0012)*</i>	<i>0.0025</i> <i>(0.0012)**</i>	<i>0.0029</i> <i>(0.0014)**</i>	<i>0.0018</i> <i>(0.0010)*</i>	<i>0.0020</i> <i>(0.0011)*</i>	<i>0.0023</i> <i>(0.0015)</i>
<i>Public state or local × dry</i>	<i>0.0123</i> <i>(0.0048)**</i>	<i>0.0122</i> <i>(0.0046)***</i>	<i>0.0142</i> <i>(0.0040)***</i>	<i>0.0183</i> <i>(0.0043)***</i>	<i>0.0181</i> <i>(0.0047)***</i>	<i>0.0193</i> <i>(0.0048)***</i>
<i>Public state or local × proximity</i>	<i>0.185</i> <i>(0.111)</i>	<i>0.173</i> <i>(0.117)</i>	<i>0.181</i> <i>(0.114)</i>	<i>0.337</i> <i>(0.173)*</i>	<i>0.306</i> <i>(0.177)*</i>	<i>0.3031</i> <i>(0.177)*</i>
<i>Public state or local × density</i>	<i>0.063</i> <i>(0.007)***</i>	<i>0.064</i> <i>(0.007)***</i>	<i>0.056</i> <i>(0.009)***</i>	<i>0.064</i> <i>(0.007)***</i>	<i>0.067</i> <i>(0.007)***</i>	<i>0.062</i> <i>(0.007)***</i>
<i>Joint significance (p-value)</i>	<i><0.001</i>	<i><0.001</i>	<i><0.001</i>	<i><0.001</i>	<i><0.001</i>	<i><0.001</i>
Mild + interaction	0.0018 (0.0010)*	0.0012 (0.0008)	0.0017 (0.0009)*	0.0014 (0.0010)	0.0007 (0.0007)	0.0011 (0.0010)
Dry + interaction	0.0229 (0.0044)***	0.0114 (0.0039)***	0.0140 (0.0041)***	0.0289 (0.0044)***	0.0172 (0.0047)***	0.0192 (0.0051)***
Proximity + interaction	0.302 (0.135)**	0.154 (0.102)	0.166 (0.099)	0.455 (0.197)**	0.287 (0.164)*	0.288 (0.164)*
Density + interaction	0.077 (0.010)***	0.051 (0.007)***	0.043 (0.008)***	0.078 (0.009)***	0.054 (0.007)***	0.049 (0.006)***
N	1,510,381	1,510,381	1,510,381	1,507,178	1,507,178	1,507,178

Notes: See notes to Tables 3-5. The only difference relative to Table 5 is that only corrections officers are included among public-sector workers. The inmate-officer ratio is demeaned (based on the same population weights used for the regression, and using the same sample), so that the main effects capture the effect at the sample means.

Sources: CPS ORG files, 1994-2005; 2000 Census 5% sample; inmate-staff ratios are taken from Stephan (2008, Appendix Table 14).

Table 12: Falsification Test, Wage Regressions with Public Sector-Amenity Interactions, for Public Federal Workers

	Union and nonunion federal public-sector workers vs. all private workers	Only union federal public-sector workers vs. all private workers
	(1)	(2)
Mild	-0.0004 (0.0005)	-0.0004 (0.0005)
Dry	0.011 (0.002) ^{***}	0.011 (0.002) ^{***}
Proximity	0.119 (0.037) ^{***}	0.118 (0.037) ^{***}
Density	0.015 (0.007) ^{**}	0.015 (0.007) ^{**}
Public federal	0.098 (0.010) ^{***}	0.013 (0.007) [*]
<i>Public federal</i> <i>× mild</i>	0.00004 (0.0005)	-0.0006 (0.0004)
<i>Public federal</i> <i>× dry</i>	-0.0058 (0.0024) ^{**}	-0.0094 (0.0025) ^{***}
<i>Public federal</i> <i>× proximity</i>	-0.058 (0.044)	-0.106 (0.046) ^{**}
<i>Public federal</i> <i>× density</i>	-0.022 (0.009) ^{**}	0.004 (0.005)
N	1,504,288	1,469,974

Notes: See notes to Tables 3-5. The only difference relative to Table 5 is that only federal workers are included among public-sector workers. The housing cost premia are excluded.

Sources: CPS ORG files, 1994-2005; 2000 Census 5% sample.

2010

- 2010/1, **De Borger, B., Pauwels, W.:** "A Nash bargaining solution to models of tax and investment competition: tolls and investment in serial transport corridors"
- 2010/2, **Chirinko, R.; Wilson, D.:** "Can Lower Tax Rates Be Bought? Business Rent-Seeking And Tax Competition Among U.S. States"
- 2010/3, **Esteller-Moré, A.; Rizzo, L.:** "Politics or mobility? Evidence from us excise taxation"
- 2010/4, **Roehrs, S.; Stadelmann, D.:** "Mobility and local income redistribution"
- 2010/5, **Fernández Llera, R.; García Valiñas, M.A.:** "Efficiency and elusion: both sides of public enterprises in Spain"
- 2010/6, **González Alegre, J.:** "Fiscal decentralization and intergovernmental grants: the European regional policy and Spanish autonomous regions"
- 2010/7, **Jametti, M.; Joanis, M.:** "Determinants of fiscal decentralization: political economy aspects"
- 2010/8, **Esteller-Moré, A.; Galmarini, U.; Rizzo, L.:** "Should tax bases overlap in a federation with lobbying?"
- 2010/9, **Cubel, M.:** "Fiscal equalization and political conflict"
- 2010/10, **Di Paolo, A.; Raymond, J.L.; Calero, J.:** "Exploring educational mobility in Europe"
- 2010/11, **Aidt, T.S.; Dutta, J.:** "Fiscal federalism and electoral accountability"
- 2010/12, **Arqué Castells, P.:** "Venture capital and innovation at the firm level"
- 2010/13, **García-Quevedo, J.; Mas-Verdú, F.; Polo-Otero, J.:** "Which firms want PhDs? The effect of the university-industry relationship on the PhD labour market"
- 2010/14, **Calabrese, S.; Epple, D.:** "On the political economy of tax limits"
- 2010/15, **Jofre-Monseny, J.:** "Is agglomeration taxable?"
- 2010/16, **Dragu, T.; Rodden, J.:** "Representation and regional redistribution in federations"
- 2010/17, **Borck, R.; Wimbersky, M.:** "Political economics of higher education finance"
- 2010/18, **Dohse, D.; Walter, S.G.:** "The role of entrepreneurship education and regional context in forming entrepreneurial intentions"
- 2010/19, **Åslund, O.; Edin, P-A.; Fredriksson, P.; Grönqvist, H.:** "Peers, neighborhoods and immigrant student achievement - Evidence from a placement policy"
- 2010/20, **Pelegrín, A.; Balance, C.:** "International industry migration and firm characteristics: some evidence from the analysis of firm data"
- 2010/21, **Koh, H.; Riedel, N.:** "Do governments tax agglomeration rents?"
- 2010/22, **Curto-Grau, M.; Herranz-Loncán, A.; Solé-Ollé, A.:** "The political economy of infrastructure construction: The Spanish "Parliamentary Roads" (1880-1914)"
- 2010/23, **Bosch, N.; Espasa, M.; Mora, T.:** "Citizens' control and the efficiency of local public services"
- 2010/24, **Ahamdanech-Zarco, I.; García-Pérez, C.; Simón, H.:** "Wage inequality in Spain: A regional perspective"
- 2010/25, **Folke, O.:** "Shades of brown and green: Party effects in proportional election systems"
- 2010/26, **Falck, O.; Heblich, H.; Lameli, A.; Südekum, J.:** "Dialects, cultural identity and economic exchange"
- 2010/27, **Baum-Snow, N.; Pavan, R.:** "Understanding the city size wage gap"
- 2010/28, **Molloy, R.; Shan, H.:** "The effect of gasoline prices on household location"
- 2010/29, **Koethenbuenger, M.:** "How do local governments decide on public policy in fiscal federalism? Tax vs. expenditure optimization"
- 2010/30, **Abel, J.; Dey, I.; Gabe, T.:** "Productivity and the density of human capital"
- 2010/31, **Gerritse, M.:** "Policy competition and agglomeration: a local government view"
- 2010/32, **Hilber, C.; Lyytikäinen, T.; Vermeulen, W.:** "Capitalization of central government grants into local house prices: panel data evidence from England"
- 2010/33, **Hilber, C.; Robert-Nicoud, F.:** "On the origins of land use regulations: theory and evidence from us metro areas"
- 2010/34, **Picard, P.; Tabuchi, T.:** "City with forward and backward linkages"
- 2010/35, **Bodenhorn, H.; Cuberes, D.:** "Financial development and city growth: evidence from Northeastern American cities, 1790-1870"
- 2010/36, **Vulovic, V.:** "The effect of sub-national borrowing control on fiscal sustainability: how to regulate?"
- 2010/37, **Flamand, S.:** "Interregional transfers, group loyalty and the decentralization of redistribution"
- 2010/38, **Ahlfeldt, G.; Feddersen, A.:** "From periphery to core: economic adjustments to high speed rail"
- 2010/39, **González-Val, R.; Pueyo, F.:** "First nature vs. second nature causes: industry location and growth in the presence of an open-access renewable resource"
- 2010/40, **Billings, S.; Johnson, E.:** "A nonparametric test for industrial specialization"
- 2010/41, **Lee, S.; Li, Q.:** "Uneven landscapes and the city size distribution"
- 2010/42, **Ploeckl, F.:** "Borders, market access and urban growth; the case of Saxon towns and the Zollverein"
- 2010/43, **Hortas-Rico, M.:** "Urban sprawl and municipal budgets in Spain: a dynamic panel data analysis"
- 2010/44, **Koethenbuenger, M.:** "Electoral rules and incentive effects of fiscal transfers: evidence from Germany"

- 2010/45, Solé-Ollé, A.; Viladecans-Marsal, E.: "Lobbying, political competition, and local land supply: recent evidence from Spain"
- 2010/46, Larcinese, V.; Rizzo, L.; Testa, C.: "Why do small states receive more federal money? Us senate representation and the allocation of federal budget"
- 2010/47, Patacchini, E.; Zenou, Y.: "Neighborhood effects and parental involvement in the intergenerational transmission of education"
- 2010/48, Nedelkoska, L.: "Occupations at risk: explicit task content and job security"
- 2010/49, Jofre-Monseny, J.; Marín-López, R.; Viladecans-Marsal, E.: "The mechanisms of agglomeration: Evidence from the effect of inter-industry relations on the location of new firms"
- 2010/50, Revelli, F.: "Tax mix corners and other kinks"
- 2010/51, Duch-Brown, N.; Parellada-Sabata M.; Polo-Otero, J.: "Economies of scale and scope of university research and technology transfer: a flexible multi-product approach"
- 2010/52, Duch-Brown, N.; Vilalta M.: "Can better governance increase university efficiency?"
- 2010/53, Cremer, H.; Goulão, C.: "Migration and social insurance"
- 2010/54, Mittermaier, F.; Rincke, J.: "Do countries compensate firms for international wage differentials?"
- 2010/55, Bogliacino, F.; Vivarelli, M.: "The job creation effect or R&D expenditures"
- 2010/56, Piacenza, M; Turati, G.: "Does fiscal discipline towards sub-national governments affect citizens' well-being? Evidence on health"

2011

- 2011/1, Oppedisano, V; Turati, G.: "What are the causes of educational inequalities and of their evolution over time in Europe? Evidence from PISA"
- 2011/2, Dahlberg, M; Edmark, K; Lundqvist, H.: "Ethnic diversity and preferences for redistribution "
- 2011/3, Canova, L.; Vaglio, A.: "Why do educated mothers matter? A model of parental help"
- 2011/4, Delgado, F.J.; Lago-Peñas, S.; Mayor, M.: "On the determinants of local tax rates: new evidence from Spain"
- 2011/5, Piolatto, A.; Schuett, F.: "A model of music piracy with popularity-dependent copying costs"
- 2011/6, Duch, N.; García-Estévez, J.; Parellada, M.: "Universities and regional economic growth in Spanish regions"
- 2011/7, Duch, N.; García-Estévez, J.: "Do universities affect firms' location decisions? Evidence from Spain"
- 2011/8, Dahlberg, M.; Mörk, E.: "Is there an election cycle in public employment? Separating time effects from election year effects"
- 2011/9, Costas-Pérez, E.; Solé-Ollé, A.; Sorribas-Navarro, P.: "Corruption scandals, press reporting, and accountability. Evidence from Spanish mayors"
- 2011/10, Choi, A.; Calero, J.; Escardíbul, J.O.: "Hell to touch the sky? private tutoring and academic achievement in Korea"
- 2011/11, Mira Godinho, M.; Cartaxo, R.: "University patenting, licensing and technology transfer: how organizational context and available resources determine performance"
- 2011/12, Duch-Brown, N.; García-Quevedo, J.; Montolio, D.: "The link between public support and private R&D effort: What is the optimal subsidy?"
- 2011/13, Breuillé, M.L.; Duran-Vigneron, P.; Samson, A.L.: "To assemble to resemble? A study of tax disparities among French municipalities"
- 2011/14, McCann, P.; Ortega-Argilés, R.: "Smart specialisation, regional growth and applications to EU cohesion policy"
- 2011/15, Montolio, D.; Trillas, F.: "Regulatory federalism and industrial policy in broadband telecommunications"
- 2011/16, Pelegrín, A.; Bolancé, C.: "Offshoring and company characteristics: some evidence from the analysis of Spanish firm data"
- 2011/17, Lin, C.: "Give me your wired and your highly skilled: measuring the impact of immigration policy on employers and shareholders"
- 2011/18, Bianchini, L.; Revelli, F.: "Green politics: urban environmental performance and government popularity"
- 2011/19, López Real, J.: "Family reunification or point-based immigration system? The case of the U.S. and Mexico"
- 2011/20, Bogliacino, F.; Piva, M.; Vivarelli, M.: "The impact of R&D on employment in Europe: a firm-level analysis"
- 2011/21, Tonello, M.: "Mechanisms of peer interactions between native and non-native students: rejection or integration?"
- 2011/22, García-Quevedo, J.; Mas-Verdú, F.; Montolio, D.: "What type of innovative firms acquire knowledge intensive services and from which suppliers?"

- 2011/23, Banal-Estañol, A.; Macho-Stadler, I.; Pérez-Castrillo, D.: "Research output from university-industry collaborative projects"
- 2011/24, Ligthart, J.E.; Van Oudheusden, P.: "In government we trust: the role of fiscal decentralization"
- 2011/25, Mongrain, S.; Wilson, J.D.: "Tax competition with heterogeneous capital mobility"
- 2011/26, Caruso, R.; Costa, J.; Ricciuti, R.: "The probability of military rule in Africa, 1970-2007"
- 2011/27, Solé-Ollé, A.; Viladecans-Marsal, E.: "Local spending and the housing boom"
- 2011/28, Simón, H.; Ramos, R.; Sanromá, E.: "Occupational mobility of immigrants in a low skilled economy. The Spanish case"
- 2011/29, Piolatto, A.; Trotin, G.: "Optimal tax enforcement under prospect theory"
- 2011/30, Montolio, D; Piolatto, A.: "Financing public education when altruistic agents have retirement concerns"
- 2011/31, García-Quevedo, J.; Pellegrino, G.; Vivarelli, M.: "The determinants of YICs' R&D activity"
- 2011/32, Goodspeed, T.J.: "Corruption, accountability, and decentralization: theory and evidence from Mexico"
- 2011/33, Pedraja, F.; Cordero, J.M.: "Analysis of alternative proposals to reform the Spanish intergovernmental transfer system for municipalities"
- 2011/34, Jofre-Monseny, J.; Sorribas-Navarro, P.; Vázquez-Grenno, J.: "Welfare spending and ethnic heterogeneity: evidence from a massive immigration wave"
- 2011/35, Lyytikäinen, T.: "Tax competition among local governments: evidence from a property tax reform in Finland"
- 2011/36, Brühlhart, M.; Schmidheiny, K.: "Estimating the Rivalness of State-Level Inward FDI"
- 2011/37, García-Pérez, J.I.; Hidalgo-Hidalgo, M.; Robles-Zurita, J.A.: "Does grade retention affect achievement? Some evidence from Pisa"
- 2011/38, Boffa, f.; Panzar, J.: "Bottleneck co-ownership as a regulatory alternative"
- 2011/39, González-Val, R.; Olmo, J.: "Growth in a cross-section of cities: location, increasing returns or random growth?"
- 2011/40, Anesi, V.; De Donder, P.: "Voting under the threat of secession: accommodation vs. repression"
- 2011/41, Di Pietro, G.; Mora, T.: "The effect of the l'Aquila earthquake on labour market outcomes"



U
UNIVERSITAT DE BARCELONA
B

ieb@ub.edu
www.ieb.ub.edu

Cities and Innovation

Document de
treball de l'IEB