

Modelling infiltration and geostatistical analysis of spatial variability of sorptivity and transmissivity in a flood spreading area

Fereshte Haghighi-Fashi^{1*}, Forood Sharifi² and Koorosh Kamali²

¹ Faculty of Agricultural Engineering and Technology, University of Tehran, Tehran, Iran. ² Soil Conservation and Watershed Management Research Institute, Tehran, Iran

Abstract

Knowledge of infiltration characteristics is useful in hydrological studies of agricultural soils. Soil hydraulic parameters such as steady infiltration rate, sorptivity, and transmissivity can exhibit appreciable spatial variability. The main objectives of this study were to examine several mathematical models of infiltration and to analyze the spatial variability of observed final infiltration rate, estimated sorptivity and estimated transmissivity in flood spreading and control areas in Ilam province, Iran. The suitability of geostatistics to describe such spatial variability was assessed using data from 30 infiltration measurements sampled along three lines. The Horton model provided the most accurate simulation of infiltration considering all measurements and the Philip's two-term model provided less accurate simulation. A comparison of the measured values and the estimated final infiltration rates showed that the Kostiakov-Lewis, Kostiakov, and SCS models could not estimate the final infiltration rate as well as Horton model. Estimated sorptivity and transmissivity parameters of the Philip's two-term model and final infiltration rate had spatial structure, and were considered to be structural variables over the transect pattern. The Gaussian model provided the best-fit theoretical variogram for these three parameters. Variogram values ranged from 99 and 88 m for sorptivity and final infiltration rate to 686 (spherical) and 384 m (Gaussian) for transmissivity. Sorptivity, transmissivity and final infiltration attributes showed a high degree of spatial dependence, being 0.99, 0.81 and 1, respectively. Results showed that kriging could be used to predict the studied parameters in the study area.

Additional key words: Horton model; Kostiakov-Lewis model; kriging; Philip's two-term model; SCS model; variogram.

Introduction

Evaluation of soil infiltration characteristics and knowledge of sorptivity and transmissivity can be useful for irrigation management. Measurement of these parameters is time consuming; consequently several empirical models (Kostiakov, 1932; Horton, 1940) and physical models (Green-Ampt, 1911; Philip, 1957) have been used for their estimation. Summaries of these mathematical models are provided by Philip (1969) and Ravi & Williams (1998).

The ability of mathematical models to estimate infiltration rate was examined by Shukla *et al.* (2003), Machiwal *et al.* (2006), Haghighi *et al.* (2010). Machiwal *et al.* (2006) found that the infiltration process in wasteland in Kharagpur, India was well-described by Philip's model (Philip, 1957). Haghighi *et al.* (2010) showed that the Horton model (Horton, 1940) provided the best predictions of final infiltration rates in rangelands in the Taleghan watershed in Iran.

The soil hydraulic parameters of transmissivity and sorptivity govern the infiltration rate (Sepaskhah *et al.*,

*Corresponding author: Haghighihf@ut.ac.ir

Received: 25-06-13. Accepted: 18-02-14

Abbreviations used: Nomenclature: A (transmissivity factor, LT^{-1}); a (constant parameters of Horton model); β (infiltration decay factor); C_0 (nugget); $C_0 + C$ (sill); c (constant parameters of Horton model); h (distance, L); m (constant parameters of Horton model); μ (Lagrange multiplier); $N(h)$ (number of pairs of points); i_0 (initial infiltration rate, LT^{-1}); i_c (steady infiltration rate, LT^{-1}); $i(t)$ [infiltration rate (LT^{-1})]; R^2 (coefficient of determination); $RMSE$ (root mean squared error); RSS (residual sum of squares); S (soil sorptivity, $LT^{-0.5}$); $S(x_i)$ (known value at location x_i); $S^*(xp)$ (the kriged value at location xp); t (time, T); x_i and $x_j + h$ (values of each pair of points); λ_i (weight related to the data); $\gamma(x_i, x_j)$ (value of variogram corresponding to a vector with origin in x_i and extremity in x_j); z (variable or parameter to interpolate).

2005). Infiltration rate and soil sorptivity are relevant to water movement in the soil medium and transmissivity provides information about relevant hydraulic and structural soil properties. Sorptivity which is a function of soil suction is important for understanding hydraulic properties. It is defined as a physical quantity that shows the capacity of porous media for capillary uptake and release of water in the soil (Philip, 1957). This parameter is also defined as the relationship between soil hydraulic properties and other more easily measured properties such as porosity (Bouma, 1989). Haghighi *et al.* (2010) found that sorptivity exhibits spatial variability under field conditions. They found that the spatial variation of sorptivity showed no clear pattern in the study region, which was in accordance with the findings of Machiwal *et al.* (2006). Transmissivity in the Philip's model may approximate to saturated hydraulic conductivity (K_s) over long periods (Swartzendruber & Youngs, 1974).

An important issue in infiltration modeling is how to describe spatial variability in relevant soil properties. Previous studies have shown large spatial variability in infiltration behavior of agricultural land (Nielsen *et al.*, 1973; Carvallo *et al.*, 1976) and have presented advances in the use of spatial statistics related to soil variability (Burrough, 1993; Machiwal *et al.*, 2006). The coefficient of variation (Jury *et al.*, 1991; Wollenhaupt *et al.*, 1997) is one approach employed in the study of spatial variability. Other technique associated with the spatial variability includes soil mapping unit classification (Mulla & McBratney, 2002). Soil hydraulic properties can vary appreciably even within similar soil mapping units (Comegna & Vitale, 1993). Scaling is one approach that has been used to describe the spatial variability of soil properties (Peck *et al.*, 1977; Machiwal *et al.*, 2006). The geostatistical technique was applied to analyze the spatial variability of soil sorptivity (Sepaskhah *et al.*, 2005) and soil texture (Camarinha *et al.*, 2011). In geostatistic analysis, a variogram or semi-variogram is employed to determine spatial variability of a variable, and provide the input parameters for the spatial interpolation of kriging (Webster & Oliver, 2007). The concept of a geostatistic method has been described by Isaaks & Srivastava (1989) and Kitanidis (1997). The semi-variogram model provides an estimate of the model required to characterize the spatial pattern of the variables. The goal of variogram analysis is to fit a model to the points that form the empirical semi-variogram. The kriging

approach is suitable to investigate the spatial variability of soil water properties that can be estimated with a low sampling cost to make management decisions (Vieira *et al.*, 1981).

The spatial variability of infiltration and related parameters (sorptivity and transmissivity) can be evaluated and predicted using geostatistical techniques (Cressie, 1993; Orjuela-Matta *et al.*, 2012). The objectives of the present study were to model the infiltration rate of flood spreading and control areas and evaluate common models to estimate the final infiltration rate. In addition, geostatistical analysis was performed on steady-state infiltration rates, estimated sorptivity, and estimated transmissivity parameters of a Philip's two-term model in the flood spreading and control areas of the province of Ilam in Iran.

Material and methods

Characteristics of the study flood spreading area

The data used in this study are from a study by Soleimani *et al.* (2011) on the Dehloran flood spreading area, Ilam province, Iran (32° 27' to 32° 35' N latitude and 47° 25' to 47° 42' E longitude, elevation of 200 m) (Fig. 1). The study area encompassed 5200 ha. The flood spreading system is one of the suitable methods for aquifers recharge, flood control, and flood water conservation containing sediment load. This flood spreading area is classified as Entisol. The average annual precipitation is approximately 235 mm and the average annual temperature is 26°C. The climate is arid with a hot summer. Average annual evaporation is 4300 mm. The topography of the area is moderately flat. The soils have low fertility and poor capacity for moisture retention. The texture of the soil is sandy based on USDA soil classification system. Current vegetation types in the area include *Gypsophila stipa*, *Stipa peteropyron*, *Stipa astragalus*, and *Cornalaca alhaji*.

Experimental design and infiltration tests

A total of 30 measurement sites (27 from flood-spreading areas and three from control areas (which were areas that did not receive flooding), were selected over the study area to model infiltration and for

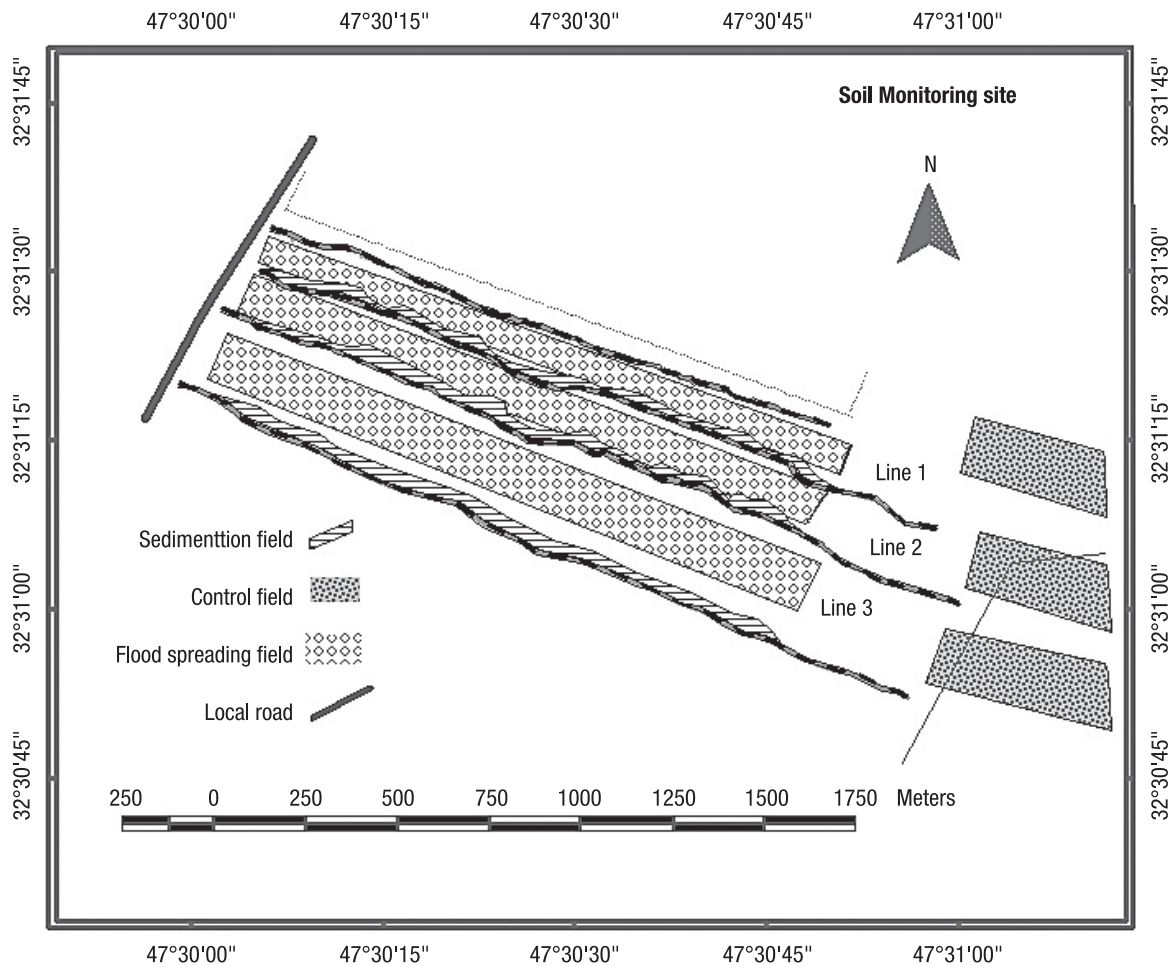
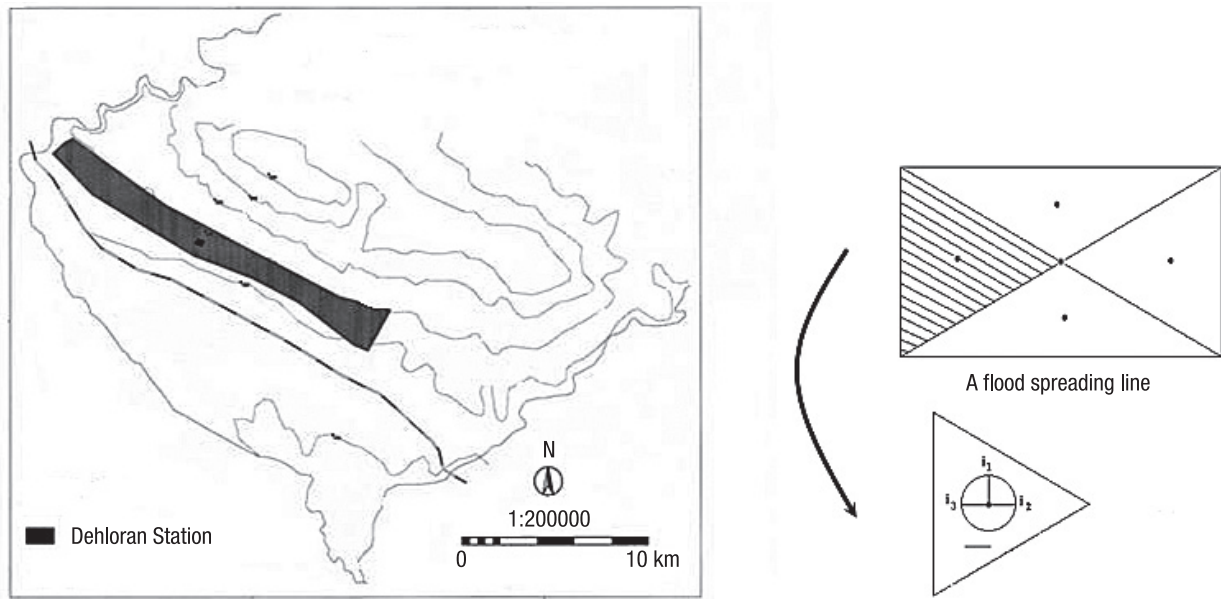


Figure 1. Location of Dehloran station (a), a flood spreading line (b), and location of soil infiltration experiments (c).

geostatistical analysis. The infiltration data were measured on transect (3 lines) pattern (1500 m in size) over the study area (Fig. 1). Three replicate infiltration measurements were made at each of the 30 measurement sites. The first, second and third lines of the flood spreading system and the control line were selected. A total of nine measurements were made along each line of the flood spreading system. The measurement sites were considered to be four triangles as in Fig 1 and that in one triangle, there was a 4 m circle and those three points 90 degrees to one another were selected as the three sampling points. A base center and circular radius of 4 m was considered to select the first, second, and third infiltration measurement points (i_1, i_2, i_3). The mean infiltration rates measured on the transect (line) provided an opportunity for analysis of the spatial variability of the measured infiltration and estimated sorptivity and transmissivity of the Philip's two-term model (Philip, 1957).

Infiltration was measured using a double-ring infiltrometer (Bouwer *et al.*, 1999). The diameter of the inner ring was 30 cm and that of the outer ring was 60 cm with a height of 50 cm. The decreasing rate of water was measured in the inner ring at time intervals of 1, 2, 3, 5, 10, 15, 20, 25, and 30 min. The initial soil water content at the sites ranged from 2.4% to 14.9%. The optimal model-estimated final infiltration rate, sorptivity and transmissivity of the Philip's two-term model, and other model parameters were determined with the least square method using MATLAB™ (The MathWorks Inc, Natick, MA, USA).

Estimation of infiltration model parameters

In the present study, the data from each of the 30 sites across the study area were fitted to commonly-used infiltration models being the Kostiakov (Kostiakov, 1932), Kostiakov-Lewis (Mezencev, 1948), Horton (Horton, 1940), Soil Conservation Service (SCS) (NRCS, 1974), and Philip's two-term (Philip, 1957) models, and the accuracy to estimate infiltration was evaluated. A summary of the infiltration models applied in the current study follows.

— *Kostiakov model*

$$i(t) = at^{-b} \quad [1]$$

— *Kostiakov-Lewis model*. The modified model of Kostiakov for long time is defined as:

$$i(t) = at^{-b} + i_c \quad [2]$$

where $i(t)$ is the infiltration rate (LT^{-1}) as a function of time, a and b are the equation's parameters ($a > 0$ and $0 < b < 1$) and i_c is the steady infiltration rate (LT^{-1}).

— *Horton's model*. The Horton's infiltration model (Horton, 1940) is expressed as follows:

$$i(t) = (i_0 - i_c)e^{-\beta t} + i_c \quad [3]$$

where i_c is the steady infiltration rate (LT^{-1}), i_0 is the initial infiltration rate (LT^{-1}), and t is time (T). β is the infiltration decay factor. In this study, the Horton model has been applied in the form of Equation [4].

$$I = ct + m [1 - \exp(-at)] \quad [4]$$

where I is the cumulative infiltration rate (L) and c , m , and a are the constant parameters and t is time (T).

— *Philip's two-parameter model*. The Philip's two-term model (Philip, 1957) is defined as:

$$i(t) = \frac{1}{2} St^{-0.5} + A \quad [5]$$

where S is sorptivity ($LT^{-0.5}$), that is function of soil matric potential, A is transmissivity factor (LT^{-1}) as a function of soil properties and water content, and t is time (T).

— *SCS model*. Soil Conservation Service (SCS) is expressed as follows:

$$I = at^b + 0.6985 \quad [6]$$

where a and b are the equation's constants. I is the cumulative infiltration rate (L).

Best-fit infiltration model

The coefficient of determination (R^2) and root mean squared error (RMSE) were used to evaluate the best-fit infiltration model for the study area. The observed and estimated final infiltration rates and the ability of the models to estimate the model parameters were evaluated.

Geostatistical analysis

Analysis of the spatial characteristics of the variables (measured steady infiltration rate, estimated sorptivity, and estimated transmissivity) was performed by kriging to assess the viability of spatial interpolation of the parameters.

The variogram ($\hat{A}(h)$) is a major tool in geostatistics to describe the spatial relationship between neighboring observations. The variogram is defined as follows:

$$\gamma_i(h) = \frac{1}{2N(h)} \sum_{i=1}^{N(h)} [z(x_i) - z(x_i + h)]^2 \quad [7]$$

where $N(h)$ is the number of pairs of points that are separated by distance h (Yates & Warrick, 1999), z is the variable or parameter to be interpolated, and x_i and $x_i + h$ are the values of each pair of points.

For geostatistical analysis, a variogram value can be interpolated for any sampling interval. The commonly-used models are linear, logarithmic, spherical, exponential, Gaussian, and pure nugget effect (Isaaks & Srivastava, 1989). Webster & Oliver (2007) reviewed the characteristics and conditions of these models. They have common parameters, including the nugget (C_0), range (a), and sill ($C_0 + C$). The nugget represents discontinuity of the variogram near the origin and non-spatial variation. The range is a measure of the maximum distance at which the constant correlation is reached. The sill is the value of the semi-variance where the model is stabilized and has a constant value.

After assessing the spatial relationship between neighboring observations, the kriging approach was employed for spatial prediction at sites not sampled and to build contour maps (Sepaskhah *et al.*, 2005). The kriging equations are defined as follows:

$$S^*(X_p) = \sum_{i=1}^n \lambda_i S(x_i) \quad [8]$$

$$\begin{cases} \sum_{i=1}^n \lambda_i \gamma(x_i, x_j) + \mu = \gamma(x_i, x) \\ \sum_{i=1}^n \lambda_i = 1 \end{cases} \quad [9]$$

where $S^*(x_p)$ is the krigged value at location x_p ; $S(x_i)$ is the known value at location x_i ; λ_i is the weight related to the data; μ is the Lagrange multiplier; and $\gamma(x_i, x_j)$ is the value of the variogram corresponding to a vector with its origin in x_i and extremity in x_j .

GS+ (Gamma Design Software, Plainwell, MI, USA) and ArcGIS (Redlands, CA, USA) geostatistical analyst were used for geostatistical analysis in this research. The best model was selected based on the highest R^2 and the lowest RSS. The degree of spatial dependence was assessed, based on the relationship between the nugget and the sill ($C / C_0 + C$). Spatial

dependence is classified as weak when it is <0.25 , moderate when it is 0.25 to 0.75 , and strong when it is >0.75 (Cambardella *et al.*, 1994).

Results

Selection of best-fit infiltration model

Parameters values for the selected infiltration models and goodness-of-fit parameters are shown in Tables 1 and 2, respectively. The mean final infiltration rate for the 30 infiltration measurements was 0.15 cm min^{-1} with a minimum of 0.08 cm min^{-1} and maximum of 0.27 cm min^{-1} in the sandy soils of study areas (Table 1). The lowest RMSE was obtained for the Horton model at nearly all sites, demonstrating that the Horton model was the best-fit infiltration model for the entire study area.

The values of the final steady infiltration and RMSE showed that the estimated infiltration rates by the Horton infiltration model were closer to the measured values at the selected flood spreading and control areas (Table 1 and 2). The results showed that the Kostiakov-Lewis model inaccurately estimated the final steady infiltration rate at most sites. A comparison of the measured values and the estimated final infiltration rates showed that the Philip's two-term, Kostiakov, and SCS models were less accurate than the Horton model; which was supported by the higher RMSE values compared to the Horton model (Table 2).

Properties of sorptivity and transmissivity

Table 1 showed that the range of variation of estimated transmissivity was large, which demonstrated considerable spatial variability in the study area. Philip's model parameter A (transmissivity) at 10 sites was found to be 0 (Table 1). These findings demonstrate that the Philip's two-term model did not fit the observed infiltration data well at these 10 sites. A at these 10 sites was negative. The lower limit for the transmissivity estimation was considered to be 0 by default. Despite the negative A , estimated sorptivity (S) ranged from 2.80 to $6.20 \text{ cm min}^{-0.5}$ and A from 0.010 to $0.137 \text{ cm min}^{-1}$ at the different sites.

Estimated transmissivity values from the Philip's two-term infiltration model from 20 sites were used to determine the spatial variability because the values

Table 1. Range of parameters for selected infiltration models

Line	Observed final infiltration rate (cm min ⁻¹)	Philip		Kostiakov		Kostiakov-Lewis			Horton			SCS	
		S	A	a	b	a	b	i _c	a	c	m	a	b
1	0.10-0.18	2.80-5.34	0-0.08	2.13-5.99	0.47-0.61	0-0.0004	0.47-0.61	2.15-5.57	0.02-0.07	0.14-0.23	14.78-28.57	1.95-5.63	0.48-0.63
2	0.10-0.21	2.93-4.32	0.01-0.06	2.33-4.49	0.47-0.59	0	0.47-0.59	2.33-4.55	0.03-0.08	0.15-0.18	18.59-27.95	2.13-4.12	0.49-0.61
3	0.08-0.27	2.86-6.20	0-0.08	2.26-10.12	0.38-0.60	0-0.0002	0.38-0.60	2.26-10.12	0.03-0.09	0.09-0.27	14.91-53.72	2.20-9.73	0.39-0.62
Control	0.12-0.18	3.37-5.13	0.01-0.13	2.67-4.60	0.53-0.62	0	0.53-0.62	2.67-4.60	0.02	0.11-0.12	39.47-46.2	2.46-4.32	0.54-0.64

S: estimated sorptivity (cm min^{-0.5}); A: estimated transmissivity (cm min⁻¹); a and b: equation's parameters (a > 0 and 0 < b < 1); c, m: constant parameters.

Table 2. Goodness of fit values (RMSE: root mean squared error, cm min⁻¹; and R²: coefficient of determination) for infiltration models at individual sites

Line	Measurement	Philip		Kostiakov		Kostiakov-Lewis		Horton		SCS	
		R ²	RMSE	R ²	RMSE	R ²	RMSE	R ²	RMSE	R ²	RMSE
1	1	0.9878	1.841	0.9948	1.196	0.9941	1.279	0.9986	0.6322	0.9932	1.373
	2	0.9771	2.166	0.9755	2.291	0.9756	2.285	0.9995	0.3245	0.9729	2.406
	3	0.9902	1.544	0.9920	1.393	0.9920	1.393	0.9975	0.7990	0.9906	1.508
	4	0.9943	0.946	0.9964	0.751	0.9964	0.751	0.9991	0.3812	0.9953	0.860
	5	0.9926	1.357	0.9955	1.051	0.9955	1.051	0.9989	0.5287	0.9944	1.181
	6	0.9848	1.799	0.9864	1.736	0.9825	2.012	0.9999	0.1767	0.9846	1.847
	7	0.9902	1.033	0.9909	0.996	0.9909	0.996	0.9926	0.9339	0.9891	1.087
	8	0.9709	1.945	0.9683	2.081	0.9706	2.055	0.9990	0.3768	0.9648	2.194
	9	0.9768	1.946	0.9765	2.009	0.9784	1.979	0.9993	0.3435	0.9747	2.083
2	1	0.9929	1.402	0.9958	1.083	0.9957	1.090	0.9996	0.3585	0.9945	1.203
	2	0.9871	1.695	0.9888	1.582	0.9889	1.571	0.9984	0.6151	0.9869	1.709
	3	0.9844	1.419	0.9840	1.438	0.9841	1.432	0.9994	0.2839	0.9819	1.531
	4	0.9839	1.516	0.9851	1.459	0.9851	1.459	0.9987	0.4413	0.9832	1.550
	5	0.9739	1.617	0.9715	1.750	0.9716	1.748	0.9993	0.2863	0.9689	1.827
	6	0.9691	2.058	0.9643	2.265	0.9653	2.235	0.9987	0.4354	0.9608	2.375
	7	0.9873	1.876	0.9895	1.708	0.9895	1.708	0.9983	0.7135	0.9881	1.820
	8	0.9922	1.354	0.9935	1.239	0.9934	1.242	0.9994	0.3914	0.9920	1.375
	9	0.9809	1.291	0.9801	1.361	0.9799	1.367	0.9995	0.2293	0.9772	1.456
3	1	0.9647	2.407	0.9717	2.204	0.9718	2.200	0.9994	0.3304	0.9690	2.307
	2	0.9855	1.342	0.9881	1.214	0.9881	1.214	0.9990	0.3670	0.9860	1.317
	3	0.9941	1.006	0.9967	0.752	0.9967	0.752	0.9974	0.7001	0.9951	0.915
	4	0.9912	1.352	0.9921	1.277	0.9922	1.273	0.9994	0.3744	0.9904	1.411
	5	0.9498	4.398	0.9533	4.320	0.951	4.508	0.9978	0.9575	0.9516	4.394
	6	0.9918	0.974	0.9920	0.961	0.9919	0.968	0.9995	0.2434	0.9902	1.066
	7	0.9878	1.979	0.9871	2.035	0.9871	2.032	0.9987	0.6631	0.9856	2.151
	8	0.8789	7.022	0.9374	5.131	0.9374	5.131	0.9985	0.8123	0.9359	5.194
	9	0.9908	1.604	0.9936	1.335	0.9936	1.345	0.9995	0.3832	0.9922	1.477
Control	1	0.9829	2.188	0.9879	1.842	0.9879	1.842	0.9988	0.5959	0.9864	1.950
	2	0.9748	2.944	0.9767	2.834	0.9764	2.852	0.9952	1.3020	0.9747	2.953
	3	0.9866	2.004	0.9918	1.566	0.9919	1.555	0.9998	0.2766	0.9906	1.680

from the other 10 sites were negative. Overall, the variation in estimated sorptivity and transmissivity values over the study area showed spatial structure. The relationships between estimated sorptivity and

estimated transmissivity were not significant (R² = 0.31) and there was no trend observed for an increase in sorptivity as transmissivity increased (Fig. 2).

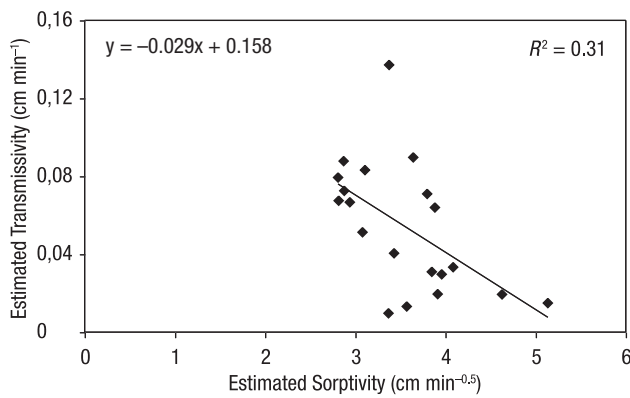


Figure 2. Relationship between estimated transmissivity and estimated sorptivity.

Geostatistical analysis

Data analysis showed that all data had a symmetric distribution. All attributes indicated a normal distribution and the mean and median values were similar (Table 3). The skewness was between -1 and +1 and the kurtosis coefficient was close to 3, demonstrating a behavior that approaches normal distribution (Grego & Vieira, 2005) (Table 3).

Fig. 3 shows the contour maps for attributes obtained using interpolation. The contour lines are more intensive for the final infiltration rate and the variability of its values is greater than for the estimated sorptivity and transmissivity values (Fig. 3). The spatial correlation of final infiltration rate, estimated sorptivity and estimated transmissivity was determined using the appropriate semi-variogram. Fig. 4 shows the best-fitted variograms for the data series. These figures show that estimated transmissivity revealed a spatial structure for both Gaussian and spherical models; estimated sorptivity and measured final infiltration rate revealed spatial structures for the Gaussian model, indicating that the spatial structure was determined for the experiments.

The properties of the fitted semi-variograms are shown in Table 4. The number of lags and the variogram model type were determined using trial and

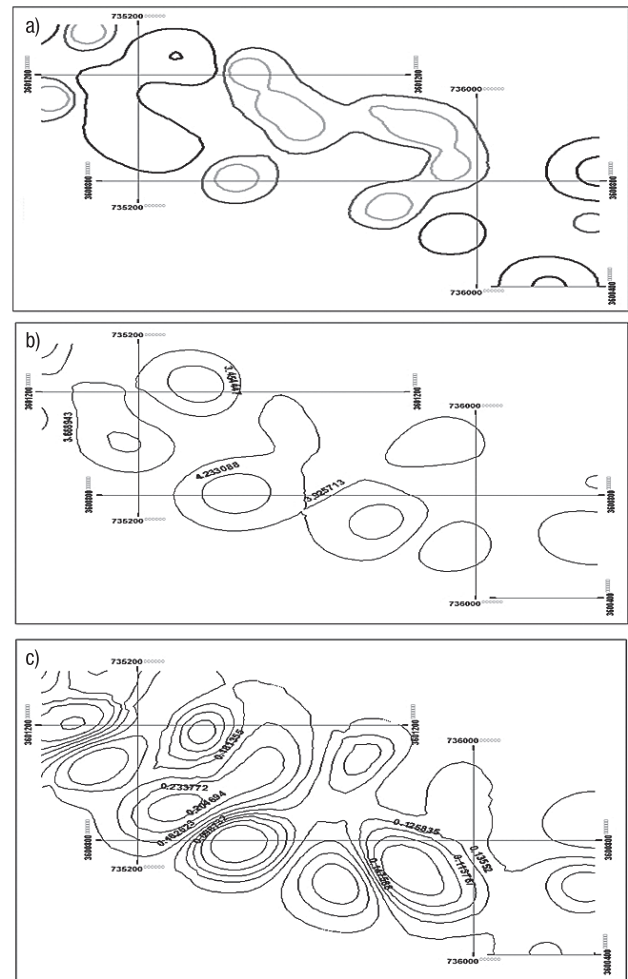


Figure 3. Contour maps obtained by kriging for: (a) estimated transmissivity; (b) estimated sorptivity, and (c) measured final infiltration.

error. The range of variograms was 98.4 m and 87.9 m for sorptivity and the final infiltration rate and 384 m (Gaussian) for transmissivity. Based on the Table 4, all three variograms showed a spatial structure and the range values for these variograms are the same those indicated in their corresponding figures. The predominant variogram model was Gaussian, followed by spherical, exponential, and linear models.

Table 3. Summary statistics of studied attributes from flood spreading and control areas

Parameter	Mean	Median	SD	Min	Max	Skewness	Kurtosis
Estimated transmissivity	0.054	0.058	0.033	0.01	0.13	0.549	2.887
Estimated sorptivity	3.914	3.859	0.881	2.80	6.20	0.997	3.711
Measured final infiltration rate	0.155	0.148	0.046	0.08	0.27	0.457	2.843

SD: standard deviation.

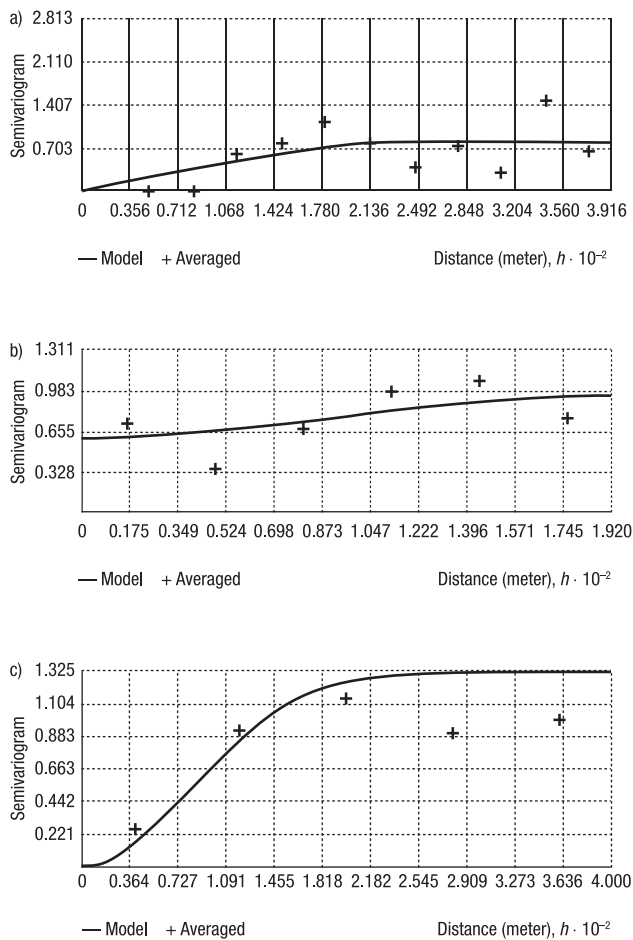


Figure 4. Fitted semi-variograms for: (a) estimated transmissivity; (b) estimated sorptivity, and (c) measured final infiltration rate.

The R^2 values for the present study for estimation of transmissivity, sorptivity, and final infiltration rate were 0.82, 0.68 and 0.85, respectively. The parameters showing the least and highest coefficients of determination were for sorptivity and final infiltration rate, with values of 0.68 and 0.85, respectively. The R^2 for final infiltration rate demonstrates a good fit with the data of the semi-variogram.

Discussion

Best-fit infiltration model

The results show that the Horton model was the most accurate model for the flood spreading and control areas. The suitability of the infiltration models was tested under different conditions, because final infiltration rate is generally a soil-dependent parameter (Singh, 1992; Mishra *et al.*, 2003). The applicability of the Kostiakov and Philip's models to estimate the infiltration rate is site-specific (Mbagwu, 1993). The results from the present and from previously mentioned studies indicate that not all models are applicable in all soils. The different RMSE for each model can be attributed to regional soil variation at the test sites, such as in texture class because of the dependency of infiltration rate on soil texture (Haghighi *et al.*, 2010).

The complexity of field conditions can appreciably influence the relationships between observed and estimated values. Spatial variation and preferential

Table 4. Properties of the semi-variogram models for estimated transmissivity, estimated sorptivity, and final infiltration rate in flood spreading and control areas

Variable	Model	Nugget (C_0)	Sill ($C_0 + C$)	Range (m)	Lag no.	$C / (C_0 + C)$	R^2	RSS
Estimated transmissivity	Spherical	0.0002	0.00137	686.0	12	0.817	0.82	$1.068 \cdot 10^{-7}$
	Exponential	0.0004	0.00341	1787.0	12	0.871	0.74	$1.570 \cdot 10^{-7}$
	Linear	0.0005	0.00147	757.2	12	0.657	0.72	$2.072 \cdot 10^{-6}$
	Gaussian	0.0005	0.00142	384.0	12	0.662	0.82	$1.046 \cdot 10^{-7}$
Estimated sorptivity	Spherical	0.0010	0.84500	173.1	6	0.999	0.67	0.163
	Exponential	0.0770	2.15700	347.1	6	0.964	0.61	0.192
	Linear	0.1429	0.92607	179.2	6	0.846	0.59	0.201
	Gaussian	0.1440	0.90800	98.4	6	0.841	0.68	0.160
Final infiltration rate	Spherical	0	0.00199	192.6	5	0.999	0.81	$4.928 \cdot 10^{-7}$
	Exponential	0	0.00216	101.7	5	1.000	0.70	$6.845 \cdot 10^{-7}$
	Linear	0.0008	0.00227	359.7	5	0.631	0.46	$5.362 \cdot 10^{-6}$
	Gaussian	0	0.00201	87.9	5	1.000	0.85	$3.425 \cdot 10^{-7}$

$C / (C_0 + C)$: degree of spatial dependence; R^2 : coefficient of determination; RSS: residual sum of squares.

flow can affect the observed values and the model parameters. The poor performance of the Kostiaikov-Lewis model in estimating the final infiltration rate may be because it takes longer to obtain a steady infiltration rate (Navar & Synnott, 2000; Haghghi *et al.*, 2010). In addition, it seems that a period of more than 2 h may be required for application of the Philip's two-term model (Philip, 1969; Mbagwu, 1993). In general, spatial soil variation is a very important consideration in infiltration modelling.

Sorptivity and transmissivity

Negative values for estimated transmissivity mean that, after a certain point of time, the infiltration rates estimated by the Philip's equation became negative, demonstrating that extra filtration occurred or that the ground exuded water (Jaynes & Gifford, 1981; Machiwal *et al.*, 2006). It is not possible to physically interpret the negative value for transmissivity; the 10 test sites, where these negative values were determined, were assessed for possible reasons for the negative model parameter. It was expected that sites having negative transmissivity would show the lowest basic infiltration rate (Machiwal *et al.*, 2006); however, the results did not prove this assumption.

The parameters of sorptivity and transmissivity accounted for the effects of factors such as macropores, initial soil water content, soil texture, and soil structure that affect infiltration (Sharma *et al.*, 1980). The variability of these soil factors highly influenced A and S . The results showed that the relationships between estimated sorptivity and estimated transmissivity were not significant ($R^2 = 0.31$) (Fig. 2). This is in agreement with Haghghi *et al.* (2010), who found a poor relationship between A and S ($R^2 = 0.127$). Talsma (1969) also found poor agreement between saturated hydraulic conductivity and sorptivity, which agrees with the present study.

In summer, A and S are good estimations of infiltration rates and are useful for planning irrigation systems and for management of soil and water resources necessary for precision agriculture. The findings of the present study can be used for planning and management of flood spreading areas in Iran.

The relationship between sorptivity and transmissivity indicated no distinct pattern in the study region. This finding is in agreement with results reported by Machiwal *et al.* (2006) and Haghghi *et al.* (2010). The

variation in soil effective porosity, pore size distribution and soil matric potential are important factors in the spatial variability of Philip's model A and S (Sharma *et al.*, 1980) and should be considered for spatial variability analysis of these parameters. The relationship between A and S and porosity is a topic for future study. In addition, non-uniform initial soil moisture within the test sites can cause appreciable variation in model parameters.

Geostatistical analysis

The R^2 values for estimation of transmissivity, sorptivity, and final infiltration rate were acceptable. This result agrees with the findings of Sepaskhah *et al.* (2005) who found that $R^2 = 0.81$ is acceptable only for estimation of sorptivity. Russo & Bresler (1981), Gupta *et al.* (1994) and Sepaskhah *et al.* (2005) reported variogram ranges of 35, 55 and 3.42 m for sorptivity, respectively, which proves that soil properties vary significantly at the different study locations.

Warrick & Nielsen (1980) and Ramírez-López *et al.* (2008) found that sorptivity showed medium variability, while the cumulative infiltration indicated high variability. The soil of their study area was an oxisol and the region experiences high temperatures and rainfall in excess of 2000 mm yr⁻¹, which contrasts with the present study. These parameters have demonstrated high variability in other studies (Rodríguez-Vásquez *et al.*, 2008; Cucunubá-Melo *et al.*, 2011).

The semi-variogram model for the three properties was Gaussian and spherical. The estimated sorptivity indicated a nugget effect (0.14), demonstrating discontinuity of the variogram close to the origin. Where the contour lines are intensive, the variability of values is more severe. The variability of the final infiltration rate was higher than for sorptivity and transmissivity (Fig. 3). The random behavior of this parameter can be attributed to variability of soil properties, although statistical analysis showed a nearly normal behavior for this attribute.

The spatial variability of soil physical properties (Russo & Bresler, 1981; Camarinha *et al.*, 2011), especially soil pore size distribution, are major factors in spatial variation of the final infiltration rate, Philip sorptivity and transmissivity (Sharma *et al.*, 1980; Machiwal *et al.*, 2006; Haghghi *et al.*, 2010) in the flood plain and control areas of the studied region. Hallett *et al.* (2004) stated that macro-pores and

repellency is the likely cause of severe spatial variability.

The estimated sorptivity and transmissivity and the measured final infiltration attributes showed a high degree of spatial dependence at 0.99, 0.81 and 1, respectively. The closeness of spatial dependence to one demonstrated the reliability of the fit of data to theoretical semi-variograms, which is necessary for the interpolation of variables in the contour maps (Orjuela-Matta *et al.*, 2012).

In conclusion, contour maps allow identification of soil sectors where differences in values of estimated water sorptivity and transmissivity and measured final infiltration rate exist. This identification helps to optimize irrigation management and to reduce surface runoff (Orjuela-Matta *et al.*, 2012). The results showed that the kriging estimator was able to estimate the sorptivity, transmissivity and final infiltration rate if the variables had spatial variability.

Selection of best-fit infiltration model and geostatistical analysis for water management

Selection of best infiltration model is a major component of irrigation efficiency. The present study showed that the Horton model can be used to adequately estimate the final infiltration rate in the study area. The Philip's sorptivity was site-dependent and varied widely between sampling points. Usually, in irrigation projects, a large amount of water is applied with low irrigation efficiency because of the spatial variability of soil hydraulic parameters such as transmissivity, sorptivity and final infiltration rate that influence the infiltration model. Dividing the area into sub-areas, each with a unique infiltration model, may result in better water management (Sepaskhah *et al.*, 2005). As shown, the contour lines for the studied parameters were intensive for the final infiltration rates compared to estimated transmissivity and sorptivity. In conclusion, dividing the areas into sub-areas with relatively similar final infiltration values and two other parameters may help to manage water properly and design an efficient irrigation system and flood spreading area plan. The use of kriging in large areas to extrapolate the values related to infiltration by generating contour maps can be a suitable tool for managing water resources and to partitioning the areas.

In the present study, the goodness of the fit of five models and their ability to estimate the final infil-

tration rate of soils was assessed for a flood spreading area in Ilam, Iran, using root mean squared error (RMSE). The results showed that the Horton model can be applied to estimate the final infiltration rate in the study area. The Kostiakov-Lewis model did not estimate the final infiltration rate at most sites. The spatial variability of the infiltration process was also analyzed. The spatial variability of the final infiltration rate, estimated sorptivity, and estimated transmissivity were evaluated for soil in the flood plain and in non-flooded, control conditions. The attributes were analyzed for spatial variability and contour and prediction maps were obtained by kriging for the parameters fitted to the theoretical models of the semi-variograms. It was found that final infiltration rate, estimated sorptivity and estimated transmissivity are variable parameters under field conditions.

The results showed that the final infiltration rate, estimated sorptivity, and estimated transmissivity had spatial distributions. The variograms ranged from 99 m and 88 m for estimated sorptivity and final infiltration rate and 384 m (Gaussian) for estimated transmissivity, respectively. The final infiltration rate, estimated sorptivity and estimated transmissivity showed high degrees of spatial dependence and 0.99, 0.81, and 1, respectively. Geostatistical analysis helped to identify the variability of final infiltration rate, estimated sorptivity and estimated transmissivity, and allowed prediction of them in non-sampled zones using kriging as an interpolation algorithm. It is suggested that the geostatistical approach obtains practical information that can aid in the management of water and soil resources in agricultural production and the operation of irrigation systems.

References

- Bouma J, 1989. Using soil survey data for quantitative land evaluation. In: *Advances in Soil Science* (Stewart BA, ed.), Vol 9, pp: 177-213. Springer-Verlag, NY.
- Bouwer H, Back JT, Oliver JM, 1999. Predicting infiltration and ground-water mounds for artificial recharge. *J Hydrol Eng* 4(4): 350-357.
- Burrough PA, 1993. Soil variability: a late 20th century view. *Soil Fertiliz* 56: 529-562.
- Camarinha PIM, Trannin ICB, Simes SJC, Bernardes GP, 2011. Fuzzy logic and geostatistical techniques for spatialization of soil texture in region with rough terrains. *Procedia Environ Sci* 7: 347-352.
- Cambardella CA, Moorman TB, Novak JM, Parkin TB, Karlen DL, Turco RF, Konopka AE, 1994. Field-scale

- variability of soil properties in Central Iowa Soils. *Soil Sci Soc Am J* 58: 1501-1511.
- Carvalho HO, Cassel DK, Hammond J, Bauer A, 1976. Spatial variability of in situ unsaturated hydraulic conductivity of Maddock sandy loam. *J Soil Sci* 121: 1-8.
- Comegna V, Vitale C, 1993. Space-time analysis of water status in a volcanic Vesuvian soil. *Geoderma* 60: 135-158.
- Cressie N, 1993. *Statistics for spatial data*, Rev. Ed. John Wiley & Sons, NY, USA. 928 pp.
- Cucunubá-Melo JL, Álvarez-Herrera JG, Camacho-Tamayo JH, 2011. Identification of agronomic management units based on physical attributes of soil. *J Soil Sci Plant Nutr* 11: 87-99.
- Green WH, Ampt GA, 1911. *Studies on soil physics, 1: The flow of air and water through soils*. *Agr Sci J* 4: 1-24.
- Grego CR, Vieira SR, 2005. Variabilidade espacial de propriedades físicas do solo em uma parcela experimental. *Revista Brasileira de Ciência Do Solo* 29: 169-177.
- Gupta RK, Rudra RP, Dickinson WT, Elrick DE, 1994. Modelling spatial patterns of three infiltration parameter. *Can Agric Eng* 36: 9-13.
- Haghighi F, Gorji M, Shorafa M, Sarmadian F, Mohammadi MH, 2010. Evaluation of some infiltration models and hydraulic parameters. *Span J Agric Res* 8: 210-217.
- Hallett PD, Numan, N, Douglas JT, Young IM, 2004. Millimeter-scale spatial variability in soil water sorptivity: scale, surface elevation, and subcritical repellency effects. *Soil Sci Soc Am J* 68: 352-358.
- Horton RE, 1940. An approach toward a physical interpretation of infiltration-capacity. *Soil Sci Soc Am Proc* 5: 339-417.
- Isaaks EH, Srivastava RM, 1989. *An introduction to applied geostatistics*. Oxford Univ. Press, NY.
- Jaynes RA, Gifford GF, 1981. An in-depth examination of the Philip equation for cataloging infiltration characteristics in rangeland environments. *J Range Manage* 34(4): 285-296.
- Jury WA, Gardner WR, Gardner WH, 1991. *Soil physics*, 5th Ed, John Wiley & Sons, NY. 328 pp.
- Kitanidis PK, 1997. *Introduction to geostatistics: applications to hydrogeology*. Cambridge Univ. Press, Cambridge, UK.
- Kostiakov AN, 1932. On the dynamics of the coefficient of water percolation in soils and on the necessity of studying it from a dynamic point of view for the purposes of amelioration. *Transactions of the 6th Cong Int Soc of Soil Science, Moscow. Russian Part A*. pp: 17-21.
- Machiwal D, Madan KJ, Mal BC, 2006. Modelling infiltration and quantifying spatial soil variability in a watershed of Kharagpur, India. *J Biosys Eng* 95(4): 569-582.
- Mbagwu JSC, 1993. Testing the goodness of fit of selected infiltration models on soils with different land use histories. *Int Atom Energ Agency and UN Educational Scientific and Cultural Organization, IC/93/290*. Univ. of Nigeria, Nsukka, Nigeria.
- Mezencev VJ, 1948. Theory of formation of the surface runoff. *Meteorol Gidrol* 3: 33-46. [In Russian].
- Mishra SK, Tyagi JV, Singh VP, 2003. Comparison of infiltration models. *Hydrol Process* 17: 2629-2652.
- Mulla DJ, McBratney AB, 2002. Soil spatial variability. In: *Soil physics companion* (Warwick AW, ed.). CRC Press, FL, USA. pp: 343-373.
- Navar J, Synnot TJ, 2000. Soil infiltration and land use in Linares, NL, Mexico. *Terra Latino Americana* 18: 255-262.
- Nielsen DR, Biggar JW, Erh KT, 1973. Spatial variability of field-measured soil-water properties. *Hilgardia* 42: 215-259.
- NRCS, 1974. *National engineering handbook, Section 15, border irrigation: Chapter 4. Natural Resources and Conservation Service, National Technical Information Service, Washington, DC, USA*.
- Orjuela-Matta HM, Sanabria YR, Camacho-Tamayo JH, 2012. Spatial analysis of infiltration in an oxisol of the eastern plains of Colombia. *Chilean J Agr Res* 72(3): 404-410.
- Peck AJ, Luxmoore RJ, Stolzy JL, 1977. Effects of spatial variability of soil hydraulic properties in water budget modelling. *Water Resour Res* 13: 348-354.
- Philip JR, 1957. The theory of infiltration: 4. Sorptivity and algebraic infiltration equations. *J Soil Sci* 84: 257-264.
- Philip JR, 1969. The theory of infiltration. *Adv Hydro Sci* 5: 215-296.
- Ramírez-López L, Reina-Sánchez A, Camacho-Tamayo JH, 2008. Variabilidad espacial de atributos físicos de un Typic Haplustox de los Llanos Orientales de Colombia. *Engenharia Agrícola* 28: 55-63.
- Ravi V, Williams JR, 1998. Estimation of infiltration rate in the vadose zone: compilation of simple mathematical models, Vol. I. US Environmental Protection Agency, EPA/600/R-97/128a, 26 pp.
- Rodríguez-Vásquez AF, Aristizábal-Castillo AM, Camacho-Tamayo JH, 2008. Variabilidad espacial de los modelos de infiltración de Philip y Kostiakov en un suelo Ándico. *Engenharia Agrícola* 28: 64-75.
- Russo D, Bresler E, 1981. Soil hydraulic properties as stochastic processes: I: An analysis of field spatial variability. *Soil Sci Soc Am J* 45: 682-687.
- Sepaskhah AR, Ahmadi SH, Nikbakht Shahbazi AR, 2005. Geostatistical analysis of sorptivity for a soil under tilled and no tilled conditions. *J Soil Till Res* 83: 237-245.
- Sharma ML, Gander GA, Hunt CG, 1980. Spatial variability of infiltration in a watershed. *J Hydrol* 45: 101-122.
- Shukla MK, Lal R, Unkefer P, 2003. Experimental evaluation of infiltration models for different land use and soil management systems. *J Soil Sci* 168 (3): 178-191.
- Singh VP, 1992. *Elementary Hydrology*. Prentice Hall: Englewood Cliffs, NJ, USA.
- Soleimani R, Kamali K, Azami A, Pirani A, Shafiee Z, 2011. The investigation of flood water spreading effects on the changes of soil infiltration rate in flood water spreading station of Musian report. *Soil Conservation and Watershed Management Research Institute, Tehran, Iran*.
- Swartzendruber D, Youngs EG, 1974. A comparison of physically-based infiltration equations, *T ASAE* 12: 822-828.

- Talsma T, 1969. In situ measurement of sorptivity. *Aust J Soil Res* 7: 269-276.
- Vieira SR, Nielsen DR, Biggar JW, 1981. Spatial variability of field-measured infiltration rate. *Soil Sci Soc Am J* 45: 1040-1048.
- Warrick AW, Nielsen DR, 1980. Spatial variability of soil physical properties in the field. In: *Applications of soil physics* (Hillel D, ed), Academic Press, NY. pp: 319-344.
- Webster R, Oliver MA, 2007. *Geostatistics for environmental scientists*. John Wiley & Sons, Hoboken, NJ, USA.
- Wollenhaupt NC, Mulla DJ, Crawford CAG, 1997. Soil sampling and interpolation techniques for mapping spatial variability of soil properties. In: *The state of site specific management for agriculture* (Pierce FJ; Sadler EJ, eds), Am Soc Agron, Madison, WI, USA. pp: 19-53.
- Yates SR, Warrick AW, 1999. Geostatistics and spatial variability of soil properties. In: *Agricultural drainage* (Skaggs RW, Van Schilfgaarde J, eds.). Agron Monograph no. 38, SSSA Publ., Madison, WI, USA. pp: 1235-1258.