

## A NEW COMBINATION IN *MAURANTHEMUM* (ASTERACEAE)

Nèstor TORRES<sup>1</sup>, Alexis J. MARAVILLA<sup>2</sup> & Josep A. ROSSELLÓ<sup>2</sup>

<sup>1</sup> C/Luci Oculaci 18, 4<sup>a</sup>, E-07800-Eivissa.

<sup>2</sup> Jardí Botànic, Unidad Asociada CSIC-ICBiBE, Universitat de València, C/Quart 80, E-46008-Valencia. rossello@uv.es

**ABSTRACT:** The analysis of the Western Balearic populations of *Maurantheum paludosum* subsp. *ebusitanum* (Vogt) Vogt & Oberpr. (≡ *Leucantheum paludosum* subsp. *ebusitanum* Vogt) supports their taxonomic recognition at the specific level. A new nomenclatural combination, *Maurantheum ebusitanum* (Vogt) N. Torres & Rosselló, is proposed. The distribution area of this species in Eivissa island is enlarged. **Key words:** Balearic Islands, Western Mediterranean, Asteraceae, endemic plant, Spain.

**RESUMEN:** El análisis de la variación morfológica de las poblaciones ibicencas de *Maurantheum paludosum* subsp. *ebusitanum* (Vogt) Vogt & Oberpr. (≡ *Leucantheum paludosum* subsp. *ebusitanum* Vogt) sugiere su reconocimiento taxonómico a nivel específico. Se propone la nueva combinación nomenclatural, *Maurantheum ebusitanum* (Vogt) N. Torres & Rosselló. **Palabras clave:** Islas Baleares, Mediterráneo occidental, Asteraceae, endemismo.

### INTRODUCTION

The presence of the genus *Maurantheum* Vogt & Oberpr. (Asteraceae) in the Balearic Islands is restricted to Eivissa and dates back to MARÈS & VIGINEIX (1880) who reported *M. decipiens* (Pomel) Vogt & Oberpr. (as *Hymmenostemma fontanesii* var. *pinatifidum* Cosson ex Willk.) Since then the Balearic plant has been considered to belong to the related *M. paludosum* (Poir) Vogt & Oberpr. (VOGT, 1991; VOGT & OBERPRIELER, 1995).

The small height of the individuals and size of the inflorescences, and the different leaf shape supported the recognition of the Balearic plant as an insular subspecies, *M. paludosum* subsp. *ebusitanum* (Vogt) Vogt & Oberpr. (≡ *Leucantheum paludosum* subsp. *ebusitanum* Vogt). However, these results were based on the study of very few herbarium collections collected from a single site (Puig d'en Serra)

and, accordingly, the range of variation in morphological features is unknown. In addition, and due to the lack of adequate sampling, the reduced distribution area of *M. paludosum* subsp. *ebusitanum* may be larger than that provided in the works dealing with this plant (MARÈS & VIGINEIX, 1880; FONT QUER, 1920, VOGT, 1991).

In this work we provide additional knowledge for this plant, based on extensive field prospections conducted in Eivissa, that allows a new taxonomic reinterpretation.

### TAXONOMIC TREATMENT

***Maurantheum ebusitanum*** (Vogt)  
N. Torres & Rosselló, comb. nova.

**Basionym:** *Leucantheum paludosum* subsp. *ebusitanum* Vogt, Ruizia 10: 293 (1991)

≡ *Maurantheum paludosum* subsp. *ebusitanum* (Vogt) Vogt & Oberpr., Taxon 44: 377 (1995)

**Holotype:** Eivissa, Puig d'en Serra, pradell, 350 m, 26-III-1918, Font Quer (BC 30256).

Annual plant, (4) 6-20(30) cm long, erect to ascendent, with one to several slender stems, glabrous. Basal leaves (2-6 long  $\times$  0.8-2 cm wide, fig. 1), oblong-spathulate, dentate, pinnatipartite to bipinnatisect; upper caulinar leaves sublinear to spatulate (fig. 2). Inflorescence up to 25 mm wide, heterogamous (fig. 1). Bracts 5-7 mm long, with a broad membranous margin and a black decurrent appendix (fig. 1). Ligulate flowers white, 5-11 mm long; tubulate flowers 2.5-3 mm long, yellow. Cypsela subcylindrical, slightly curved, with 7-10 ribs, without pappus; cypsela from ligulate flowers with a small crown at the apex. Flowering period from December to April.

Distribution: *Mauranthemum ebusitanum* shows a disjunct distribution in the island, in SW and N inland sites (fig. 3), in dry, therophytic pastures, rock crevices and calcareous outcrops.

**EIVISSA:** 31SCD4707, Sant Josep, Cala Vedella at Serreta de cas Pou, calcareous outcrops, 10-IV-2002, *N. Torres*; 31SCD4707, ibidem, 24-II-2016, *N. Torres*; 31SCD4805, Es Cubells, near Puig d'en Serra summit, calcareous rock crevices, 13-IV-1996/5-III-2000, *N. Torres*; 31SCD4805, Es Cubells, S face of Puig d'en Serra, 23-I-1999/10-III-2012, *N. Torres*; 31SCD4806, Es Cubells, near Puig d'en Serra, therophytic pastures, 7-III-1989, *N. Torres*; 31SCD4906, Es Cubells, therophytic pastures, west face of Puig d'en Serra, 21-III-1992/9-I-2016, *N. Torres*; 31SCD5008, Sant Josep, SSW face of Talaia de Sant Josep, pastures, 250 m a.s.l., 15-III-1992, *N. Torres*; 31SCD5008, ibidem, 21-IV-2002, 450 m a.s.l., *N. Torres*; 31SCD5009, Sant Josep, Talaia de Sant Josep at Cap de Fora, pastures, 15-III-1992/5-IV-2010, *N. Torres*; 31SCD5725, Santa Agnès, Ses Torretes, over Pas Estret, rock crevices, 9-III-1991, *N. Torres*; 31SCD5725, Sant Mateu, Cala d'Albarca at Sa Punta, calcareous crevices, 11-III-2006, *N. Torres*.

The shape and dissection of leaves in *M. ebusitanum* are clearly different from the related *M. paludosum* and *M. decipiens* (fig. 4).



Figure 1. A, B: *Mauranthemum ebusitanum*. C: *M. paludosum*. A: Capitule. B & C: Inflorescence bracts.

In addition, and based on the overall morphology of the leaves, it is suggested that the Balearic plant may be more closely related to *M. decipiens* than to *M. paludosum*, in agreement with the early determination of the Balearic plant made by MARÈS & VIGINEIX (1880). The shape of the whole bracts and the dimensions of the black decurrent appendix also discriminate *M. ebusitanum* from *M. paludosum* (fig. 1).

Until now, *M. ebusitanum* has been rarely collected and the species is poorly represented in herbarium collections (cf. VOGT, 1991). Thus, the lack of adequate material for study may be one of the underlying reasons why the Balearic plant has been included within *M. paludosum* (VOGT, 1991) without a correct weighting of the vegetative and floral features discriminant both entities.

**ACKNOWLEDGMENTS:** We thank Carmen Villar and Josep Miravet for kindly providing the pictures used in figure 1. We are grateful to Juan M. Mari and Jordi Vidal for the elaboration of the map included in figure 3.

## REFERENCES

- FONT QUER, P. (1920) *Compuestas de las Pitiusas*. *Bol. Soc. Esp. Hist. Nat.* 20: 141-159.
- MARÈS, P. & G. VIGINEIX (1880) *Catalogue raisonné de la flores vasculaires des îles Baléares*. G. Masson. Paris.
- VOGT, R. (1991) Die Gattung *Leucanthemum* (Compositae-Anthemideae) auf der Iberischen Halbinsel. *Ruizia* 10: 1-261.
- VOGT, R. & C. OBERPRIELER (1995) *Mauranthemum*, a new name for *Leucoglossum* B.H. Wilcox & al. non S. Imai (Compositae, Anthemideae). *Taxon* 44: 377-378.

(Recibido el 25-V-2017)  
(Aceptado el 24-VI-2017)

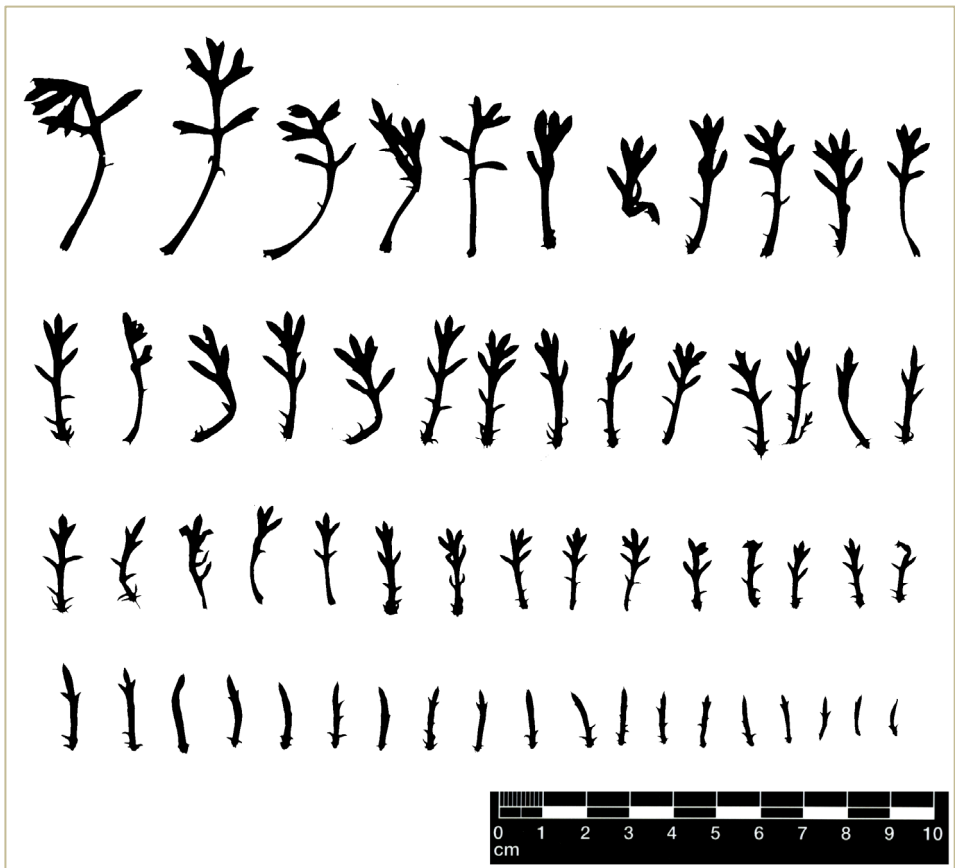


Figure 1. Sequential variation in leaf morphology within a single individual of *M. ebusitanum* (Eivissa, Es Cubells, Puig d'en Serra). Basal (top left) to upper caulinar leaves (bottom right) are shown.

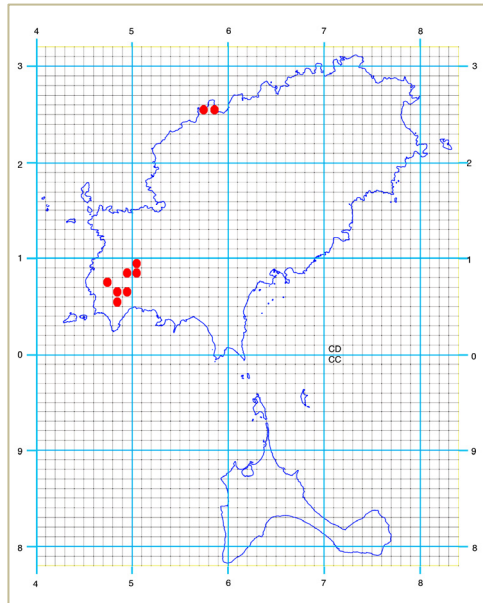


Figure 3. Distribution map of *M. ebusitanum* based on field records and herbarium specimens.

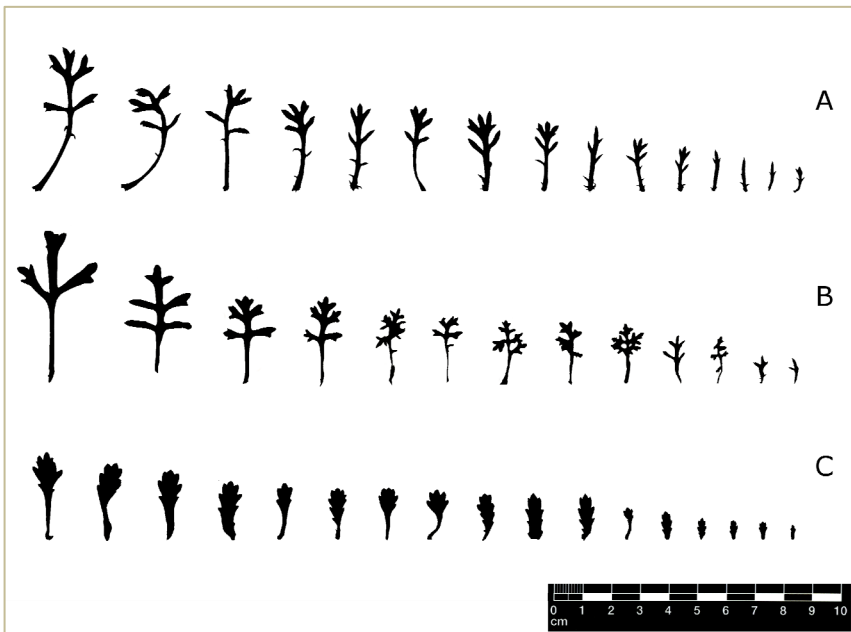


Figure 4. Leaf shape variation in *M. ebusitanum* (A), *M. decipiens* (B), and *M. paludosum* (C).

## Orquídeas de la provincia de Cuenca

*Guía de campo*

Agustín Coronado Martínez y Eduardo Soto Pérez

*Colección Guías imprescindibles de flora, 4*

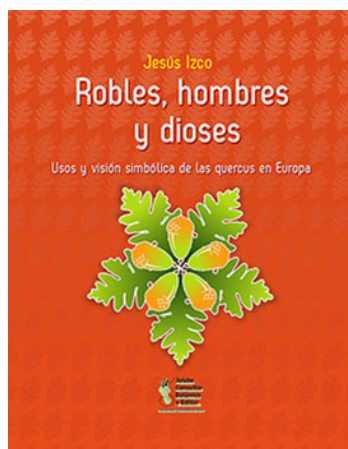
Encuadernación rústica cosida 14,8 × 21 cm

252 páginas en **COLOR**

Fecha lanzamiento: mayo de 2017

ISBN: 978-84-945880-5-1

PVP: 25,95€



## Robles, hombres y dioses

*Usos y visión simbólica de las quercus en Europa*

Jesús IZCO

*Monografías de Botánica Ibérica, nº 19*

Encuadernación rústica cosida 17 × 21,9 cm

424 páginas en color

Fecha lanzamiento: febrero de 2016

ISBN: 978-84-945880-3-7

PVP: 39,95€

## Los nombres comunes de las plantas

*Propuesta de unificación de los nombres comunes de la flora vascular del Sistema Ibérico y su entorno*

Gonzalo Mateo Sanz

*Monografías de Flora Montiberica, nº 7*

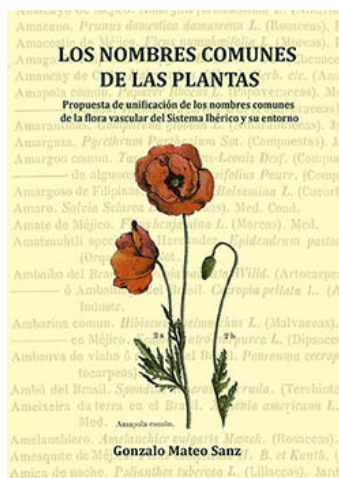
Encuadernación rústica cosida 17 × 24 cm

115 páginas en B/N

Fecha lanzamiento: diciembre de 2016

ISBN: 978-84-945880-2-0

PVP: 9,95€





## Rosas de Aragón y tierras vecinas

2ª edición corregida

Pedro MONTSERRAT, Daniel GÓMEZ,  
José V. FERRÁNDEZ y Manuel BERNAL

*Monografías de Botánica Ibérica*, nº 14

Encuadernación rústica cosida 21 × 27 cm

252 páginas en color

Fecha lanzamiento: diciembre de 2016

ISBN: 978-84-945880-1-6

PVP: 30€

## Actualización del catálogo de la flora vascular silvestre de Burgos, 2016

Juan A. ALEJANDRE, Javier BENITO  
AYUSO, Javier M. GARCÍA-LÓPEZ &  
Gonzalo MATEO, eds.

*Monografías de Botánica Ibérica*, nº 18.

Encuadernación rústica cosida A4

146 páginas en blanco y negro.

Primera edición: julio de 2016

ISBN: 978-84-941996-3-9.

PVP: 9,95 €



## Actualización del catálogo de la flora vascular silvestre de La Rioja

Juan A. ALEJANDRE, José A.  
ARIZALETA, Javier BENITO AYUSO &  
Gonzalo MATEO, eds.

*Monografías de Botánica Ibérica*, nº 17.

Encuadernación rústica cosida A4

106 páginas en blanco y negro.

Primera edición: abril de 2016

ISBN: 978-84-943561-7-9.

PVP: 9,50 €