

## Nitrogen and potassium in cover fertilization of cotton in latossols with different clay content

Liliane Oliveira Lopes<sup>1\*</sup>, Julian Junio de Jesus Lacerda<sup>1</sup>, Rafael Felipe Ratke<sup>1</sup>, Sammy Sidney Rocha Matias<sup>2</sup>, Márcio Cleto Soares de Moura<sup>3</sup>, Raphael Lira Araujo<sup>3</sup>

<sup>1</sup> Federal University of Piauí, Bom Jesus, PI, Brazil

<sup>2</sup> Piauí State University, Corente, PI, Brazil

<sup>3</sup> Federal University of Piauí, Teresina, PI, Brazil

\*Corresponding author, e-mail: liliane\_ol@hotmail.com

### Abstract

Nitrogen and potassium are the most extracted nutrients by cotton, making necessary the replacement by fertilization. Thus, the present study aimed to evaluate the cotton yield under different nitrogen and potassium doses as cover fertilization in latosols with different textures, in a 'Cerrado' biome area. The experiment was carried out at the Harmonia Farm, municipality of Sapezal – MT, Brazil. The experiment was carried out in a randomized blocks design, with four repetitions. Treatments were arranged in an incomplete fractional triple factorial scheme  $(3/4)4^2 \times 2$ , totaling 72 experimental units. The N doses consisted of 46, 69, 92 and 115 kg ha<sup>-1</sup> and the four K<sub>2</sub>O doses of 62, 93, 124 and 155 kg ha<sup>-1</sup>, with different combinations for the cover fertilization of the cotton crop, in two areas, one with 420 and other with 625 g kg<sup>-1</sup> of clay. Cotton yield depends on the soil clay content. Appropriate doses of N and K, applied together on cover can increase the cotton yield in 1508 kg ha<sup>-1</sup>, when compared to control. Under the experimental conditions, it is suggested the application of 78 kg ha<sup>-1</sup> of N and 155 kg ha<sup>-1</sup> of K<sub>2</sub>O as cover fertilization for a soil with 420 g kg<sup>-1</sup> of clay and 71 kg ha<sup>-1</sup> of N and 124 kg ha<sup>-1</sup> of K<sub>2</sub>O as cover fertilization on soils with the clay content of 625 g kg<sup>-1</sup>.

**Keywords:** fertilization, *Gossypium hirsutum* L, Soil texture

### Introduction

The cotton crop occupies about 2.5% of the world's arable land area and is responsible for the production of 33-36% of the consumed fiber (FAO & ICAC, 2013). It is a crop that adapts to hot-humid to sub-humid environments, in the tropics and subtropics, in different cropping systems, in soils with varied clay contents (Franzluebbers et al., 2012; Fultz et al., 2013; Kintche rt al., 2010).

In Brazil, approximately 94% of the area planted with cotton is located in the cerrado biome (CONAB, 2014). The Cerrado region is privileged, because it has adequate climatic conditions for cotton cultivation, as well as soils with flat topography, which facilitates

mechanization. However, it presents chemical limitations due to its low natural fertility, being necessary the soil fertilization to achieve the full productive potential of the crop (Souza et al., 2011).

In relation to macronutrients, the cotton crop is more demanding in potassium (K) and nitrogen (N), followed by calcium, magnesium, phosphorus and sulfur (Borin et al., 2015). Potassium is necessary for the growth and development of cotton plants, and has a substantial impact on increasing yield (Harper et al., 2012; Dong et al., 2010). The absorption of K by the cotton plant depends on several factors, among them, the genetic material, the K content in the soil, the

Received: 06 April 2016  
Accepted: 10 October 2016

fertilizer and the cultivation history of the area (Zhao et al., 2014; Pettigrew, 2008).

Nitrogen is the most widely used nutrient for cotton production (Yang et al., 2012; Bondada & Oosterhuis, 2013). In some cotton fields in Australia, Rochester (2011) reports the possibility of reducing 15-25% (equivalent to 50 kg ha<sup>-1</sup> of N) of the total amount applied, without loss of production. Thus, before the recommendation of nitrogen fertilizers, it is necessary to take into account, among other factors, the residual N of previous crops, aiming to increase the application efficiency (Devkota et al., 2013).

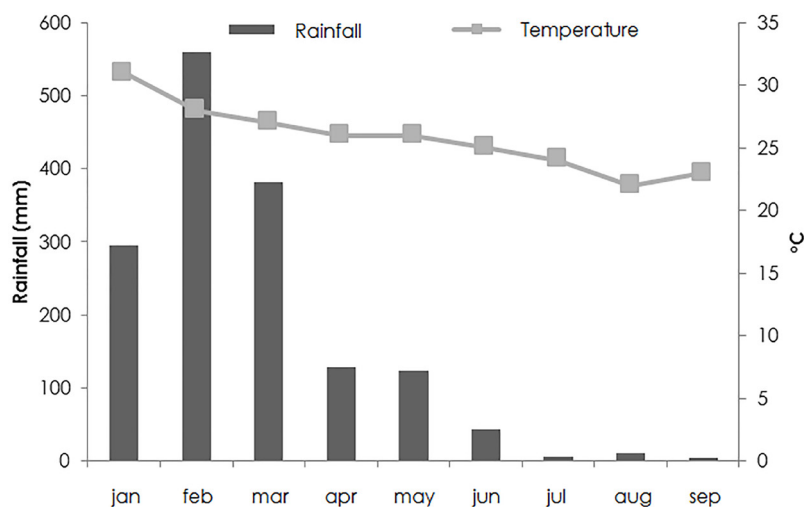
The availability of N and K in the soil is related to CEC, soil buffer power and nutrient transport to the roots, these factors depend directly on the soil contents of clay and organic matter (Ernani et al., 2007). In this context, associate the application of adequate N and K doses in the period of greater demand by

the cotton crop and considering the soil clay content can be a key approach to increase the crop yield.

Thus, the objective of the present study was to evaluate the crop yield under nitrogen and potassium doses in cover fertilization, in soils of different textures in the Cerrado biome area.

### Material and Methods

The study was carried out in commercial cotton farm, managed in the conventional system, at the Harmonia Farm, ABC Agrícola Group, distant approximately 38 km from the municipality of Sapezal-MT, Brazil. The geographical coordinates of the experimental area are 84° 71' 39.2" north latitude, 30° 97' 53.7" east longitude and 581 m of altitude. The monthly rainfall during the conduction of the experiment, from January to September 2014, is described in Figure 1.



**Figure 1.** Rainfall and temperature during the experiment. (Source: Harmonia Farm, Sapezal, MT, Brazil, 2014.)

The physical and chemical characterization of the soil in the two evaluated areas before the experiment conduction is described in Table 1. The soil of the two areas was classified as a red dystrophic latosol (Santos et al., 2013). The area 1 with 420, 460 and 120 g kg<sup>-1</sup> of clay, sand and silt, respectively, of clayey texture, presented the previous history of fallow for six months, followed by soybean cultivation. Area 2 with 625, 210 and 165 g kg<sup>-1</sup> of clay, sand and silt, respectively, with a very clayey texture, presented the previous history of succession growth of corn and soybean. The

soybean cultivated in the two areas in the year prior to the experiment (2013) was the TMG 123 variety, with a population of 350,000 plants ha<sup>-1</sup>. The fertilization used in this crop was based on the specialized advisor of the MT Foundation. A total of 62 kg ha<sup>-1</sup> of K<sub>2</sub>O (source KCl, with 62% of K<sub>2</sub>O) and 25 kg ha<sup>-1</sup> of sulfur (sulfugran, with 90% of S) were applied 30 days before planting, with 286 kg ha<sup>-1</sup> of single superphosphate (18% Ca, 11% S and 21% of P<sub>2</sub>O<sub>5</sub>) in the planting line.

The experiment was conducted in a randomized blocks design, with 3 repetitions. The treatments were arranged in a fractional

incomplete triple factorial (3/4)  $4^2 \times 2$ , totaling 72 experimental units. Four doses of N (46, 69, 92 and 115 kg ha<sup>-1</sup>) and four K<sub>2</sub>O doses (62, 93, 124 and 155 kg ha<sup>-1</sup>) were combined in cottonseed fertilization in two areas, with 420 and 625 g kg<sup>-1</sup> of clay. The fraction  $\frac{3}{4}$  refers to the removal of 4 combinations of N and K<sub>2</sub>O from the complete factorial, 69x155, 92x155, 115x93 and 115x124 kg ha<sup>-1</sup>, respectively. The description of the doses

and sources of nutrients used in the experiment is described in Table 2, being the first the control treatment (fertilization commonly used on the farm). The other treatments were equivalent to an increase of 1.5, 2.0 and 2.5 times the doses used by the farm. The plots consisted of six lines of 10 m in length, with 0.76 m of spacing between lines, resulting in an useful area of 45 m<sup>2</sup>.

**Table 1.** Soil chemical analysis before the experiment implementation.

Area 1											
Depth	P <sup>(1)</sup>	O.M. <sup>(2)</sup>	pH <sup>(3)</sup>	H+Al	Al <sup>3+</sup>	K <sup>+</sup> <sup>(1)</sup>	Ca <sup>2+</sup> <sup>(4)</sup>	Mg <sup>2+</sup> <sup>(4)</sup>	SB <sup>(5)</sup>	CEC <sup>(6)</sup>	V <sup>(7)</sup>
Cm	mg dm <sup>-3</sup>	g dm <sup>-3</sup>			cmol <sub>c</sub> dm <sup>-3</sup>						%
0-20	11.1	28	5.5	2.8	0	0.06	3.07	1.13	4.26	7.06	60.16
20-40	5.4	20	4.6	3.57	0.29	0.03	1.29	0.55	1.87	5.44	32.76
Area 2											
Depth	P <sup>(1)</sup>	O.M. <sup>(2)</sup>	pH <sup>(3)</sup>	H+Al	Al <sup>3+</sup>	K <sup>+</sup> <sup>(1)</sup>	Ca <sup>2+</sup> <sup>(4)</sup>	Mg <sup>2+</sup> <sup>(4)</sup>	SB <sup>(5)</sup>	CEC <sup>(6)</sup>	V <sup>(7)</sup>
Cm	mg dm <sup>-3</sup>	g dm <sup>-3</sup>			cmol <sub>c</sub> dm <sup>-3</sup>						%
0-20	8.4	34	4.8	5.05	0.20	0.09	2.18	0.85	3.12	8.17	37.50
20-40	1.6	22	4.3	4.79	0.56	0.05	0.69	0.33	1.07	5.85	18.01

<sup>(1)</sup> Mehlich-1 extractor. <sup>(2)</sup> Organic matter, Walkley-Black method. <sup>(3)</sup> CaCl<sub>2</sub> 0.01 mol L<sup>-1</sup>. <sup>(4)</sup> KCl 1 mol L<sup>-1</sup>. <sup>(5)</sup> Sum of bases. <sup>(6)</sup> Cation exchange capacity. <sup>(7)</sup> Bases saturation.

**Table 2.** Doses and sources of nutrients for each treatment.

Treatments	Dose of nutrient (Kg/ha)	Source	Dose fertilizer (kg ha <sup>-1</sup> )
1	46 of N and 62 of K <sub>2</sub> O	Urea + KCl	100 + 100
2	69 of N and 62 of K <sub>2</sub> O	Urea + KCl	150 + 100
3	92 of N and 62 of K <sub>2</sub> O	Urea + KCl	200 + 100
4	115 of N and 62 of K <sub>2</sub> O	Urea + KCl	250 + 100
5	46 of N and 93 of K <sub>2</sub> O	Urea + KCl	100 + 150
6	46 of N and 124 of K <sub>2</sub> O	Urea + KCl	100 + 200
7	46 of N and 155 of K <sub>2</sub> O	Urea + KCl	100 + 250
8	69 of N and 93 of K <sub>2</sub> O	Urea + KCl	150 + 150
9	92 of N and 124 of K <sub>2</sub> O	Urea + KCl	200 + 200
10	115 of N and 155 of K <sub>2</sub> O	Urea + KCl	250 + 250
11	69 of N and 124 of K <sub>2</sub> O	Urea + KCl	150 + 200
12	92 of N and 93 of K <sub>2</sub> O	Urea + KCl	200 + 150

Urea with 46% of N e KCl with 62% of K<sub>2</sub>O

The cotton cultivar used (*Gossypium hirsutum* L.) was FM 975 WS, with late cycle and resistant to the main crop larvae. Seeding was carried out in January, 2014 in the two areas, with 12 plants per linear meter. At 15 days after planting, a manual thinned was carried out to maintain the population of the experimental area with nine plants per linear meter (equivalent to 120 thousand plants ha<sup>-1</sup>). The cotton seeds were treated with Cropstar - 2.4 liters; Puri - 0.1 liters; Derosal Plus - 0.6 liters; Moceren 250 SC - 0.3 liters and Baytan - 0.2 liters, of the products for 100 kg of seeds.

The crop fertilization followed the procedures of commercial cultivation, in which

154 kg ha<sup>-1</sup> MAP (12% N and 52% P<sub>2</sub>O<sub>5</sub>) plus 100 kg ha<sup>-1</sup> of ammonium sulfate were applied to the sowing spot (21% of N and 23% of S). After 15 days of emergence, the fertilization was carried out with 90 kg ha<sup>-1</sup> of sulfur (source: sulfurgan, 90% of S) and granulated potassium with 62 kg ha<sup>-1</sup> of K<sub>2</sub>O (source KCl, with 62% of K<sub>2</sub>O) in the total area of the experiment, with the aid of a motorized equipment. It is noteworthy that the experiment was conducted in a first-year cotton area.

Nitrogen and potassium fertilization treatments were manually applied between the lines of the crop, and the doses were divided in two times at 33 and 66 days after emergence. Cultural treatments and phytosanitary

management of the experimental plots followed the same procedures adopted in commercial cotton farming, including insect and disease monitoring, chemical weed control, insecticide applications, fungicides and growth regulators. To evaluate the yield of the crop (lint and seed), at 180 days after sowing, it was discarded one line on each side of the plot and 1 m from the ends of the four central lines. The manual harvesting of all bolls was carried out in the useful area of each plot, being four lines with 8 m in length.

The data were submitted to variance analysis and when significant differences were found between the treatments by the F test at the 5% probability level, the regression analysis was performed. The multiple regression models for response surface graphs were performed using the lm function of the Stats package of the R software (R Foundation for Statistical Computing,

Vienna, Austria, 2008).

**Results and discussion**

There was a significant triple interaction between the applied doses of nitrogen and potassium and the soil clay content on cotton yield, which indicates the importance of the study of the response to fertilization for each soil, separately (Table 3). In the unfolding analysis, in both soils, the cotton yield did not differ as a function of the N doses when the highest K<sub>2</sub>O (155 kg ha<sup>-1</sup>) dose was applied. However, for K<sub>2</sub>O doses, there was no difference in yield with the combination of the higher N doses (92 and 115 kg ha<sup>-1</sup>), only in the soil with 625 g kg<sup>-1</sup> of clay (Table 3). The interaction between N and K is mentioned in the literature, in which the productivity response to the N application is lower when there is a low addition of K (Marschner, 2012).

**Table 3.** Summary of variance analysis for cotton yield (kg ha<sup>-1</sup>) as a function of the application of N and K<sub>2</sub>O doses in cover fertilization and the soil clay content.

Source of variation	Main anava			Unfolding Anava								
	DF	MS	Pvalue	DF	N Clay/K		QM	Pvalue	K Clay/N		QM	Pvalue
Block	2	18715	0.741	3	42	62	447395	0.000	42	46	226452	0.018
Clay	1	87951374	0.000	2	42	93	650474	0.000	42	69	224385	0.033
N	3	804884	0.000	2	42	124	971970	0.000	42	92	762076	0.000
K <sub>2</sub> O	3	592139	0.000	1	42	155	22816	0.546	42	115	1155448	0.000
Clay*N	3	516540	0.000	3	62	46	257366	0.011	62	46	202135	0.029
Clay*K <sub>2</sub> O	3	285239	0.007	2	62	93	598086	0.000	62	69	769160	0.000
N*K <sub>2</sub> O	5	455250	0.000	2	62	124	450204	0.002	62	92	123337	0.145
Clay*N*K <sub>2</sub> O	5	262662	0.003	1	62	155	75264	0.276	62	115	22570	0.549
Residue	46	61950					61950				61950	
Total	71											
Mean (kg ha <sup>-1</sup> )		3853,62										
CV %		6.46										

The N application significantly increased the cotton yield in the area with lower clay content. The yield presented quadratic behavior as a function of the N doses, when 62, 93 and 124 kg ha<sup>-1</sup> of K<sub>2</sub>O were applied. The maximum yield points of the equations are 2740, 3228 and 3528 kg ha<sup>-1</sup> of cotton, with the respective doses 70, 75 and 81 kg ha<sup>-1</sup> of N (Figure 2A). Thus, it is evident that the highest yield was obtained with the application of 81 kg ha<sup>-1</sup> of N and 124

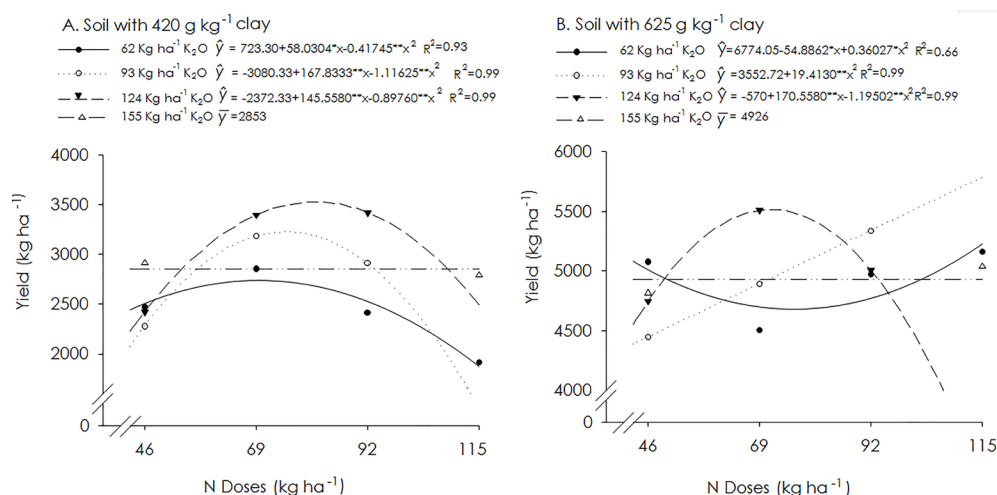
kg ha<sup>-1</sup> of K<sub>2</sub>O. Quadratic behavior is observed when there is abundant nutrient supply and an inversion of the tendency caused by nutrient toxicity or by the induced deficiency of another nutrient (Marschner, 2012). Excessive N uptake is not benefic for increasing the cotton yield because it promotes excessive vegetative growth (Yeates et al., 2010). The N levels in the soil left by the previous crop (soybean) may also have influenced the excess of N added (Geng

et al., 2015).

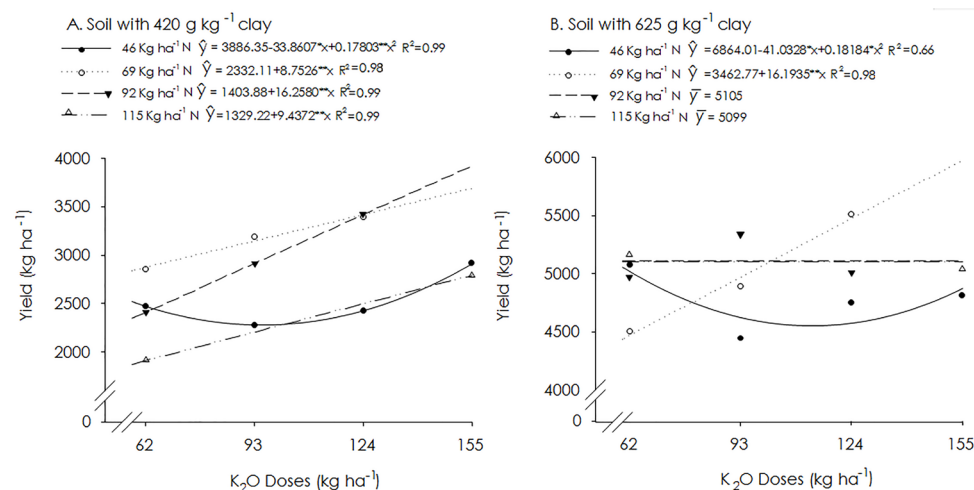
The cotton yield in the experiment with the highest clay content (625 g kg<sup>-1</sup>) increased linearly with the application of N when 93 kg ha<sup>-1</sup> of K<sub>2</sub>O was added. On the other hand, when the N doses were combined with a dose of 124 kg ha<sup>-1</sup> of K<sub>2</sub>O, there was a quadratic response, with a maximum of 5515 kg ha<sup>-1</sup> of cotton at the dose 71 kg ha<sup>-1</sup> of N (Figure 2B). Similar results were reported by Zhang et al. (2012) and Geng et al. (2015), which also obtained increasing productivity due to the application of N in cotton.

In the area with lower clay content,

cotton yield, as a function of K<sub>2</sub>O doses, a quadratic behavior was observed, at the lowest (46 kg ha<sup>-1</sup>) and the highest (115 kg ha<sup>-1</sup>) N dose. Intermediate doses (69 and 92 kg ha<sup>-1</sup> N) resulted in a linear increase in yield, which indicates the possibility of higher yields with increasing K<sub>2</sub>O doses up to 155 kg ha<sup>-1</sup> (Figure 3A). In the state of Goiás, Brazil, in an area with 560 g kg<sup>-1</sup> of clay, Bernardi et al. (2009) evaluated the application of K<sub>2</sub>O doses in the cotton crop and verified that the highest yield (4,172 kg ha<sup>-1</sup>) was obtained with the dose of 240 kg ha<sup>-1</sup> of K<sub>2</sub>O applied in the sowing furrow.



**Figure 2.** Cotton yield according to N doses for each K<sub>2</sub>O dose provided on soils with 420 g kg<sup>-1</sup> of clay (A) and with 625 g kg<sup>-1</sup> of clay (B).



**Figure 3.** Cotton yield according to K<sub>2</sub>O doses for each N dose provided on soils with 420 g kg<sup>-1</sup> of clay (A) and 625 g kg<sup>-1</sup> of clay (B).

In the area with higher clay content, there was a difference in yield according to the K<sub>2</sub>O doses, only when the lowest N doses (46 and 69 kg ha<sup>-1</sup> N) were applied. On the other hand, there was no difference in yield as a function of

K<sub>2</sub>O doses when the highest N doses (92 and 115 kg ha<sup>-1</sup> N) were used (Figure 3B).

An explanation for these results is the higher K buffer power in the soil with higher content of clay and organic matter, since theoretically it is



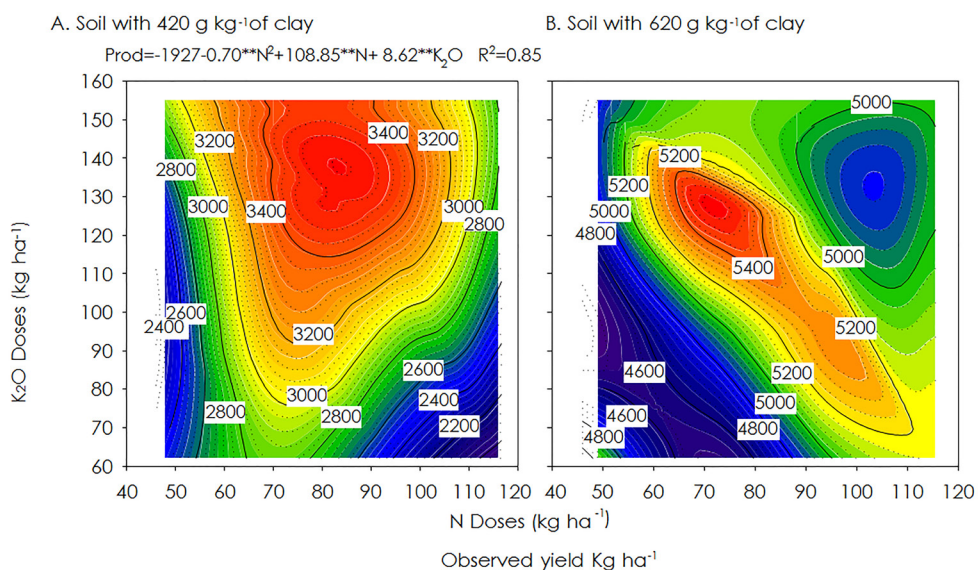
able to maintain a more stable concentration of K as the potassium fertilizer is added. In addition, the soil with higher clay content has a higher K amount than the area with a lower clay content, since the CEC and the percentage of potassium saturation are higher (Table 1) (Ernani et al., 2007). In addition, the K intensity in the soil, before application of the treatments, was higher than in the soil with 420 g kg<sup>-1</sup> of clay, since the available K content was classified as medium, while in the soil with lower clay content it was classified as low (Sousa and Lobato, 2004).

The management history of the experiment areas explains the higher availability of K in the area with higher clay content, because the cotton was cultivated after corn-soybean succession, while in the area with lower clay content the cotton was grown after a fallow-soybean succession. So corn straw may have provided additional K by cycling the nutrient in the area with the highest clay content. The K ion is predominantly in the plant as free cation and can be easily leached from plant tissues that cover the soil (Marschner, 2012). Crop rotation increases soil cover and consequently can increase the organic matter content in cotton production systems (Senapati et al., 2014).

Analyzing the dynamics of some soil attributes, Borin et al. (2015) suggests that a suitable soil for cotton cultivation in the 'Cerrado' region should have an average O.M. between

15 and 30 g dm<sup>-3</sup>. In the two studied areas, values close to those recommended by the author (Table 1) were observed, however, the soil with the highest O.M. content resulted in highest yields. Among the beneficial effects of the soil organic matter, it is important to highlight the soil microorganism stimulation, soil physical conditioning, biological and chemical buffering, thermal control and better water retention (Boulal et al., 2011). Thus, the higher O.M. content in the area with higher clay content may also have contributed to a more efficient utilization of K fertilizers and higher yields.

The study of the response surface of cotton yield in the two areas showed that the yield varied from 1914 to 3422 kg ha<sup>-1</sup> in the area with 420 g kg<sup>-1</sup> of clay. However, in the area with 625 g kg<sup>-1</sup> of clay, the yield ranged from 4446 to 5509 kg ha<sup>-1</sup>, confirming the yield difference in areas with different clay contents (Figure 4). Yield response curves are strongly influenced by interactions between nutrients and other growth factors. In field conditions, interactions between water availability and N supply are particularly important. Lower yields, even with adequate nutrient supply, may be caused by the delay of the stomata opening in response to water deficiency, higher water consumption and water deficit in vegetative stages and also by the increase of the shoot growth rate when compared to root (Marschner, 2012).



**Figure 4.** Response surface for cotton yield on soil with 420 g kg<sup>-1</sup> of clay (A) and with 625 g kg<sup>-1</sup> of clay (B) according to nitrogen and potassium doses provided on cover fertilization.

The relationship between soil texture and crop yield is considered in some research studies (Bedin et al., 2003; Klein et al., 2010), which highlight the high correlation of this soil physical characteristic with yield and its importance for the land evaluation for agricultural use. Cotton yields in both areas were higher than the national average of 2,998 kg ha<sup>-1</sup> in the 2013/14 crop years (Conab, 2014).

Based on the mathematical equation, the maximum yield of the area with the lowest clay content (420 g kg<sup>-1</sup>) was verified with the application of 78 kg ha<sup>-1</sup> of N and 155 kg ha<sup>-1</sup> of K<sub>2</sub>O in cover fertilization (Figure 3A). Evaluating the combined application of N and K doses during two years, Dong et al. (2010) obtained cotton yield variation from 1451 to 2087 kg ha<sup>-1</sup>. The authors also noticed a significant increase in cotton yield as a function of nitrogen and potassium fertilization.

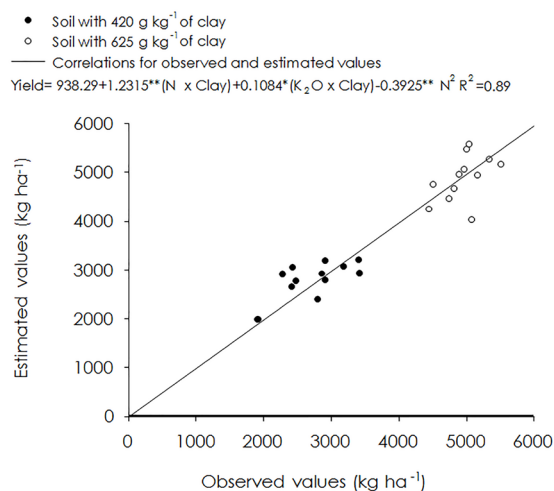
In the soil with higher clay content (Figure 3B) differences were observed between the treatments by the F test at 5% of probability, but the mathematical models studied did not represent significantly the response behavior in cotton yield as a function of the two applied nutrients. For this reason, a multiple regression model was not presented, so Figure 3B shows only the response surface of the values observed in the field without the mathematical model.

The highest yields observed in the treatments containing N and K together in adequate doses in the areas with different clay

content could be explained by the demand, function and interaction of these nutrients. N is a nutrient absorbed in large quantities by cotton, which accumulates during its cycle from 50 to 85 kg of N to produce one ton of cotton (Rochester, 2007). Photosynthesis is strongly reduced in plants deficient in N and K. Potassium nutrition affects photosynthesis mainly because of K's function in the regulation of stomata opening, which interferes with the assimilation of CO<sub>2</sub>. On the other hand, the excess supply of K can cause a consumption without need, with possible interference in the absorption and availability of Ca and Mg (Marschner, 2012). As N or K deficiency becomes more severe in cotton, there may be yield losses, as there is a synergistic effect between the two nutrients (Borin et al., 2015).

The coefficient of determination of 0.89 in the multiple regression model with the variables N, K and clay content indicates that clay variation interferes with cotton yield (Figure 4). According to Klein et al. (2010) description, the higher the clay content, the higher the cotton yield. Therefore, it is necessary to make a recommendation for nitrogen and potassium fertilization, taking also into consideration the clay content present in the soil, as it directly influences the cation exchange capacity (CEC) and the availability of these nutrients in the soil.

Studies indicate that the N doses in fertilization to achieve the higher potential yield of the crop should take into consideration the soil type (Yang et al., 2012; Luo et al., 2010). The



**Figure 4.** Correlation between observed and estimated values for cotton yield using a linear multiple model, considering N and K<sub>2</sub>O doses and clay contents.

adequate use of soil chemical and physical analysis for the application of K fertilizers is important because it allows higher economic savings (Harper et al., 2012). The results of the present study are in accordance to literature and affirm the importance of taking into consideration the clay content in the expectation of cotton yield and for the greater efficiency of the use of nitrogen and potassium fertilizers in the crop.

### Conclusions

1. The cotton yield depends on the clay content of the soil.

2. Appropriate doses of N and K applied together in cover fertilization increase up to 1508 and 1063 kg ha<sup>-1</sup> the cotton yield in soils with 420 and 625 g kg<sup>-1</sup> of clay, respectively.

3. In the experiment conditions it is suggested the application of 78 kg ha<sup>-1</sup> of N and 155 kg ha<sup>-1</sup> of K<sub>2</sub>O in cover in soils with clay content of 420 g kg<sup>-1</sup> and 71 kg ha<sup>-1</sup> of N and 124 kg ha<sup>-1</sup> of K<sub>2</sub>O in cover in soils with clay content of 625 g kg<sup>-1</sup>.

### Acknowledgments

The authors would like to thank CAPES for the scholarship to the first author, ABC Agrícola for funding the experiment and for the researchers of the MT Foundation for the technical support

### References

Bedin, I., Furtini Neto, A.E., Resende, A.V., Faquin, V., Tokura, A.M., Santos, J.L. 2003. Fertilizantes fosfatados e produção da soja em solos com diferentes capacidades tampão de fosfato. *Revista Brasileira de Ciência do Solo* 27:639- 646.

Bernardi, A.C. de C., Oliveira Júnior, J.P. de, Leandro, W.M., Mesquita, T.G. da S., Freitas, P.L. de, Carvalho, M. da C.S. 2009. Doses e formas de aplicação da adubação potássica na rotação soja, milho e algodão em sistema plantio direto. *Pesquisa Agropecuária Tropical* 39: 158-167.

Bondada, B.R., Oosterhuis, D.M. 2013. Canopy photosynthesis, specific leaf weight, and yield components of cotton under varying nitrogen supply. *Journal of Plant Nutrition* 3: 469-477.

Borin, A.L.D.C., Carvalho, M. da C.S., Ferreira, G.B. 2015. Nutrição, calagem e adubação do algodoeiro. In: Freire, E.C. *Algodão no cerrado do Brasil*. Editora Positiva, Brasília-DF, Brasil. p. 485-531.

Boulal, H., Gómez-Macpherson, H., Gómez, J.A., Mateos, L. 2011. Effect of soil management and traffic on soil erosion in irrigated annual crops. *Journal Soil & Tillage Research* 115: 62-70.

CONAB- Companhia nacional de abastecimento. Acompanhamento da safra brasileira de grãos 2013/2014, 101p. 2014. [http://www.conab.gov.br/OlalaCMS/uploads/arquivos/14\\_06\\_10\\_12\\_12\\_37\\_boletim\\_graos\\_junho\\_2014.pdf](http://www.conab.gov.br/OlalaCMS/uploads/arquivos/14_06_10_12_12_37_boletim_graos_junho_2014.pdf). <Acesso em 30 jul. 2015>.

Devkota, M., Martius, C., Lamers, J.P.A., Sayre, K.P., Devkota, K.P., Vlek, P.L.G. 2013. Tillage and nitrogen fertilization effects on yield and nitrogen use efficiency of irrigated cotton. *Journal Soil & Tillage Research* 134: 72-82.

Dong, H., Kong, X., Li, W., Tang, W., Zhang, D. 2010. Effects of plant density and nitrogen and potassium fertilization on cotton yield and uptake of major nutrients in two fields with varying fertility. *Journal Field Crops Research* 119: 106-113.

Ernani, P.R., Almeida, J.A., Santos, F.C. 2007. Potássio. In: Novais, R.F., Alvarez, V.H., Barros, N.F., Fontes, R.L.F., Cantarutti, R.B., Neves, J.C.L. *Fertilidade do solo*. Sociedade Brasileira de Ciência do Solo (SBCS/UFV), Viçosa-MG. p. 551-594.

FAO, Food and Agriculture Organization of the United Nations & ICAC, World Apparel Fibre Consumption Survey. Food and Agriculture Organization of the United Nations/International Cotton Advisory Committee, Washington, DC. 2013. <https://www.fao.org.br>. <Acesso em 24 Jul. 2015>.

Franzluebbers, A.J., Hubbs, M.D., Norfleet, M.L., 2012. Evaluating soil organic carbon sequestration potential in the Cotton Belt with the soil conditioning index. *Journal Soil Water Conservation* 67: 378-389.

Fultz, L.M., Moore-Kucera, J., Zobeck, T.M., Acosta-Martínez, V., Wester, D.B., Allen, V.G., 2013. Organic carbon dynamics and soil stability in five semiarid agroecosystems. *Journal Agriculture Ecosystems & Environment* 181: 231-240.

Geng, J., Ma, Q., Zhang, M., Li, C., Liu, Z., Lyu, X., Zheng, W. 2015. Synchronized relationships between nitrogen release of controlled release nitrogen fertilizers and nitrogen requirements of cotton. *Journal Field Crops Research* 184: 9-16.

Harper, D. C., Lambert, D. M., Larson, J. A., Gwathmey, C. O. 2012. Potassium carryover dynamics and optimal application policies in cotton production. *Journal Agricultural Systems* 106: 84-93.

Kintche, K., Guibert, H., Sogbedji, J.M., Leveque, J., Tiftonell, P. 2010. Carbon losses and primary



- productivity decline in savannah soils under cotton-cereal rotations in semiarid Togo. *Journal Plant and Soil* 336: 469–484.
- Klein, V.A., Baseggio, M., Madalosso, T., Marcolin, C.D. 2010. Textura do solo e a estimativa do teor de água no ponto de murcha permanente com psicrômetro. *Ciência Rural, Santa Maria* 40: 1550-1556.
- Luo, X., Chen, B., Zhang, J., Jiang, P. 2010. Effect of nitrogen applied levels on the dynamics of biomass, nitrogen accumulation of cotton plant in different soil textures. *Journal of Soil Science* 41: 904–910
- Marschner, P. 2012. *Marschner 's mineral nutrition of higher plants*. 3<sup>o</sup>ed. New York, Academic Press 651p.
- Pettigrew, W.T., 2008. Potassium influences on yield and quality production formaize, wheat, soybean and cotton. *Physiologia Plantarum* 133: 670–681.
- R Development Core Team. 2008. R: A language and environment for statistical computing. R Foundation for Statistical Computing, Vienna, Austria. ISBN 3-900051-07-0, URL <http://www.R-project.org>.
- Rochester, I.J. 2007. Nutrient uptake and export from an Australian cotton field. *Nutrient Cycling in Agroecosystems* 77:213-223.
- Rochester, I.J., 2011. Assessing internal crop nitrogen use efficiency in high-yielding irrigated cotton. *Nutrient Cycling in Agroecosystems* 90:147–156.
- Santos, H.G. dos; Jacomine, P.K.T.; Anjos, L.H.C. dos; Oliveira, V.A. de; Lumbreras, J. F.; Coelho, M.R.; Almeida, J. A. de; Cunha, T.J.F.; Oliveira, J.B. de. *Sistema brasileiro de classificação de solos*. Brasília: Embrapa, 2013. 353p.
- Senapati, N., Hulugalle, N.R., Smith, P., Wilson, B.R., Yeluripati, J.B., Daniel, H., Ghosh, S., Lockwood, P. 2014. Modelling soil organic carbon storage with RothC in irrigated Vertisols under cotton cropping systems in the sub-tropics. *Journal Soil & Tillage Research* 143: 38-49.
- Sousa, D.M.G., Lobato, E. 2004. *Cerrado: correção do solo e adubação*. Planaltina-GO, Embrapa Cerrados, 416p.
- Souza, R. de F., Leandro, W.M., Silva, N.B. da, Cunha, P.C.R. da, Ximenes, P.A. 2011. Diagnose nutricional pelos métodos dris e faixas de concentração para algodoeiro cultivado sob cerrado. *Pesquisa Agropecuária Tropical* 41: 220-228.
- Yang, G., Tang, H., Tong, J., Nie, Y., Zhang, X. 2012. Effect of fertilization frequency on cotton yield and biomass accumulation. *Journal Field Crops Research* 125: 161-166.
- Yeates, S.J., Constable, G.A., Mccumstie, T. 2010. Irrigated cotton in the tropical dryseason. II: biomass accumulation, partitioning and RUE. *Journal Field Crops Research* 116: 290–299.
- Zhang, D.M., Li, W.J., Xin, C.S., Tang, W., Eneji, A.E., Dong, H.Z. 2012. Lint yield and nitrogen use efficiency of field-grown cotton vary with soil salinity and nitrogen application rate. *Journal Field Crops Research* 138: 63–70.
- Zhao, S., He, P., Qui, S., Jia, L., Liu, M., Jim, J., Johnston, A.M. 2014. Long-term effects of potassium fertilization and straw return on soilpotassium levels and crop yields in north-central China. *Journal Field Crops Research* 169: 116-122.