

Effect of photocatalytic pretreatment of potato starch for bioethanol production using *Saccharomyces cerevisiae* during simultaneous saccharification-fermentation (SSF)

Andrés Felipe López-Vásquez, Martha Isabel Cobo-Angel & Jose Daniel Convers-Sánchez

Energy, Materials, and Environment Laboratory, Chemical Engineering Department, Universidad de La Sabana, Chia, Cundinamarca, Colombia.
andreslv@unisabana.edu.co, martha.cobo@unisabana.edu.co, jose.convers@unisabana.edu.co

Received: June 6th, 2018. Received in revised form: January 15th, 2019. Accepted: February 19th, 2019.

Abstract

In this study, the effect of photocatalytic (PC) pretreatment of potato starch with TiO₂ during the gelatinization (GE) stage of a simultaneous saccharification-fermentation (SSF) process for bioethanol production was evaluated. The maximum amounts of reducing sugars were 119.3, 114.6 and 104.8 g l⁻¹ for PC→GE, GE→PC and the reference (without PC), respectively, while bioethanol concentration gradually increased to a maximum amount of 128.21, 106.74 and 85.91 g l⁻¹ after 30 h for PC→GE, GE→PC and the reference (without PC), respectively. Although enzymatic activity (v_{max}) for each treatment was similar, in the reference (without PC pretreatment) it did not promote rapid substrate conversion into ethanol, despite showing the higher affinity enzyme-substrate (K_m). Considering traditional potato starch hydrolysis, PC pretreatment shortened the reaction time of the biological reactions. Thus, the PC pretreatment of potato starch for bioethanol production could be an environmentally feasible process without the addition of acid and alkali.

Keywords: bioethanol; photocatalytic pretreatment; potato starch.

Efecto del pretratamiento fotocatalítico de almidón de papa para la producción de bioetanol utilizando *Saccharomyces cerevisiae* durante fermentación-sacarificación simultánea

Resumen

En este estudio, se evaluó el efecto del pretratamiento fotocatalítico (PC) con TiO₂ durante la etapa de gelatinización (GE) en un proceso simultáneo de sacarificación-fermentación (SSF) del almidón de papa para la producción de bioetanol. La cantidad máxima de azúcares reductores fue 119.3, 114.6 y 104.8 g l⁻¹ para PC → GE, GE → PC y referencia (sin PC), respectivamente mientras que la concentración de bioetanol aumentó gradualmente hasta una cantidad máxima de 128.21, 106.74 y 85.91 g l⁻¹ después de 30 h, para PC → GE, GE → PC y referencia (sin PC). Aunque la actividad enzimática (v_{max}) para cada tratamiento fue similar, sin PC (referencia) no se promovió la conversión de sustrato en etanol, a pesar de mostrar mayor afinidad (K_m) con el sustrato enzimático. Considerando la hidrólisis tradicional de almidón de papa, PC disminuyó el tiempo de las reacciones biológicas. Así, el pretratamiento fotocatalítico de almidón de papa para la producción de bioetanol podría ser un proceso factible ambientalmente sin adición de ácido ni álcali.


Palabras clave: bioetanol; pretratamiento fotocatalítico, almidón de papa.

1. Introduction

Bioethanol production by the transformation of biological resources such as corn, sugarcane, and sugar beet or sorghum or via hydrolytic pretreatment of lignocellulosic biomass as second-

generation source (2G) followed by enzymatic conversion [1] is a promising alternative for fossil fuels [2]. In this sense, feedstock such as barley, wheat, rice, and tuber crops (i.e., potato and sweet potato) may serve as better options since they are more abundant and can be acquired at a lower cost [3-6].

How to cite: López-Vásquez, A.F., Cobo-Angel, M.I. and Convers-Sánchez, J.D., Effect of photocatalytic pretreatment of potato starch for bioethanol production using *Saccharomyces cerevisiae* during simultaneous saccharification-fermentation (SSF). DYNA, 86(208), pp. 251-256, January - March, 2019

© The author; licensee Universidad Nacional de Colombia. 
Revista DYNA, 86(208), pp. 251-256, January - March, 2019, ISSN 0012-7353
DOI: <http://doi.org/10.15446/dyna.v86n208.72695>

The potato is a potential feedstock for ethanol production due to its high starch content (approximately 80%) and a yield that is two to three times higher than that of fermentable sugars such as field corn [7,8]. Moreover, potatoes have many agronomic features, including high multiplication rate, drought resistance, and low degeneration rates of the planting material [9,10]

Because starch is an important substrate for the fermentation process, researchers have investigated a two-stage process for potato starch saccharification with acid pretreatment and enzymatic hydrolysis for ethanol production [11-13] and for the production of hydrolysates such as maltose and glucose [14-21], whose distribution depends on the acidic/enzymatic conditions of the process. These previous processes produced a solid insoluble fraction of cellulose and fibers and a liquid fraction composed of soluble sugars (mainly glucose), which is used in submerged fermentation to produce metabolites.

Although the process has been well defined, the conversion of insoluble starch granules into polymer fragments and its subsequent breaking into reducing sugars (saccharification) suffers from certain technological inconveniences, such as successive pH and temperature changes to maximize the hydrolytic enzymatic system, which results in an increased consumption of energy and auxiliary materials used in the purification of hydrolysates [14]. However, an option for overcoming these difficulties could be the use of a single-stage method for starch hydrolysis using a simultaneous saccharification-fermentation (SSF) process. Another important limitation during the process, is the generation of undesirable branch points during liquefaction, such as α -1,6-glycosidic links (4-6%), which must also be cleaved to complete hydrolysis; however, they are not attacked by the enzymatic system, because most hydrolytic enzymes are specific for α -1,4-glycosidic links [22-24].

Whereas photocatalytic (PC) pretreatment has been used to transform organic waste [25-28] and complex structures such as lignocellulose [29], its application for modifying starchy materials used for bioethanol production by OH• radicals participation, has rarely been reported. In this work, the effect of PC treatment, with TiO₂ before and after the gelatinization (GE) process during SSF, on bioethanol production from potato starch was tested (Fig. 1).

2. Materials and methods

A commercial sample of industrial potato starch (Almicor, Bogotá, Colombia) with a water content of 8.3% and 97.0% starch was used. HCl (Carlo Erba, Italy) and NaOH (Merck, Germany) solutions were used for pH adjustment during each stage.

For photocatalytic pretreatment, TiO₂ (Degussa-P25) was used. The commercial enzymes for liquefaction (Liquozyme SC, 167 kilo Novo α -amylase unit KNU ml⁻¹) and for saccharification (Spirizyme Fuel, 953 Novo glucoamylase unit AGU ml⁻¹) were purchased from Novozymes, USA [30]. Immobilized yeast cells of dry *S. cerevisiae* (Fermentis, Ethanol Red, France) in Ca-alginate gel beads were employed for reducing sugar fermentation. Typically, a 4%

sodium alginate sterile solution (weight fraction) was mixed with an *S. cerevisiae* (YSC1, Sigma) suspension (30 mg dry biomass ml⁻¹ alginate solution) and extruded through a needle (21 G) into a flask containing 0.1 M CaCl₂ sterile solution at 25°C to form microspheres, which were moderately shaken for 30 min [31]. (NH₄)₂HPO₄, MgSO₄·7H₂O and KH₂PO₄ (Merck, analytical grade, Germany) were used as nutrients during the fermentation process.

2.1. Photocatalytic (PC) pretreatment experiments

PC treatment was applied before and after the gelatinization stage (GE) using TiO₂ Degussa P-25 with photocatalytic activity. For the PC→GE pretreatment, 200 ml of potato starch-water suspension (~17%) was mixed with TiO₂ for 15 min to obtain a homogeneous paste (0.1 g TiO₂ g starch⁻¹). A sample, was spread in a thin layer on a glass plate, covered by another glass plate and subsequently irradiated for 5.0 h in a solid state from above the plates by a black-light blue fluorescent lamp (λ =360 nm, Phillips, Germany). Then, the sample was isothermally incubated at 90°C with mechanical shaking at 350 rpm for 60 min (GE). For the GE→PC pretreatment, 200 ml of potato starch-water suspension with the same characteristics was subjected to GE (90°C, 350 rpm, 60 min). After the incubation, the suspension was mixed with TiO₂ to obtain a paste (0.1 g TiO₂ g⁻¹ gelatinized starch), which was irradiated under the same conditions described above.

2.2. Liquefaction

All of the resulting mash after PC pretreatment, without separation of TiO₂ [29], was stabilized at 60°C and pH 5.8 [32] and mixed with 10.0 ml l⁻¹ Liquozyme SC (5.6 KNU g l⁻¹). The mixture, containing approximately 51.0 g l⁻¹ total solids, was liquefied at 83°C for 2.0 h. The enzyme activity was inactivated by adjusting the pH (~4.3) with 1.0 M HCl. Aliquots of the supernatant were separated by centrifugation (8000 rpm for 5 min) and used to determine reducing sugar content using a DNS method, relative to a glucose standard curve. The dextrose equivalent (DE) value for the treatments was calculated as the amount of reducing sugars (g) expressed as a percentage of the initial dry matter (g) according to the following equation (eq. 1):

$$DE = \frac{[RS]}{[IDM]} \times 100 \quad (1)$$

where *RS* and *IDM* are the reducing sugar and initial dry matter concentrations, respectively. Prior to the SSF process, the liquefied mash was cooled at room temperature for 1.0 h. Deionized water was added to adjust the total solids to approximately 0.4 g l⁻¹. The final pH of the liquefied mash was 4.5-4.7, and no further pH adjustment was made.

2.3. Simultaneous saccharification and fermentation (SSF)

Batch scale ethanol fermentation of the liquefied mash was performed under SSF conditions after the liquefaction step.

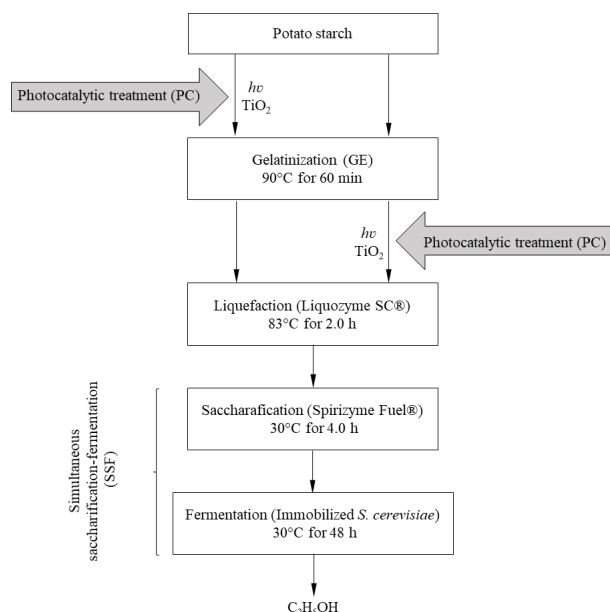


Figure 1. Enzymatic processes for bioethanol production from potato starch involving PC pretreatment before (PC→GE) and after (GE→PC) the gelatinization stage.

Source: The authors

The liquefied suspension was dispensed into an Erlenmeyer flask with a rubber stopper [33-36]. Saccharification was then initiated by adding Spirizyme Fuel (1.5 ml l⁻¹, 2.27 AGU g⁻¹ available starch), 6.0 g l⁻¹ (NH₄)₂HPO₄, 2.0 g l⁻¹ MgSO₄·7 H₂O, 3.0 g l⁻¹ KH₂PO₄ and an inoculum of yeast immobilized microspheres (8.0 g l⁻¹) [37]. The final total solids content of the mixture was approximately 0.42-0.45 g l⁻¹, providing an available glucose concentration of 0.36-0.38 g l⁻¹. SSF was performed over 48 h at 30°C, with an initial pH of 4.5-4.7 and a shaker speed of 150 rpm. The ethanol concentration was monitored at 6.0-h intervals. The kinetic parameters for the bioreactor design, such as maximum specific growth rate (v_{max}) and the Michaelis-Menten constant (K_m), were estimated based on a mathematical model that describes the estimation of substrate conversion per unit time in a batch reactor [38-41]. A reference experiment was carried out without PC pretreatment, to compare the effect of TiO₂ on SSF of potato starch for bioethanol production. All experiments were conducted in triplicate.

2.4. Analytical methods

The fermentable sugar content was determined by acid hydrolysis in which the samples were treated with HCl at 100°C for 2 h and the amount of reducing sugar was measured by the DNS method (3,5-dinitro salicylic acid) using glucose as the standard [42] in a Lambda 750 UV/Vis/NIR Spectrophotometer (Perkin Elmer, USA). All measurements were recorded at 540 nm. Fermentation samples were taken from the bioreactor and centrifuged at 7000 rpm to remove any solids from the media. All determinations were performed using standard curves [43]. A sample of the supernatant (0.8 ml) was filtered through a 0.45-mm membrane filter (Millipore, USA) and mixed with

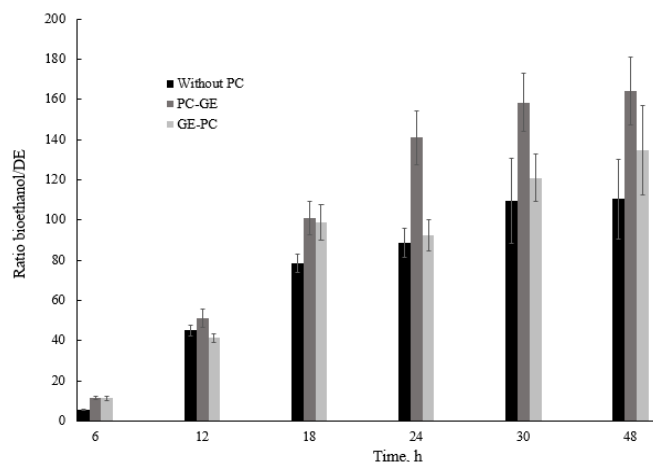


Figure 2. Productivity based on the bioethanol (g l⁻¹)-dextrose equivalent (DE, g reducing sugars per 100 g dry matter) ratio for SSF of potato starch. Source: The authors

0.2 ml of n-propanol. A gas chromatograph (model Clarus 580 Gas Chromatograph (GC, Perkin Elmer, USA), equipped with an Elite-Wax ETR column (60 m, 0.25 mm ID, Perkin Elmer, USA) connected to a flame ionization detector (FID) was used to determine ethanol concentration. The detector and injector temperatures were adjusted to 200°C. The detection limit of the method was determined to be 40 ppm.

3. Results and discussion

3.1. Effect of photocatalytic pretreatment on SSF of potato starch

Considering that starch content was the same for all treatments, a productivity ratio was determined based on the bioethanol concentration and dextrose equivalent (DE) during the process (Fig. 2). The results showed that bioethanol productivity varied significantly with photocatalytic pretreatment. Ethanol productivity during the process at 48 h was 164.2, 134.6 and 110.4 g_{bioethanol} (g_{reducing sugars g_{starch}})⁻¹ for PC→GE, GE→PC and without PC pretreatment, respectively.

The levels of the reducing sugars were detectable after the gelatinization stage and during the SSF process. They accumulated progressively but decreased after 6.0 h until 30 h. At this point, they reached a basal level (~20 g l⁻¹) that was maintained over the next 48 h. The maximum amount of reducing sugars was 119.25, 114.62 and 104.8 g l⁻¹ for PC→GE, GE→PC and the reference (without PC), respectively (Fig. 3).

The bioethanol was detectable after 6.0 h of fermentation, and higher concentration levels of bioethanol were achieved when PC pretreatment was applied. These levels increased gradually up to a maximum amount of 128.21, 106.74 and 85.91 g l⁻¹ after 30 h, for PC→GE, GE→PC and the reference (without PC), respectively. Consistently, with the reducing sugars concentration present in the media, the bioethanol concentration increased slightly during 18-30 h of fermentation, suggesting that all-reducing sugars were converted to bioethanol or that undesired products, such as ethanol, inhibited the enzymatic action.

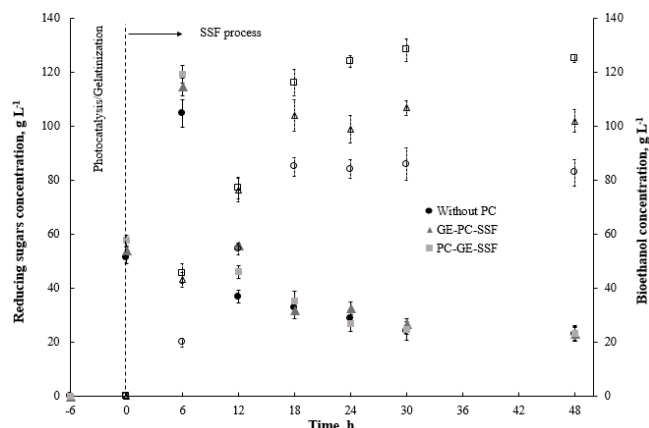


Figure 3. Effect of photocatalytic pretreatment with TiO_2 on potato starch and ethanol production. Each experiment was performed three times. Source: The authors

Table 1.

v_{\max} and K_m values for the estimated kinetic parameters for the enzymatic hydrolysis of potato starch.

Parameter	Treatment		
	Reference (without PC)	PC→GE→SSF	GE→PC→SSF
v_{\max} ($\text{g l}^{-1} \text{h}^{-1}$)	0.25×10^{-5}	0.26×10^{-5}	0.20×10^{-5}
K_m (g l^{-1})	65.78	72.9	72.4
R2	0.9894	0.9735	0.9586

Source: The authors

This result indicated that bioethanol production was greater when the photocatalytic pretreatment was applied. Compared with the reference treatment and other studies on potato starch fermentation [7, 44], we found that ethanol productivities and yields could be influenced by hydroxyl radicals generated during photocatalytic pretreatment, which could transform important structures during irradiation and accelerate the breakdown of α -1,6-glycosidic linkages, making them more susceptible to enzymatic attack during saccharification [45].

Although reducing sugars and the bioethanol concentration obtained from potato starch were similar to those attained from traditional enzymatic fermentation [9], the effect of photocatalytic pretreatment could be related to the shortening of SSF time, which was established at approximately 30 h of treatment.

3.2. Estimated kinetic parameters for bioethanol production from potato starch

The experimental concentration of reducing sugar was used for graphical correlation of the kinetic constants according to linearization of the Michaelis-Menten model, where the maximum rate or velocity of reaction of the enzymes and the Michaelis-Menten constant are v_{\max} and K_m , respectively. Table 1 shows the values obtained for each treatment according to data fitting.

The maximum rate reaction of the enzymes (v_{\max}) was similar for all treatments. According to the Michaelis-Menten constant (K_m), the enzyme showed less affinity with

the available substrate in PC pretreatments than with the reference (without PC). However, the low conversion of reducing sugars with the reference and, in contrast, the higher bioethanol concentration in PC pretreatments, suggested that TiO_2 may have altered the biological reactions of the yeast, which implies that the production of ethanol could be further improved.

4. Conclusions

Based on the productivity ratio, the bioethanol production from potato starch was improved by PC pretreatment with TiO_2 before the liquefaction process. The values obtained for the kinetic parameters regarding batch conversion of potato starch into ethanol showed that the enzyme activity (v_{\max}) reaction rate without pretreatment does not promote quick substrate conversion into ethanol. In contrast, although the reaction rate was slow for PC pretreatments, it reflected the highest substrate conversion into product. Considering traditional potato starch hydrolysis, PC pretreatment shortened the reaction time of the biological reactions. Thus, the PC pretreatment of potato starch for bioethanol production could be an environmentally aware process without acid and alkali.

Acknowledgements

The authors are grateful to the Universidad de La Sabana for financing this work through project ING-135. We would like to acknowledge Luis E. Díaz for providing insight and making important suggestions and Chemical Engineering laboratory personnel for their technical assistance.

References

- [1] Elemike, E.E., Oseghale, O.C. and Okoye, A.C., Utilization of cellulosic cassava waste for bio-ethanol production, *Journal of Environmental Chemical Engineering*, 3(4), pp. 2797-2800, 2012. DOI: 10.1016/j.jece.2015.10.021
- [2] Balat, M. and Balat, H., Recent trends in global production and utilization of bio-ethanol fuel, *Applied Energy*, 86(11), pp. 2273-2282, 2009. DOI: 10.1016/j.apenergy.2009.03.015.
- [3] Aditya, H.B., Mahlia, T.M.I., Chong, W.T., Nur, H. and Sebayang, A.H., Second generation bioethanol production: a critical review, *Renewable and Sustainable Energy Reviews*, 66, pp. 631-653, 2016. DOI: 10.1016/j.rser.2016.07.015.
- [4] Solomon, B.D., Barnes, J.R. and Halvorsen, K.E., Grain and cellulosic ethanol: History, economics, and energy policy, *Biomass and Bioenergy*, 31(6), pp. 416-425, 2007. DOI: 10.1016/j.biombioe.2007.01.023.
- [5] Tan, K.T., Lee, K.T. and Mohamed, A.R., Role of energy policy in renewable energy accomplishment: The case of second-generation bioethanol, *Energy Policy*, 36(9), pp. 3360-3365, 2008. DOI: 10.1016/j.enpol.2008.05.016.
- [6] Zabed, H., Sahu, J.N., Suelly, A., Boyce, A.N. and Faruq, G., Bioethanol production from renewable sources: current perspectives and technological progress, *Renewable and Sustainable Energy Reviews*, 71, pp. 475-501, 2017. DOI: 10.1016/j.rser.2016.12.076.
- [7] Srichuwong, S., Fujiwara, M., Wang, X., Seyama, T., Shiroma, R., Arakane, M., Mukojima, N. and Tokuyasu, K., Simultaneous saccharification and fermentation (SSF) of very high gravity (VHG) potato mash for the production of ethanol, *Biomass and Bioenergy*, 33(5), pp. 890-898, 2009. DOI: 10.1016/j.biombioe.2009.01.012.
- [8] Lareo, C., Ferrari, M.D., Guigou, M., Fajardo, L., Larnaudie, V., Ramirez, M.B. and Martínez-Garreiro, J., Evaluation of sweet potato

- for fuel bioethanol production: hydrolysis and fermentation, Springerplus, 2(493), pp. 1-11, 2013. DOI: 10.1186/2193-1801-2-493.
- [9] Duverney, W.H., Chinn, M.S. and Yencho, G.C., Hydrolysis and fermentation of sweetpotatoes for production of fermentable sugars and ethanol, *Industrial Crops and Products*, 42, pp. 527-537, 2013. DOI: 10.1016/j.indcrop.2012.06.028.
- [10] Ren, N.-Q., Zhao, L., Chen, C., Guo, W.-Q. and Cao, G.-L., A review on bioconversion of lignocellulosic biomass to H₂: key challenges and new insights, *Bioresource Technology*, 215, pp. 92-99, 2016. DOI: 10.1016/j.biortech.2016.03.124.
- [11] Betiku, E., Akindolani, O.O. and Ismaila, A.R., Enzymatic hydrolysis optimization of sweet potato (*Ipomoea batatas*) peel using a statistical approach, *Brazilian Journal of Chemical Engineering*, 3 (3), pp. 467-476, 2013. DOI: 10.1590/S0104-66322013000300005.
- [12] Pereira, C.R., Resende, J.T.V., Guerra, E.P., Lima, V.A., Martins, M.D. and Knob, A., Enzymatic conversion of sweet potato granular starch into fermentable sugars: feasibility of sweet potato peel as alternative substrate for α -amylase production, *Biocatalysis and Agricultural Biotechnology*, 11, pp. 231-238, 2017. DOI: 10.1016/j.bcab.2017.07.011.
- [13] Bai, F.W., Anderson, W.A. and Moo-Young, M., Ethanol fermentation technologies from sugar and starch feedstocks, *Biotechnology Advances*, 26(1), pp. 89-105, 2008. DOI: 10.1016/j.biotechadv.2007.09.002.
- [14] Lucyna, S., Zielonka, R. and Jaros, L., The unconventional single stage hydrolysis of potato starch, *Polish Journal of Chemical Technology*, 15(3), pp. 7-14, 2013. DOI: 10.2478/pjct-2013-0037.
- [15] Moore, G.R.P., do Canto, L.R., Amante, E.R. and Soldi, V., Cassava and corn starch in maltodextrin production, *Química Nova*, 28(4), pp. 596-600, 2005. DOI: 10.1590/S0100-40422005000400008.
- [16] Liu, Q., A study of enzymatic hydrolysis of starch in potato pulp, *Journal of Food Science*, 67(6), pp. 2113-2117, 2002. DOI: 10.1111/j.1365-2621.2002.tb09510.x.
- [17] Dewan, A., Li, Z., Han, B. and Karim, M.N., Saccharification and fermentation of waste sweet potato for bioethanol production, *Journal of Food Process Engineering*, 36(6), pp. 739-747, 2013. DOI: 10.1111/jfpe.12042.
- [18] Izmirlioglu, G. and Demirci, A., Ethanol production from waste potato mash by using *saccharomyces cerevisiae*, *Applied Sciences*, 2, pp. 738-753, 2012. DOI: 10.3390/app2040738.
- [19] Balat, M., Balat, H. and Öz, C., Progress in bioethanol processing, *Progress in Energy and Combustion Science*, 34(5), pp. 551-573, 2008. DOI: 10.1016/j.pecs.2007.11.001.
- [20] Tabka, M.G., Herpoël-Gimbert, I., Monod, F., Asther, M. and Sigoillot, J.C., Enzymatic saccharification of wheat straw for bioethanol production by a combined cellulase xylanase and feruloyl esterase treatment, *Enzyme and Microbial Technology*, 39(4), pp. 897-902, 2006. DOI: 10.1016/j.enzmictec.2006.01.021.
- [21] Dien, B.S., Jung, H.-J.G., Vogel, K.P., Casler, M.D., Lamb, J.F.S., Iten, L., Mitchell, R.B. and Sarath, G., Chemical composition and response to dilute-acid pre-treatment and enzymatic saccharification of alfalfa, reed canarygrass, and switchgrass, *Biomass and Bioenergy*, 30(10), pp. 880-891, 2006. DOI: 10.1016/j.biombioe.2006.02.004.
- [22] Collares, R.M., Miklasevicius, L.V.S., Bassaco, M.M., Salau, N.P.G., Mazutti, M.A., Bisognin, D.A. and Terra, L.M., Optimization of enzymatic hydrolysis of cassava to obtain fermentable sugars, *Journal of Zhejiang University Science B*, 13(7), pp. 579-586, 2012. DOI: 10.1631/jzus.B1100297.
- [23] Absar, N., Zaidul, I.S.M., Takigawa, S., Hashimoto, N., Matsuura-Endo, C., Yamauchi, H. and Noda, T., Enzymatic hydrolysis of potato starches containing different amounts of phosphorus, *Food Chemistry*, 112(1), pp. 57-62, 2009. DOI: 10.1016/j.foodchem.2008.05.045.
- [24] Lesiecki, M., Bialas, W. and Lewandowicz, G., Enzymatic hydrolysis of potato pulp, *Acta Scientiarum Polonorum. Technologia Alimentaria*, 11(1), pp. 53-59, 2012.
- [25] Liu, C., Shi, W., Kim, M., Yang, Y., Lei, Z. and Zhang, Z., Photocatalytic pre-treatment for the redox conversion of waste activated sludge to enhance biohydrogen production, *International Journal of Hydrogen Energy*, 38(18), pp. 7246-7252, 2013. DOI: 10.1016/j.ijhydene.2013.03.147.
- [26] Dumanli, O. and Onar, A.N., Activation of glassy carbon electrodes by photocatalytic pre-treatment, *Electrochimica Acta*, 54(26), pp. 6438-6444, 2009. DOI: 10.1016/j.electacta.2009.05.096.
- [27] Kim, G.G., Kang, J.A., Kim, J.H., Lee, K., Kim, S.J. and Kim, S.-J., Photocatalytic pre-treatment of acrylonitrile-butadiene-styrene polymer for electroless plating, *Scripta Materialia*, 56(5), pp. 349-351, 2007. DOI: 10.1016/j.scriptamat.2006.11.030.
- [28] Kim, J.S., Ito, K., Murabayashi, M. and Ahn Kim, B., Pre-treatment of the photocatalyst and the photocatalytic degradation of trichloroethylene in the gas-phase, *Chemosphere*, 38(13), pp. 2969-2978, 1999. DOI: 10.1016/S0045-6535(98)00499-8.
- [29] Yasuda, M., Miura, A., Yuki, R., Nakamura, Y., Shiragami, T., Ishii, Y. and Yokoi, H., The effect of TiO₂-photocatalytic pre-treatment on the biological production of ethanol from lignocelluloses, *Journal of Photochemistry and Photobiology A: Chemistry*, 220(2-3), pp. 195-199, 2011. DOI: 10.1016/j.jphotochem.2011.04.019.
- [30] Kim, J.H., Lee, J.C. and Pak, D., Feasibility of producing ethanol from food waste, *Waste Management*, 31(9-10), pp. 2121-2125, 2011. DOI: 10.1016/j.wasman.2011.04.011.
- [31] Ghorbani, F., Younesi, H., Esmaeili Sari, A. and Najafpour, G., Cane molasses fermentation for continuous ethanol production in an immobilized cells reactor by *Saccharomyces cerevisiae*, *Renewable Energy*, 36(2), pp. 503-509, 2011. DOI: 10.1016/j.renene.2010.07.016.
- [32] Li, Z., Liu, W., Gu, Z., Li, C., Hong, Y. and Cheng, L., The effect of starch concentration on the gelatinization and liquefaction of corn starch, *Food Hydrocolloids*, 48, pp. 189-196, 2015. DOI: 10.1016/j.foodhyd.2015.02.030.
- [33] Kádár, Z., Szengyel, Z. and Réczey, K., Simultaneous saccharification and fermentation (SSF) of industrial wastes for the production of ethanol, *Industrial Crops and Products*, 20(1), pp. 103-110, 2004. DOI: 10.1016/j.indcrop.2003.12.015.
- [34] Ghose, T.K., Roychoudhury, P.K. and Ghosh, P., Simultaneous saccharification and fermentation (SSF) of lignocellulosics to ethanol under vacuum cycling and step feeding., *Biotechnology and Bioengineering*, 26(4), pp. 377-381, 1984. DOI: 10.1002/bit.260260414.
- [35] Alvira, P., Tomás-Pejó, E., Ballesteros, M. and Negro, M.J., Pre-treatment technologies for an efficient bioethanol production process based on enzymatic hydrolysis: a review, *Bioresource Technology*, 101(13), pp. 4851-4861, 2010. DOI: 10.1016/j.biortech.2009.11.093.
- [36] Chen, H. and Qiu, W., Key technologies for bioethanol production from lignocellulose, *Biotechnology Advances*, 28(5), pp. 556-562, 2010. DOI: 10.1016/j.biotechadv.2010.05.005.
- [37] Ruiz, M.I., Sanchez, C.I., Torres, R.G. and Molina, D.R., Enzymatic hydrolysis of cassava starch for production of bioethanol with a Colombian wild yeast strain, *Journal of the Brazilian Chemical Society*, 22(12), pp. 2337-2343, 2011. DOI: 10.1590/S0103-50532011001200014.
- [38] Cornish-Bowden, A., One hundred years of Michaelis-Menten kinetics, *Perspectives in Science*, 4, pp. 3-9, 2015. DOI: 10.1016/j.pisc.2014.12.002.
- [39] Cornish-Bowden, A., The origins of enzyme kinetics., *FEBS Letters*, 587(17), pp. 2725-2730, 2013. DOI: 10.1016/j.febslet.2013.06.009.
- [40] Cárdenas, M.L., Understanding mechanisms of enzyme cooperativity: the importance of not being at equilibrium, *Perspectives in Science*, 4, pp. 10-16, 2015. DOI: 10.1016/j.pisc.2014.12.003.
- [41] Wong, M.K.L., Krycer, J.R., Burchfield, J.G., James, D.E. and Kuncic, Z., A generalised enzyme kinetic model for predicting the behaviour of complex biochemical systems, *FEBS Open Bio*, 5, pp. 226-239, 2015. DOI: 10.1016/j.fob.2015.03.002.
- [42] Marsden, W.L., Gray, P.P., Nippard, G.J. and Quinlan, M.R., Evaluation of the DNS method for analysing lignocellulosic hydrolysates, *Journal of Chemical Technology and Biotechnology*, 32(7-12), pp. 1016-1022, 1982. DOI: 10.1002/jctb.5030320744.
- [43] Jin, Y., Fang, Y., Zhang, G., Zhou, L. and Zhao, H., Comparison of ethanol production performance in 10 varieties of sweet potato at different growth stages, *Acta Oecologica*, 44, pp. 33-37, 2012. DOI: 10.1016/j.actao.2012.05.008.
- [44] Chintagunta, A.D., Jacob, S. and Banerjee, R., Integrated bioethanol and biomanure production from potato waste, *Waste Management*, 49, pp. 320-325, 2016. DOI: 10.1016/j.wasman.2015.08.010.

- [45] Sapkal, R.T., Shinde, S.S., Rajpure, K.Y. and Bhosale, C.H., Photoelectrocatalytic hydrolysis of starch by using sprayed ZnO thin films, *Journal of Semiconductors*, 34(5):53001, 2013. DOI: 10.1088/1674-4926/34/5/053001.

A. López-Vasquez, is a professor of Chemical Engineering at Universidad de La Sabana, Bogotá, Colombia, and a member of the University's Environmental Committee. His academic qualifications include a BSc. in Chemical Engineering from the Universidad Nacional de Colombia-Manizales, 1999, an MSc. in Chemical Engineering from the Universidad del Valle, 2006, and a PhD. in Chemical Engineering from the Universidad del Valle, 2016. From 2009-2017 he was an associate professor in the Environmental Engineering Department at the Universidad Libre sede principal, Colombia. At same time, he was a lecturer at Universidad de La Sabana in the Chemical Engineering Department during 2009-2017. He performs research in the fields of (i) sustainable water engineering and treatment, (ii) environmental nanocatalysis and semiconductor photocatalysis, (iii) advanced oxidation processes for the removal of emerging contaminants (photocatalysis, fenton, photo-fenton, etc.) and (iv) drinking water treatment. At the University, he teaches undergraduate courses in the fields of (i) Unit Operations Lab (ii) chemical product and process design and (iii) project planning. He also supervises undergraduate and postgraduate students in the execution of design and R&D projects, and MSc/Ph.D. postgraduate research students.
ORCID: 0000-0002-6411-5494.

M. Cobo is a full professor in the Department of Chemical Engineering at the Universidad de La Sabana, Bogotá, Colombia, is Director of the Doctoral Program in Engineering and co-leader of the Energy, Materials and Environmental Laboratory. Dr. Cobo is a BSc. in Chemical Engineer (2003) with a PhD. in Engineering (2008) and received the Fulbright Visiting Scholar Award in 2012 for a postdoctoral fellowship at Columbia University (NY, USA). Dr. Cobo's research is focused on the technical, environmental, economic, and social assessment of sustainable technologies using catalysis; developing research for the measurement and degradation of chlorinated pollutants, production and utilization of H₂ as the fuel of the future, CO₂ capture and utilization, and biorefineries.
ORCID: 0000-0001-7084-0580

J.D. Convers received a BSc. Eng in Chemical Engineering in 2016 at the Universidad de La Sabana, Bogotá, Colombia
ORCID: 0000-0002-9775-2385



UNIVERSIDAD NACIONAL DE COLOMBIA

SEDE MEDELLÍN
FACULTAD DE MINAS

Área Curricular de Ingeniería
Química e Ingeniería de Petróleos

Oferta de Posgrados

Maestría en Ingeniería - Ingeniería Química
Maestría en Ingeniería - Ingeniería de Petróleos
Doctorado en Ingeniería - Sistemas Energéticos

Mayor información:

E-mail: qcaypet_med@unal.edu.co
Teléfono: (57-4) 425 5317