

Strategy to determine the existence of small-scale wetlands in tropical Andean zones (Colombia)

Jorge Julián Vélez-Upegui ^a, Jeannette Zambrano ^a, Matthew Wahl ^b, Patricia Jiménez ^a, Nelly Itsamar Suárez ^a & Juan Sebastián Delgado ^a

^a Faculty of Engineering and Architecture Universidad Nacional de Colombia Sede Manizales, Colombia, jjvelezu@unal.edu.co, jczambranona@unal.edu.co, pejimenezp@unal.edu.co, nisuarezgu@unal.edu.co, jsdelgatot@unal.edu.co

^b Instituto de Estudios Ambientales IDEA, Universidad Nacional de Colombia Sede Manizales, Colombia, mateowahl@hotmail.com

Received: December 4th, 2018. Received in revised form: October 2nd, 2019. Accepted: October 15th, 2019.

Abstract

The Flandes community, (Tolima, Colombia), has proposed the protection of an ephemeral wetland that has been an object of interest for developers, who, by means of a simple drainage and using the dry season to their advantage, may convert a seasonal wetland into an urban area. The object of this investigation was to demonstrate that said wetland may be recovered, as a protection zone, at request of the Flandes community. This matter was approached from multiple biophysical points of view. The results indicate that it is a seasonal wetland, geological examination reveals the presence of clay lenses, reconstruction of aerial photos indicate the existence of the wetlands, and the presence of phytoplankton and diatoms is evident. The result of this study was the creation of a successful methodology for the determination of the existence of wetlands in small-scale Andean tropical areas, for their possible recovery and use by urban planners.

Keywords: wetlands; habitat transformation; urban planning; land use planning.

Estrategia para determinar la existencia de un humedal a pequeña escala en zonas tropicales andinas (Colombia)

Resumen

La comunidad de Flandes, Tolima (Colombia), propone la protección de un cuerpo de agua efímero objeto de urbanizadores, quienes mediante drenajes simples y aprovechando el periodo de estiaje convierten un humedal estacional en zona urbana. Demostrar que se trata de un humedal que puede ser recuperado como zona de protección es el objeto de esta investigación por solicitud de esta comunidad. Se aborda el problema desde múltiples puntos de vista biofísicos. Los resultados indican que se trata de un humedal estacional, la geología muestra lentes de arcillas, la reconstrucción histórica de fotos aéreas señala la existencia del humedal y evidencia la presencia de fitoplancton y diatomeas, indicando la existencia en épocas pasadas de organismos acuáticos y en el suelo. El resultado es una metodología para determinar la existencia de un humedal en zonas tropicales andinas a pequeña escala, para su posible recuperación y para ser usada por planificadores urbanos.

Palabras clave: humedales; transformación del hábitat; planificación urbana; ordenamiento territorial.

1. Introduction

Colombia is a country rich in wetlands [1]. It is estimated that over 20 million hectares of Colombian territory are covered by wetlands [2,3]. These are understood as “ecosystems that, due to geomorphological and hydrological

conditions, allow the accumulation of water, temporarily or permanently, and give rise to a characteristic type of soil, and/or organisms adapted to these conditions”. However, [4] estimate that Colombia possesses closer to 30.8 million hectares of wetlands. There are a variety of types of wetlands in the tropical Andes, which are identified by multiple

How to cite: Vélez-Upegui, J.J., Zambrano, J., Wahl, M., Jiménez, P., Suárez, N.I. and Delgado, J.S., Strategy to determine the existence of small-scale wetlands in tropical Andean zones (Colombia). DYNA, 86(211), pp. 148-156, October - December, 2019.

regional names, in Spanish, including “zanjón, ronda, zapal, poza, laguna, jagüey, firmal, ciénaga, charca, caño, bijagual, bajo, aningal, and acequia”. All of these are wetlands, and therefore form part of our water patrimony, and are not mere resources. They must be protected, as they perform regulation functions such as flood control, aquifer recharge, improve water quality and constitute zones of erosion control. Also, wetlands perform ecosystem services as contribute to the promotion of biological connectivity, favor the bird migration, and provide housing for mammals, amphibians, reptiles, birds, and insects in riparian vegetation, and aquatic invertebrates, phytoplankton, perifiton, zooplankton, arthropods, and fish in its water body [4].

Wetlands accumulate a certain amount of water, whether from underground or surface sources. The minimum parameters for wetland classification are climatic conditions, humidity conditions which are capable of favoring water accumulation and storage, and most importantly, it must have associated ecosystems and a water depth of less than six meters [5]. The following is a complete description of wetlands in accordance with the definitions of different authors:

“Variety of habitats such as swamps, peat bogs, floodplains, rivers and lakes, and coastal areas such as marshes, mangroves and seagrass beds, but also coral reefs and other marine areas whose depth at low tide does not exceed six meters, as well as artificial wetlands such as wastewater treatment ponds and reservoirs” [5].

“Ecosystems with dependence on aquatic regimes, natural or artificial, permanent or temporary, lentic or lotic, sweet or salty, including marine extensions to the posterior limit of phanerogams or reefs, or in their absence, up to six meters deep in tide low” [6].

“Wetlands are areas where water is the main controlling element of the environment, and the plant and animal life associated with it. These ecosystems occur in those areas where the waters are located on or near the land surface, or where the soils are covered by shallow water.” [7].

“Wetlands are lands transitional between terrestrial and aquatic systems, where the water table is usually at or near the surface, or the land is covered by shallow water. For purposes of this classification, wetlands must have one or more of the following three attributes: (1) at least periodically, the land supports predominantly hydrophytes; 2) The substrate is predominantly undrained hydric soil; and 3) The substrate is non-soil and is saturated with water or covered by shallow water at some time during the growing season of each year” [8].

“... those areas that are inundated or saturated by surface or ground water with a frequency sufficient to support, and under normal circumstances does or would support, a prevalence of vegetative or aquatic life that requires saturated or seasonally saturated soil conditions for growth and

reproduction. Wetlands generally include swamps, marshes, river overflows, mud, flats, and natural ponds” [9].

It may be concluded that several topography and climate scenarios produce water accumulation and retention, and in many aspects, wetlands occur due to the presence and/or exchange of groundwater [10,11]. The functions of wetlands may be simplified as follows: they provide a source of habitat, a hydrological exchange, and water quality moderation. However, not all wetlands perform all of these functions, nor do they perform all of said functions equally well [12]. They may include natural or artificial regimes, and they be permanent or temporary.

There are many definitions of wetlands [13], as shown above, but their utility is most important. Therefore, this investigation focuses on the three main exchanges of the hydrological function of non-tidal wetlands, distinguishing exchanges of groundwater, surface water, and atmospheric water [14], and observing that some wetlands, such as those located in the tropical mountain valley in the midst of the Magdalena basin, Colombia, are governed by these three types of water exchange [15-18].

For wetland determination, various authors, such as [19] who have proposed the exclusive use of remote sensing techniques, [20] define biophysical and socio-environmental criteria, which integrate complex systems that interact dynamically and propose delimitation as a process integral to ecosystem management. This considers criteria for the identification of a wetland’s functional limit and for analysis of implications and decision making. These publications focus on delimiting large wetlands, as in [21], which uses Geographical Information Systems GIS in agricultural contexts. Environmental entities in Colombia, such as the Alexander Von Humboldt Institute for Biological Research, propose a 50-category classification, ranging from purely geomorphological values, such as depth, to wetlands that include detailed vegetation and hydrological qualities [4].

Berlanga-Robles, Ruiz Luna & De Lanza Espino [22] performed a classification of Mexican wetlands and presented a summary of their classifications in 18 different parts of the world, highlighting that the Cowardin et al.’s classification [8] may be applied to wetlands greater than 2 m deep in the United States, and that secretariat of the RAMSAR convention [5] proposes the inclusion of geomorphological, hydrological, and vegetation criteria. Most classifications are based on the two above-mentioned methodologies. For example, Mediterranean area, Costa Rica, and South Africa employ proposals based on the methodology of [8], Eastern Europe uses the classification proposed by the European Union programs CORINE (Coordination of Information on the Environment), BIOTOPES, and EUNI (Habitats Classification European Nature Information System), based on the RAMSAR classification [5], as do Asia, Australia, and New Zealand. The Canadian classification is based on genetic, geomorphological, and physiognomic types [22].

The Ministry of the Environment of Colombia [2], has posited strategies for wetland conservation and sustainable

use, by way of a five-level hierarchical system which separates anthropogenic and artificial wetlands and considers aspects of the wetlands' physiognomy, soil characteristics, vegetation, and the social aspects that sustain them.

Those investigations which have been performed in Colombia to determine the existence of bodies of water have focused mainly on wetland verification and delimitation in the Bogotá savanna and the study of mangroves on the coasts. However, in the area near the Yaporogos Lagoon, a study has been found for the Caracolzal wetland in the municipality of Melgar, in which all of its components were examined, and an environmental management plan was formulated to aid conservation efforts [13]. But However, each case is unique, owing to the information available, scale of work, and purpose of wetland delimitation. In the case of the present study, this is to propose a methodology which would provide a baseline for Colombian territorial planning, which, in turn, would permit the protection of small seasonal wetlands.

The Convention on Wetlands of International Importance, especially as Waterfowl Habitat [5], the Convention on Biological Diversity, signed in Rio de Janeiro in 1992, and the Political Constitution of Colombia of 1991 in articles 79 and 80, protect the wetlands, so as to guarantee citizens' collective right to the environment [13].

Below, the methodology employed for a small-scale wetland is presented, through the Yaporogos Lagoon case study in Flandes, Tolima, where the community proposed the delimitation of a small wetland, to be conserved and protected, which would prevent its urbanization.

2. Materials and methods

The proposed methodology corresponds to field visits for the collection of primary information, including topography and geoelectric surveys. Visits to the Flandes mayoral office, the Regional Autonomous Corporation - CORTOLIMA, the Regional Autonomous Corporation of Cundinamarca-CAR, and the governorate of Tolima allowed for the obtention of the available secondary information, in terms of social and biophysical territorial data: 1) Extraction of the Digital Elevation Model, DEM [10], with which it was possible to carry out the topographic analysis, for determination of low areas and the drainage network, and obtain the topographic index which indicates the saturated areas of the terrain, 2) Regarding toponymy, old plans from the Agustin Codazzi Geographic Institute (IGAC in Spanish) were revised. Given their 1: 25,000 scale, the body of water did not appear, 3) Analysis of the local climate in the city Girardot, which neighbors Flandes [23], 4) Analysis of territorial planning tools, in the case of the municipality of Flandes, these corresponded to the Territorial Planning Scheme, EOT in Spanish [24], 5) Analysis of the urban expansion in the area, through analysis of the images available on Google Earth [25], 6) Geological studies and geomorphological analysis of the area [23,26], 7) Geophysical studies, based on Vertical Electrical Probes, VEP [27], and 8) Biological sampling, both of the soil and water [27].

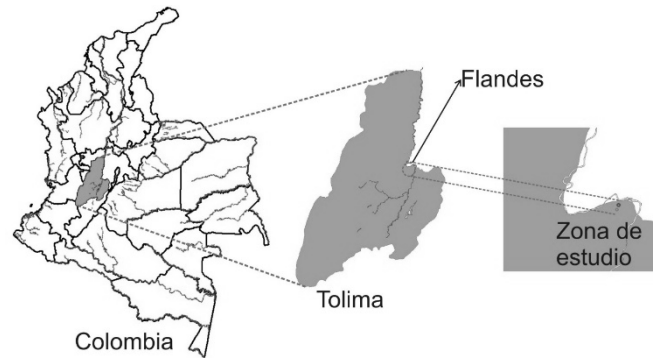


Figure 1. Location of the study area, located in the Municipality of Flandes in the tropical Colombian Andes of Colombia. Source: author elaboration. Source: The Authors.

All of this information permits a joint analysis, which determines whether or not a wetland exists, as the seasonal water body is consolidated and delimited by each of these aspects.

3. Study zone

The study area was located in the urban area of Flandes, a town in the central eastern sector of the Tolima department in Colombia. More specifically, it was located on the eastern side of town, using the main park and the vicinity of the road that connects to the Vila-Santiago airport as references, it was located in the lot adjacent to the Puerto Bahía 2 urbanization. The sector is surrounded by the Puerto Bahía 1 and 2 residential complexes, and is near the San Francisco and Puerto Mediterráneo farms. On the hill to the north, the Flandes water tower may be observed, which is located in protection zone. In Fig. 1, the location of the study area, which covers an area of approximately one hectare, is clearly presented.

4. Results and discussion

The investigation results indicate the presence of a wetland in the study area, which is explained in greater detail below.

4.1. Information extracted from the DEM

A topographical analysis of the area under study was carried out with topographic precision equipment, which was subsequently revised, through use of Digital Elevation Models DEM taken from the US Geological Survey in the United States of America [10]. There is evidence, in aerial photographs and IGAC cartography, that, in some periods, water bodies appear perfectly delimited, and in others, they disappear, which describes the seasonality of the wetland.

Toponymy refers to the study of proper names used by locals. In this case, because there is new urban development, very few people have knowledge of the area. A number of seniors, however, do have knowledge of the Yaporogos

Lagoon. Another reference to this ignorance was found on the IGAC topographic maps from 2005, which use a 1:25,000 scale. Therein, no reference was made to the Yaporogos Lagoon, thus this point was inconclusive, given the scale of the wetland.

The topography of the area was naturally lower than the surrounding areas, a fact which was validated in the field by topographic precision equipment and by means of DEM analysis, which used the topographic index [28]. This facilitates the accumulation of subsurface water during wet seasons. It also showed the existence of natural drainage, which leads surface runoff water to the area in which the body of water that was previously modified was relocated. Such drainage has been used by the owners of the nearby lots in both the past and present to drain water. It has been rerouted, in accordance with the needs of the neighboring buildings. However, it still fulfills its hydrological purpose, which is to drain water towards the Magdalena River, located downstream.

4.2. Climatology

According to the plan for the management of the Magdalena River basin - eastern slope of the Cundinamarca department [23], the study area is characterized by a warm, semiarid climate, according to the Caldas-Lang classification, with a bimodal rainfall regime, associated with the Inter-Tropical Confluence Zone, ITCZ [29], where the first wet season is the most intense, and which occurs from the end of April to June. The second occurs from September to November. Monthly minimums occur in January and July, amounting to approximately 45 mm of monthly rain, with an average annual rainfall of approximately 1,400 mm [23].

The average temperature in the region is 28 ° C, with minimal variations throughout the year. The difference in thermal gradient between the warmest and coldest months is 3 ° C. The relative humidity averages 65% monthly, and behaves analogously to precipitation, with maximums in rainy seasons. Meanwhile, the potential of evapotranspiration presents a tendency opposite the rains, which generates a water deficit in the summer seasons.

The region has dry tropical forest type vegetation, but in the study area, the bush and shrub areas predominate. Said shrubby vegetation blooms during rainy season and loses its foliage during the dry period, a behavior which responds to climatic variability and the strong anthropic intervention of livestock and agriculture activities [23].

4.3. Territorial planning tools

According to the Territorial Ordinance Scheme of the Municipality of Flanders, this area has been declared an area of municipal interest and influence [24, p. 60], extending to the top of the hill with the municipal water tank, joining both urban and rural areas. The present document mentions that the water system in the area is comprised of lagoons, of which one is “on the lot where the water tanks are located,” and the other at the back of the Libertador neighborhood. They are

not maintained, nor do they have management plans for effectively use as recreational elements” [24, pp.32].

4.4. Urban evolution in the zone

Old Agustín Codazzi Geographical Institute (IGAC) images and those of Google Earth permit the location of the water mirror, called Yaporogos Lagoon by the community. There, additionally, there is a channel flowing SW-NE and an outcropped water mirror. In order to carry out this analysis, images were taken from Google Earth [25], the first of which was captured on December 31, 1969, as shown in Fig. 2. Although its resolution is low, when focused on the municipality, one may observe that, at the time, the study area at the Yaporogos Lagoon was not surrounded by buildings. An aerial photograph of the year 2012, which is presented in Fig. 3, shows the area of interest in greater detail, and indicates a significant urban change, with a considerable increase in new construction. In the 2012 image, abundant vegetation is observed, while in Fig. 4, from 2015, the vegetation is shown to be considerably reduced by burning in the area, followed by the sprouting of pastures and ground vegetation, which is observed in the present, as indicated in Fig. 5 [25].

4.5. Geology and geomorphology

The Magdalena River valley, at the height of the Tolima and Cundinamarca departments, is characterized by limestone and sandstone strata. Additionally, multiple eruptions of the Machín and Tolima volcanoes have deposited pyroclastic flows on the banks of the Magdalena River [23].

In the study zone, sedimentary rocks from the Honda group (Ngh), as well as “Abanico de Espinal” (Qae) discordant volcanoclastic deposits may be identified, as documented in the Colombian geological map 1:100.000 from the IGAC, created in 2013. The Honda group is comprised of typical, greenish gray sandstone that was established in the San Antonio Mountain Range, east of the town of Honda [30]. In the study area, the Honda group emerges southwest of Girardot in the Flandes area.

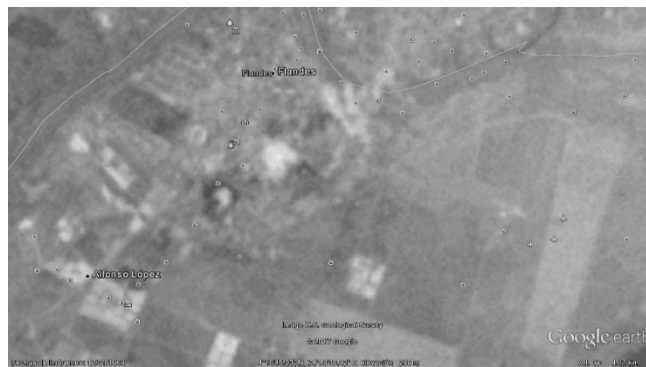


Figure 2. Aerial photograph from December 31, 1969, at an elevation of 4.17 km, approximately.

Source: Adapted from Google Earth.



Figure 3. Aerial photograph from February 14, 2012, at an elevation of 284 m, approximately.
Source: Adapted from Google Earth.



Figure 4. Aerial photograph from July 23, 2015, at an elevation of 284 m, approximately.
Source: Adapted from Google Earth.



Figure 5. Aerial photograph from May 2, 2017, at an elevation of 284 m, approximately.
Source: Adapted from Google Earth.

The range of Espinal (Qae), originated with the contribution of the Cerro Machín volcano, with a high volcanic content and finer material from the Quaternary Age. This fan, in the

flat area between Flandes and Espinal, is used for agriculture, with sporadic levels of gravel, high porosity, and hydraulic conductivity. These deposits, with their high bearing capacities, are also exploited as building materials [31].

Geomorphologically, it is identified as a discharge zone for the Central Mountain Range, a superficial accumulation that depends on the physical properties of said deposits and lithological outcropping units. In the study area, the unit called the Honda group was identified, whose lithological composition favors accumulation. Thus, it may be identified as a potential aquifer area. Additionally, its undulated surface favors the accumulation of water bodies dependent on lithology and climate. These processes led to the formation of fluvial system geoforms. For previous geoforms, the composition of the sediments varies significantly, aspects which may be analyzed for the reconstruction of accumulation environments.

4.6. Water quality

The chemical composition of continental water varies widely, mainly due to the lithological variability of the basin or lake, climate, vegetation, and environmental factors. Anthropogenic factors are also important because they directly affect soil erosion, agricultural-livestock activities, irrigation, as well as the negative impact in the area destined for waste dumping and urbanization. All of these tend toward the accumulation and concentration of compounds that, in their organic degradation process, mineral or ionic substances permeate the Magdalena River [32].

Algae are commonly used in the biological characterization of the ecosystem, determination of the healthiness of a water resource, and its subsequent use for different applications [33]. Diversity, the combination of morphological, physiological, and reproductive characteristics make algae important diagnostic organisms, suitable for use and application in ecosystem analysis and evolution [34].

Paleoecological, paleolimnological, paleoenvironmental, and paleoclimatic research use diatoms as indicators which provide valuable information, due to the sensitivity of this group of algae to environmental changes, including valve preservation in lake sediments [35]. Additionally, paleolimnological conditions reflect local environmental conditions, specifically precipitation and evaporation, two of the most important climatic factors [36].

4.7. Geoelectrical surveys

Geophysical methods are based on the measurement of certain physical properties of the materials contained in the earth's crust: density, magnetic field, electrical conductivity, speed of transmission of elastic waves, etc. The interpretation of these measurements, based on the contrasts between, and anomalies observed, allow for preparation of models with the characteristics of the subsoil and its spatial distribution. Surface electrical studies represent a method of analyzing

geomaterials in terms of their electrical properties. Of these, resistivity has been related to petrophysical parameters such as porosity and the degree of saturation. The acquisition of field data may be carried out with electrode configurations, which can vary in their arrangement, and that strictly depend on the object upon which the scan is performed. A common configuration in these electrical methods is the Vertical Electrical Probe (VEP), as it is possible to produce one-dimensional models that correspond to discrete points on the surface [27].

In this study, electrical surface studies were carried out, using a method of geomaterial analysis, in terms of its electrical properties, which are subsequently compared to petrophysical parameters, such as porosity and degree of saturation. The configuration employed was Vertical Electrical Sounding (VES), whereby geomaterial resistivity values were found in the area of interest from 5Ωm to 34Ωm. This variation in resistivity values is due to the humidity and salts present. The resistivity is characteristic of fine geomaterials (clays - limes) that, in saturated conditions, present resistivity values ranging between 5 Ωm and 20Ωm, and in unsaturated conditions, between 20Ωm and 40Ωm. This, in turn, depends on the concentration of salt present in the water which saturates the geomaterial.

4.8. Biotic samples

A complete study requires a biological analysis, in order to establish the existence of certain ecosystemic relationships that can define the existence of a wetland. They usually make use of certain ecological attributes, such as wealth, abundance, and diversity, among others, of the biological communities. For the present study, the community of *phytoplankton algae* in water and soil diatoms were used, and whose determinations were made by the taxonomic gender category, which is based on the works and taxonomic guides of [37-43] and the <http://www.algaebase.org/> global database.

The purpose of the biological tests was initially to extract a nucleus from the deepest zone, where a depression in the ground had been detected, in order to establish whether there was evolution in the aquatic ecosystem, through the use of diatoms (Bacillariophyta), via the previously described lithological profile. However, when the area studied was visited, it was found to be flooded, and so a phytoplankton sample was collected, in order to glimpse the water quality of the flooded area by way of these organisms. Twenty-one morphotypes from 15 families, 11 orders, six classes, and five phytoplankton divisions were found. The Bacillariophyta division (diatoms) contributed 29% of the morphotype total (6). Additionally, five (24%) Chlorophyta, and four (19%) Charophyta morphotypes were observed (the last two are green algae), Cyanobacteria contributed four morphotypes (19%), and the Euglenophyta division represented 10% with two morphotypes

Diatoms (Bacillariophyceae) are unicellular, free-living microscopic algae, although they also form colonies surrounded by mucilage and filamentous individuals [44].

They are observed in all types of habitats, where the light, temperature and chemical conditions are favorable for their growth, and are distributed in all latitudes and longitudes in the world. Thus, they are present in rivers, estuaries, lakes, and marine environments located in various substrates, as well as in humid, cold, and hot springs [45]. The fossil record indicates that diatoms were already a specialized group in the early Cretaceous period [46]. In the Yaporogos Lagoon, it was observed that, although diatoms provided the greatest number of taxa, they were not predominant.

In the phytoplankton sample (extracted from the water) it was found that the taxa with the most predominance was cyanobacteria, *Anabaena* genus. Species in this genus are planktonic, and sometimes they form water flowers (mainly of the Dolichospermum subgroup) or mats that cover different substrates, aquatic plants, submerged forests, stones, etc. Several species grow benthic or in soils, and several are known saline (brackish) biotopes. Many species have limited geographical distribution areas, but the genus is extensive and common. Some of these form dense superficial blooms, and others register as toxic [39,47].

As for the soil samples, the *Hantzschia* aff. *Amphioxys*, *Navicula* aff. *mutica*, *Sellaphora* sp. and *Fragilaria* sp diatoms were present. On the one hand *Hantzschia amphioxys* is a cosmopolitan species that is favored in periodically dry habitats, including soils and cracks in rocks, which extends to a wide variety of rivers, and probably washed away by soils. It is also very characteristic of temporary aquatic habitats [43]. On the other hand, *Navicula mutica* is also a species distributed throughout the world, and is quite common in brackish conditions and in waters prone to desiccation [43]. The ecological characteristics that describe these two species explain their presence in the nuclei far from the flooded area.

While the *Fragilaria* sp. and *Sellaphora* genera, with affinity to the *pupula* species, are typical of wetlands, as is *Fragilaria* sp. It is abundant in lake plankton, is a taxon that is considered to have been introduced by human activities, and *Sellaphora pupula* is a species that is found in a wide spectrum of waters rich in electrolytes, with some populations that are in heavily polluted conditions. These situations explain the reasons that these two species were only recorded within the lithological sample extracted from the water mirror, and likewise sustain the conclusion of the liquid sample reading, as it indicates the degree of contamination to which this body of water is exposed.

5. Conclusions and recommendations

The complexity of wetlands in their geoforms, biodiversity, water quantity and quality, types of soils and land uses, and their relationship with the community make it essential to estimate and delimit them with a better scale than that available at the Institute of Biological Research Alexander von Humboldt. Its delimitation must be included in planning tools, such as Municipality Management Plans, Watershed Management Plans, Environmental Management

Plans, (PMA in Spanish) and/or in any other territorial foresight or planning entity.

This article presents a methodology which determines the existence of small-scale wetlands in areas of urban expansion, in order to determine whether the existence of wetlands compromises any ecosystem of interest to the community. This methodology must be implemented in the planning tools of Colombian municipalities, as developers are constantly pressuring local and regional governments to modify land use in these areas. Because they are stationary wetlands that only appear in rainy seasons, developers take advantage of intense summer periods to request land use changes. However, the elimination of said wetlands causes flooding, loss of biota, loss of biological connectivity, water pollution, decrease in aquifer recharge, and land instability, which leads to important socio-environmental problems and ecosystemic changes.

Wetland areas may be identified through use of the methodology proposed in this article, as in Colombia, intensive urbanization in wetland areas is common, under the premise of lack of studies or procedures to determine whether they are really wetlands or are usable areas for urban sprawl. Therefore, it is shown that, in the case of the Yaporogos wetland in Flanders, in the Tolima department of Colombia, it was possible to determine the existence of the wetland using: 1) topographic methods, based on primary information taken in the field and the use of the topographic index, using the MED, 2) geological analysis with vertical electric soundings that help to expose aquifer lenses, 3) geomorphological analysis of the area, 4) review of the urban development in the area and 5) biological tests, by way of the ground diatoms and water periphyton.

The results indicate that the Yaporogos Lagoon existed many years ago, and was used to provide water to livestock, that it is a natural seasonal wetland that was moved south for the convenience of urbanization and construction, and whose feeder drainage channel was redirected, such that, at present, the water that runs through this natural channel borders the eastern side of the development, in a modification of its original course. Despite this movement, the wetland serves to restrain the high water flows produced in the rainy season, because the topography and geology of the site stimulate water accumulation and the presence of aquatic ecosystems associated with the area. This study sought to highlight wetland delimitation processes, which consider the performance of ecosystemic functions to be of greater importance than the exact location of a wetland. It is expected that, with these results, both the community and CORTOLIMA may implement the measures necessary for the recovery and conservation of this wetland.

Acknowledgements

The authors would like to especially thank the Regional Autonomous Corporation of Tolima, CORTOLIMA, the Flanders mayoral office, the Faculty of Engineering and Architecture, the Academic Work Group on Hydraulic and

Environmental Engineering from the Hydraulics Laboratory of the National University of Colombia, Manizales branch, who provided the information and support necessary to carry out the "Studies which seek to determine the existence of the Yaporogos Lagoon in the municipality of Flanders, Tolima" project, from which this study emerged.

References

- [1] Andrade, G., Adaptándonos a un país de agua. en: Jaramillo, U., Cortés-Duque J. y Flores C., (Eds.), Colombia Anfibia, un país de humedales. Vol. I., Instituto de Investigación de Recursos Biológicos Alexander Van Humboldt. Bogotá D.C., Colombia, 2015, 140 P.
- [2] MINAMBIENTE, Política Nacional para Humedales interiores de Colombia. Estrategias para su conservación y uso sostenible. Ministerio de Medio Ambiente y Consejo Nacional Ambiental. Bogotá, Colombia, 2001, 67 P.
- [3] MINAMBIENTE, Colombia tiene más de 30 mil humedales. Ministerio de Medio Ambiente y Desarrollo. [en línea]. Bogotá 6 de febrero. 2018. [Consulta en: octubre 25 de 2018], Disponible en: <http://www.minambiente.gov.co/index.php/component/content/article/noticias/1659-colombia-tien-mas-de-30-mil-humedales>.
- [4] Jaramillo, U., Cortés-Duque J. and Flores C., Colombia Anfibia, un país de humedales. Vol. I., Instituto de Investigación de Recursos Biológicos Alexander Van Humboldt, Bogotá D.C., Colombia, 2015, 140 P.
- [5] Secretaría de la convención de RAMSAR., Manuales RAMSAR para el uso racional de los humedales. Manual 1. Uso racional de los humedales: Conceptos y enfoques para el uso racional de los humedales, 4^a Ed., Gland, Suiza, 2010.
- [6] Tabilo-Valdivieso, L., Beneficio de los humedales en américa central. El potencial de los Humedales para el desarrollo. PRMVS-UNA y WWF América Central, San José, Costa Rica. ISBN: 9977-12-280-6. 1997.
- [7] CORPOCALDAS., Ecosistemas de humedales. Corporación Autónoma Regional de Caldas. [en línea]. 2010. [consultado en: octubre de 2018] Disponible en: http://www.corpocaldas.gov.co/dynamic_page.aspx?p=640
- [8] Cowardin, L., Carter, V., Golet, F. and LaRoe, E., Classification of wetlands and deepwater habitats of the United States. Department of the Interior, Fish and Wildlife Service. FWS/OBS-79/31. Washington D.C., USA, 1979.
- [9] USGS. Wetland values. Fort Belvoir: National Technical Information Service. United States Geological Survey USGS. 1979.
- [10] USGS. Chemical modifiers: in the upper 40 cm of soil 20% or more organic matter by weight = organic soil. United States Geological Survey USGS. [online]. 2015. Available at: <https://water.usgs.gov/nwsum/WSP2425/definitions.html>
- [11] Mitsch, W.J. and Gosselink, J.G., The value of wetlands: importance of scale and landscape setting. Ecological Economics, 35(200), pp. 25-33, 2000. DOI: 10.1016/S0921-8009(00)00165-8
- [12] Novitzki, R.P., Smith, R.D. and Fretwell, J.D., Restoration, Creation, and Recovery of Wetlands. Wetlands functions, values, and assessment. U.S. Geolcal Survey. 1997. [consulted: october of 2018] Available at: <https://water.usgs.gov/nwsum/WSP2425/functions.html>
- [13] PMA. Plan de Manejo Ambiental del humedal Caracolizal. Universidad del Tolima y CORTOLIMA, Tolima, Colombia, 2010, 189 P.
- [14] Rasmussen, T., Methods for evaluating wetland condition: wetland hydrology. Office of Water, U.S. Environmental Protection Agency, Washington, DC. EPA-822-R-08-024. U.S. EPA. 2008.
- [15] Winter, T.C., Relation of streams, lakes, and wetlands to groundwater flow systems. Hydrogeology Journal, [online]. 7, pp. 28-45, 1999. Available at: <https://link.springer.com/article/10.1007/s100400050178>
- [16] Salazar, L., Humedal de Tierra Blanca. Revisión y ajuste de los planes de manejo ambiental de los humedales de Neuta, Tierra Blanca, Laguna de la Herrera, y Humedal El Yulo. De acuerdo con lo establecido en la Resolución 157 de 2004 del MAVDT. Corporación Autónoma Regional de Cundinamarca, CAR. Bogotá, Colombia, 2006, 355 P.

- [17] Caballero-Acosta, H., Prediagnóstico físico y sociocultural participativo del estado ambiental de los humedales del Magdalena Medio Antioqueño, jurisdicción de Corantioquia, 2009.
- [18] IDEAM. Estudio Nacional del Agua 2014. Sistemas Acuiferos. Tabla 3.3. Instituto de Hidrología, Meteorología y Estudios Ambientales de Colombia. Bogotá D.C., 2019, 135 P.
- [19] Brena, J., Castillo, C. y Wagner, A., Metodología para la delimitación y caracterización de humedales en escalas 1:50000 y 1:20000. *Tecnol. Cienc. Agua* [en línea]. 7(2), pp.85-98, 2016, ISSN 2007-2422, 2016. Disponible en: <http://hdl.handle.net/20.500.12013/1697>.
- [20] Vilardy, S., Jaramillo, Ú., Flórez, C., Cortés-Duque, J., Estupiñán, L., Rodríguez, J. and Aponte, C., Principios y criterios para la delimitación de humedales continentales: una herramienta para fortalecer la resiliencia y la adaptación al cambio climático en Colombia. Instituto de Investigación de Recursos Biológicos Alexander von Humboldt. Bogotá, Colombia, 2014, 100 P.
- [21] Anaya, J.A., Escobar-Martínez, J.F. Massone, H., Booman, G., Quiroz-Londoño, O.M., Cañon-Barriga, C.C., Montoya-Jaramillo, L.J. and Palomino-Ángel, S., Identification of wetland areas in the context of agricultural development using Remote Sensing and GIS. *DYNA*, 84(201), pp. 186-194, 2017. DOI: 10.15446/dyna.v84n201.58600
- [22] Berlanga-Robles, CA, Ruiz-Luna, A. and de Lanza-Espino, G., Esquema de clasificación de los humedales de México. *Investigaciones geográficas*, Boletín 66. pp. 25-46. 2008. http://www.scielo.org.mx/scielo.php?script=sci_arttext&pid=S0188-46112008000200003
- [23] CAR. Plan de Ordenación y Manejo de la cuenca del río Magdalena – vertiente oriental departamento de Cundinamarca. Vol. 1. Corporación Autónoma Regional de Cundinamarca CAR. Bogotá D.C., Colombia, 2006, 659 P.
- [24] Mayorga, L. y Fajardo, J., Esquema de Ordenación Territorial E.O.T. del municipio de Flandes, 2000 – 2009. Alcaldía de Flandes, Tolima, Flandes, Tolima, Colombia, 2000.
- [25] Google. Mapa de Flandes, Tolima Colombia. [en línea]. 2018. [Consulta en: abril de 2018]. Disponible en: <https://www.google.com/maps/@4.2813239,-74.8025165,1681m/data=!3m1!1e3?hl=en>
- [26] INGEOMINAS. Mapa geológico de Colombia plancha 245 Girardot, escala 1:100000, 2013.
- [27] UNAL. Proyecto para realizar los estudios tendientes a determinar la existencia de la Laguna Yaporogos en el municipio de Flandes, Tolima. Universidad Nacional de Colombia Sede Manizales y CORTOLIMA, 2017, 64 P.
- [28] Beven, K.J. and Kirkby, M.J., A physically-based variable contributing area model of basin hydrology. *Hydrological Science Bulletin*, 24 (1), pp. 43-69, 1979. DOI: 10.1080/02626667909491834
- [29] Poveda, G., La hidroclimatología de Colombia: una síntesis desde la escala interdecadal hasta la escala diaria. *Rev. Acad. Colomb. Cienc.*, [en línea]. XXVIII(107), pp. 201-221, 2004. Disponible en: http://www.accefyn.com/revista/Vol_28/107/201-222.pdf
- [30] De Porta, J., Estratigrafía del Cretácico superior y Terciario en el extremo. *Boletín de Geología*, [en línea]. 19, pp. 5-50, 1965. Disponible en: <https://revistas.uis.edu.co/index.php/revistabole-tindegologia/articulo/view/5794/5923>
- [31] CORPOICA, CORTOLIMA, SENA, Universidad del Tolima. Plan de ordenación y manejo de la cuenca mayor hidrográfica del río Coello., CORPOICA, CORTOLIMA, SENA, Universidad del Tolima, Ibagué, Colombia, 2006.
- [32] Potapova, M. and Charles, D.F., Distribution of benthic diatoms in US rivers in relation to conductivity and ionic composition. *Freshwater Biology*, 48(8), pp. 1311-1328, 2003. DOI: 10.1046/j.1365-2427.2003.01080.x
- [33] Prygiel, J., Leveque, L. and Iserentant, R., Un nouvel indice Diatomique Pratique pour l'évaluation de la qualité des eaux en réseau de surveillance. *Reveu des Sciences de l'Eau*, 9, pp. 97-113, 1996. DOI: 10.7202/705244aaradresse copiée
- [34] Lange-Bertalot, H., Pollution tolerance of diatoms as a criterion for water quality estimation. *Nova Hedwigia Beifeft*, 64, pp. 285-304, 1979.
- [35] Téllez, B. y Schillizzi, R., Asociaciones de Diatomeas en Paleoambientes Cuaternarios de la costa sur de la Provincia de Buenos Aires, Argentina. *Pesquisas em Geociências*, 29(1), pp. 59-70, 2002. DOI: 10.22456/1807-9806.19598
- [36] Caballero, M.E., Reconstrucción paleolimnológica del lago del Chalco, México, durante el último máximo glacial- el registro de diatomeas entre 34,000 y 15,000 años A.P. *Revista Mexicana de Ciencias Geológicas*, [en línea]. 14(1), pp. 91-100, 1997. Disponible en: [http://satori.geociencias.unam.mx/14-1/\(8\)Caballero.pdf](http://satori.geociencias.unam.mx/14-1/(8)Caballero.pdf)
- [37] Bourrelly, P., Les algues d'eau douce. Initiation à la systématique. Tome II: les Algues jaunes et brunes. *Chrysophycées, Phéophycées, Xanthophycée set Diatomées*. Éditions N. Boubée y Cie. Paris, France, 1974. DOI: 10.1002/iroh.19740590219
- [38] Biggs, B.J. and Kilroy, C., Stream periphyton monitoring manual. National Institute of Water and Atmospheric Research. Christchurch, NIWA, New Zealand. [online]. 2000, 246 P. Available at: https://www.niwa.co.nz/sites/niwa.co.nz/files/import/attachments/peri_complete.pdf
- [39] Wehr, J.D. and Sheath, R.G., Chapter 2 – Habitats of freshwater algae. In: *Freshwater algae of North America: ecology and classification*. 2nd Ed. Academic Press, Amsterdam, Boston, USA, [online]. 2003, pp. 13-74. Available at: <http://dx.doi.org/10.1016/B978-0-12-385876-4.00002-5>
- [40] Bicudo, C.d. and Menezes M., Géneros de algas de Aguas Continentais do Brasil: chave para identificação e descrições. 2da Edição. Ed. Rima, Rio de Janeiro, Brazil, 2006.
- [41] Krammer, K. and Lange-Bertalot, H., *Bacillariophyceae*. 2. Bacillariaceae, Epithemiaceae, Surirellaceae. In: Ettl, H., Gerloff, J., Heynig, H. and Mollenhauer, D., Eds., *Süßwasserflora von Mitteleuropa*, 2(2), VEB Gustav Fischer Verlag, Jena, 1986, 876 P.
- [42] Krammer, K. and Lange-Bertalot, H. 2/2. *Bacillariophyceae*. 2. Teil: Bacillariaceae, Epithemiaceae, Surirellaceae. In: Ettl, H., Gerloff, J., Heynig, H. and Mollenhauer, D. (eds.), *Süßwasserflora von Mitteleuropa*. G. Fischer Verlag, Stuttgart, Germany, 1988, 596 P.
- [43] Taylor, J.C., Harding, W.R. and Archibald, C.G.M., An illustrated guide to some common diatom species from South Africa. *Water Research Commission Pretoria*. [online]. 2007, 178 P. Available at: http://www.researchgate.net/profile/William_Harding3/publication/264195013_An_Illustrated_Guide_to_Some_Common_Diatom_Species_from_South_Africa.
- [44] Wetzel, R.F., *Limnología*. Ed. Omega. Barcelona, España, 1983, 679 P.
- [45] Lobo, E.A., Callegaro, V.L.M. and Bender, E.P., Utilização de algas diatomáceas epilíticas como indicadoras da qualidade da água em rios e arroios da Região Hidrográfica do Guaíba, RS, Edunisc, Ed., Brasil, 2002.
- [46] Maidana, N., Díaz, V. and Krammer, K., Taxonomy and valve structure of *Cymbella neuquina* Frenguelli (*Bacillariophyceae*), including a new combination, *C. neuquina* var. *fastigata* (Krasske) nov. comb. *Nova Hedwigia*. 74(3-4), pp. 339-348, 2002. DOI: 10.1127/0029-5035/2002/0074-0339
- [47] Guiry, M.D. and Guiry, G.M., *AlgaeBase*. World-wide electronic publication, National University of Ireland, Galway. [online]. 2013 [consulted on December 13th of 2017] Available at: <http://www.algaebase.org>.

J.J. Vélez-Upegui, received the BSc. Eng. in Civil Engineering in 1993 from the Universidad Nacional de Colombia Sede Medellín, and the PhD in Water Resources Management in 2003 from the Universidad Politécnica de Valencia, Spain. From 1993 to 1997, he worked for hydrology and hydraulics consulting companies since 1997 for the Universidad Politécnica de Valencia as research assistant. Since 2006 is a full professor in the Civil Engineer Department, Facultad de Ingeniería y Arquitectura, Universidad Nacional de Colombia, sede Manizales, Colombia. His research interests include: water resources management, hydrological processes, modeling and forecasting in hydrology; climate time-series analysis and fluvial and river processes.
ORCID: 0000-0003-3856-1105

J. Zambrano, received the BSc. Eng. in Civil Engineering in 1997, the MSc in Civil Engineering in 2001 from the Universidad de los Andes Colombia, and the PhD degree in Civil Engineering in 2014 from the Universidad

Politécnica de Catalunya, Spain. From 1997 to 2005 she worked in project management. Currently, she is a professor in the Civil Engineering Department, Facultad de Ingeniería y Arquitectura, Universidad Nacional de Colombia, sede Manizales, Colombia. Her research interests include: urban hydrology modeling, water resources planning and management, series analysis and sediment modeling.
ORCID: 0000-0002-9674-7621

M. Wahl, received the BSc. in Science of Chemistry in 1978 at the University of South Carolina and a PhD in Environmental Health Science, in 1996 at the University of South Carolina, USA. He has worked in programs and projects related with underground water with emphasis on water quality. He has worked as a researcher and occasional professor in the Instituto de Estudios Ambientales (IDEA), de la Universidad Nacional de Colombia Sede Manizales.
ORCID: 0000-0002-3407-533X

P. Jimenez, received the BSc. in Biology in 2011 from the Universidad de Caldas and MSc. in Environmental Engineering from the Universidad Nacional de Colombia sede Manizales, Colombia. From 2013 she worked as assistant researcher in the Environmental studies in Water and Soil research group. Her research interests include: aquatic communities for water quality in water quality analysis for environmental impact studies and water resources management.
ORCID: 0000-0001-7258-0305

N.I. Suarez, received the BSc. in Geology in 2015 from the Universidad Industrial de Santander and candidate to MSc. in Water Resources from the Universidad Nacional de Colombia sede Manizales, Colombia. Since 2015 she worked as assistant professor in Universidad de Pamplona, Santander and consultant in hydrogeology and geology sciences. Her research interests include: hydrological processes, hydrogeologic modeling and GIS applied to geology.
ORCID: 0000-0001-7526-6944

J.S. Delgado, received the BSc. in Civil Engineering from the Universidad Nacional de Colombia sede Manizales, Colombia. His research interests include: hydrological processes and GIS applied to hydrology.
ORCID: 0000-0001-7135-0460



UNIVERSIDAD NACIONAL DE COLOMBIA

SEDE MEDELLÍN
FACULTAD DE MINAS

Área Curricular de Ingeniería
Química e Ingeniería de Petróleos

Oferta de Posgrados

Doctorado en Ingeniería - Sistemas Energéticos
Maestría en Ingeniería - Ingeniería Química
Maestría en Ingeniería - Ingeniería de Petróleos

Mayor información:

E-mail: qcaypet_med@unal.edu.co
Teléfono: (57-4) 425 5317