



Formamide deionized accelerates the somatic embryogenesis of *Cunninghamia lanceolata*

Shichan He¹, Zhaodong Hao¹, Dandan Wang¹, Yulin Guo¹, Hua Wu¹, Asif Ali¹, Renhua Zheng^{2*}, Xueyan, Zheng³, Jinhui Chen¹, Jisen Shi^{1*}

¹Key Laboratory of Forest Genetics & Biotechnology of Ministry of Education of China, Co-Innovation Center for Sustainable Forestry in Southern China, Nanjing Forestry University, Nanjing 210037, China; ²Key Laboratory of Timber Forest Breeding and Cultivation for Mountainous Areas in Southern China, Fujian Academy of Forestry, Fuzhou, 350012, China; ³National Germplasm Bank of Chinese fir at Fujian Yangkou Forest Farm, Shunchang 353211, China

Abstract

Aim of study: To improve the efficiency of the somatic embryogenesis (SE) in *Cunninghamia lanceolata*.

Area of study: The study was conducted at Nanjing Forestry University (Nanjing, China).

Materials and methods: Immature cones of *C. lanceolata*, genotype 01A1 which was planted in Yangkou State-owned Forest Farm (Fujian, China), were used to induce callus. These calli were used to induce SE, concentration gradients of 0 g/L, 0.01134 g/L, 0.1134 g/L, 1.1134 g/L and 11.34 g/L of FD was added, to explore the optimal concentration for promoting SE of *C. lanceolata*.

Main results: Low concentration of FD promoted the maturation of somatic embryos, while high concentration of FD lead to browning of embryogenic callus. The seedling rate and rooting number of seedlings induced by different concentrations of FD were significantly different.

Research highlights: This study may aid in the rapid maturation of *C. lanceolata* somatic embryos and is useful for accelerated *C. lanceolata* breeding.

Keywords: *C. lanceolata*; Formamide Deionized; Somatic embryogenesis; Seedling rate.

Abbreviations used: FD (Formamide Deionized), FD₀ (the concentration of 0 g/L FD), FD_{0.01134} (the concentration of 0.01134 g/L FD), FD_{0.1134} (the concentration of 0.1134 g/L FD), FD_{1.134} (the concentration of 1.134 g/L FD), FD_{11.34} (the concentration of 11.34 g/L FD).

Authors' contributions: SJS, CJH and ZRH conceived and planned the experiments. ZRH and ZXY are responsible for field tests, sample collection, etc. WH, GYL induced embryogenic callus. The HSC performed somatic embryo induction, analyzed the data, and wrote this manuscript. WDD, AA, HZD and CJH provided critical feedback. CJH and SJS give administrative, technical, or material support.

Citation: He, S., Hao, Z., Wang, D., Guo, Y., Wu, H., Ali, A., Zheng, R., Zheng, X., Chen, J., Shi, J. (2021). Formamide Deionized Accelerates the Somatic Embryogenesis of *Cunninghamia lanceolata*. Forest Systems, Volume 30, Issue 3, e016. <https://doi.org/10.5424/fs/2021303-18068>.

Supplementary material: Figures S1 and S2 accompany the paper on FS website.

Received: 06 Mar 2021. **Accepted:** 16 Nov 2021.

Copyright © 2021 INIA. This is an open access article distributed under the terms of the Creative Commons Attribution 4.0 International (CC-by 4.0) License.

Funding agencies/institutions	Project / Grant
Fujian Province Science and Technology Research funding on the fourth Tree Breeding Program of Chinese fir	Min Lin Ke 2016-35
Nature Science Foundation of China	32071784

Competing interests: The authors have declared that no competing interests exist.

Correspondence should be addressed to Jisen Shi: jshi@njfu.edu.cn and Renhua Zheng: zrh08@126.com

Introduction

Cunninghamia lanceolata (Lamb.) Hook, belonging to the Taxodiaceae family, is the principal indigenous tree species in subtropical Southern China (Duan *et al.*, 2017) and has long been cultivated since more than one thousand years ago (Zhao *et al.*, 2009; Chen *et al.*, 2013; Tang *et al.*, 2016). As one of the most popular plantation timber species in China, *C. lanceolata* is used extensively in construction, railroad ties, mine timber, furniture

and wood pulp, etc. (Li *et al.*, 2015), because of its good quality timber, rapid growth, straight stem, and highly resistance to bending (Mei *et al.*, 2017). At present, the *C. lanceolata* plantation area is approximately 9 million ha, accounting for 30% of the national afforestation area, which ensures that it occupies an important position in the forest resources of China (Lu *et al.*, 2015; Hu *et al.*, 2017).

For woody plants, conventional breeding is inefficient, expensive, and time-consuming due to its inherently longer

life cycle and the inevitable dilution of desirable traits resulting from genetic separation and gene flow (John *et al.*, 1999; Zhou *et al.*, 2017). More specifically, *C. lanceolata* produces a high content of astringent seeds (seeds filled with tannin-like substance, it does not have the ability to germinate), leading to the unstable yield and low sowing quality. In the past 60 years, breeding workers have made a lot of efforts on genetic improvement of *C. lanceolata* (Shi *et al.*, 2010; Zheng *et al.*, 2015a; Zheng *et al.*, 2015b), such as mass production of cuttings (Li & Gary, 1999), application of tissue culture for propagation (Zhu *et al.*, 2007), and genetic engineering (Gao *et al.*, 2013). However, these genetic improvements are still subject to various restrictions, such as the number of mother tree cuttings, site space, and rooting rate. For the traditional tissue culture, root induction is especially difficult, as well as the induced roots are small and weak, finally affecting the quality of seedlings and the success rate of afforestation (Wen, 2011). In addition, *C. lanceolata* has always lacked a stable genetic transformation system. These limitations make it difficult for the production of improved *C. lanceolata* seedlings to meet the large demands of modern forestry production.

For coniferous species, somatic embryogenesis (SE) is the most effective biotechnology for asexual propagation (Olarieta *et al.*, 2020). The unique developmental potential of SE represents a very powerful biotechnological tool for regenerating plants from cell culture systems, as well as a potential model for investigating the structure, physiological, and molecular events occurring during plant embryogenesis (Hu *et al.*, 2017). Since the first report of SE in Norway spruce in 1985 (Hakman & Von Arnold, 1985), this *in vitro* process has been initiated for a number of coniferous species (Hu *et al.*, 2017), such as *Pinus taeda* (John *et al.*, 1999), *Picea abies* (Hakman *et al.*, 1985), *Pinus massoniana* (Zhang *et al.*, 2006), and *Pinus radiata* (Cerda *et al.*, 2002).

Our laboratory had successfully established the SE system of *C. lanceolata* (Zhou *et al.*, 2017). However, SE of *C. lanceolata* still has some complications needed to be ad-

ressed, such as the minimal induction rate, serious browning, difficult callus differentiation, and weak growth of regenerated plants. Formamide is a transparent oily liquid with a slight ammonia odor. It is hygroscopic and miscible with water and ethanol, slightly soluble in benzene, chloroform, and ether. It has two active functional groups, carbonyl and amide, which are easy to react. Formamide was found to be able to increase the specificity of PCR reaction (Sarkar *et al.*, 1990) and inhibit the activity of RNase and prevent the degradation of RNA (Chomczynski, 1992). It can inhibit the formation of the secondary structure of the DNA molecule. Thus, formamide is the most commonly used denaturant in DNA detection (Han *et al.*, 2010). Formamide Deionized (FD) is deionized formamide, which is more stable than formamide. Now, FD is widely used in biochemistry and molecular biology, especially in nucleic acid research. Our previous studies have shown that low concentration of FD can promote SE of *Liriodendron* hybrids (unpublished data). Besides, there are no other reports on the application of FD in SE of any species. Here, we found that low concentration of FD promoted the somatic embryo maturation of *C. lanceolata*.

Materials and Methods

Plant Materials

The genotype of *C. lanceolata* callus was 01A1, which were induced from immature cones (the zygotic embryo formed after pollination) that were collected from Yangkou State-owned Forest Farm (Fujian, China) (Fig. S1 [suppl.]). Generally, the callus with good genotype can maintain a good growth state after subculture for about 20 days (Fig. 1). At this point of time, the calli look white, transparent, bright, and glossy on the surface, soft and conglutinated in texture, with obvious early proembryo on the surface (Fig. 1A). When observed under an inverted microscope, the

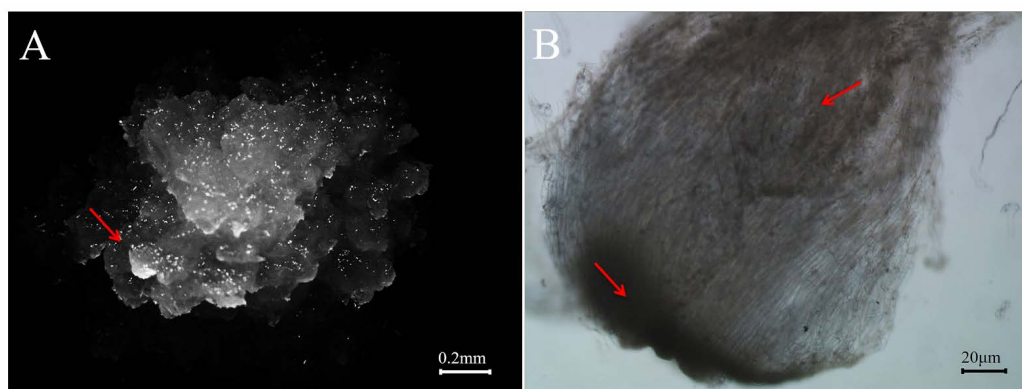


Figure 1. Experimental materials (embryogenic callus) used in the experiment.

A) Embryogenic callus of 01A1, the arrow is the early proembryo.

B) ESM structure of 01A1 embryogenic callus, the arrowheads represent dense embryonic head structure and loose embryonic stem structure, respectively.

embryogenesis suspensor mass (ESM) has obvious dense embryo head and loose suspensors (Fig. 1B).

Callus Culture

DCR (Gupta & Durzan, 1985) is the basic medium for induction and culture of *C. Lanceolata* callus, supplement with 10 mg/L Vitamin C (VC), 0.5 mg/L 6-Benzylaminopurine (6-BA), 0.5 mg/L Kinetin (KT), 450 mg/L Glutamine, 100 mg/L Inositol, 500 mg/L Casein hydrolysate (CH), 2.5 g/L Activated carbon, 2.4 g/L Gelrite, 20 g/L Maltose, and according to different cultivation conditions, a certain amount of Auxin was added. For the callus induction medium of *C. lanceolata*, 2 mg/L 2,4-dichlorophenoxyacetic acid (2,4-D) was added. And, after the callus was successfully induced, the amount of 2,4-D will be halved for subculture. The callus induction and culture conditions were kept in dark at 23 °C.

Somatic Embryo Induction with Different Concentration of FD

DCR is the basic medium for SE induction of *C. lanceolata*, too. Here, we used 1/2 DCR (Only macrosalts were reduced by half, and the other nutrients were consistent with the basic medium of DCR) medium, supplement with 10 mg/L VC, 5 mg/L gibberellic acid (GA₃), 6 mg/L abscisic acid (ABA), 450 mg/L Glutamine, 200 mg/L Aspartic acid, 200 mg/L Proline, 5 g/L Inositol, 500 mg/L CH, 170 g/L Polyethylene glycol (PEG), 2 g/L Activated carbon, 2.4 g/L Gelrite, 25 g/L Maltose, pH 6.0. Then, FD's treatment with concentration gradient of 0 g/L (FD₀), 0.01134 g/L (FD_{0.01134}), 0.1134 g/L (FD_{0.1134}), 1.1134 g/L (FD_{1.134}) and 11.34 g/L (FD_{11.34}) were added to the medium. Repeated at three to five times (3~5 dishes) for each concentration and 6 pieces of callus (each piece of callus is about 0.06 g) were placed per dish, cultured in dark condition at 23 °C. The FD we used is produced from Amresco.

Growth of Somatic Seedlings

Using DCR as a basic medium with 10 mg/L VC, 20 g/L sucrose, 6.8 g/L Agar powder, pH 5.8. The induced cotyledons were then transferred to the growth medium and cultured at 16:8 h (light: dark) photoperiod.

Data Statistics and Analysis

We used graphpad prism version 6.0 (graphpad software, La Jolla, CA, USA) to analyze the number of embryos in each dish. One-way ANOVA was used to test

the difference between each treatment group and the control group. Duncan multiple comparison test was used to compare the mean value with the significance level being set as α equaling to 0.05.

Results

Low Concentration of FD Accelerates SE of *C. lanceolata*

In order to explore the effect of FD on SE of *C. lanceolata*, we inoculated the callus of *C. lanceolata* on somatic embryo induction medium, containing 0 g/L, 0.01134 g/L, 0.1134 g/L, 1.1134 g/L, and 11.34 g/L FD respectively. In general, the cotyledonary embryos can form from the calli of FD₀, FD_{0.01134}, and FD_{0.1134} treatments, while the callus treated with higher concentration (1.1134 g/L and 11.34 g/L) of FD would turn brown after 3 weeks, thus cannot form cotyledon embryos. We found that the proembryogenic masses (PEMs) turned yellow slightly on the seventh day (Fig. 2A, 2E, 2I), but the structure of ESM had no obvious change (Fig. 3A, 3E, 3I). Then, two weeks later, the appearance characteristics of PEMs changed greatly with the color turned yellow (Fig. 2B, 2F, 2J). Furthermore, PEMs entered early embryogeny stage, accompanied by the elongation and condensation of the embryo head (Fig. 3B, 3F, 3J). More specifically, the density of embryo head cells under FD_{0.01134} and FD_{0.1134} were much higher compared to the treatment of FD₀ and embryo head cells under FD_{0.1134} had the highest density. However, with the further increase of FD concentration, callus browning was obviously observed and there were no any changes in its ESM structure (Fig. S2 [suppl.]). On the 35th day, somatic embryos under the FD_{0.01134} and FD_{0.1134} treatments both entered the late embryogeny stage, owning a dense embryonic head and highly vacuolated long polarized cells (Fig. 2G, 2K, red arrows), while control (FD₀) did not. In ESM structure, the somatic embryo under the treatment of FD_{0.1134} is much longer and denser than that under the FD_{0.01134} treatment (Fig. 3G, 3K). Finally, somatic embryos under the FD_{0.01134} treatment entered the early stage of cotyledon embryo on the 49th day, with an indentation separating the developing cotyledon structures (Fig. 2H). Meanwhile, two cotyledons of somatic embryos under the FD_{0.1134} treatment expanded and entered the cotyledon embryo stage (Fig. 2L). Somatic embryos of *C. lanceolata* has developed into the mature cotyledon embryo stage on the 56th day (Fig. 4B, 4C, 4E, 4F), whereas the early cotyledon embryos appeared under control (Fig. 4A, 4D).

The average number of cotyledons per culture dish induced by FD₀, FD_{0.01134}, and FD_{0.1134} treatments was 20, 16.5, and 10.8, respectively. There was no significant difference in the number of cotyledon embryos induced by FD₀ and FD_{0.01134} treatments (Fig. 5), although FD_{0.01134}

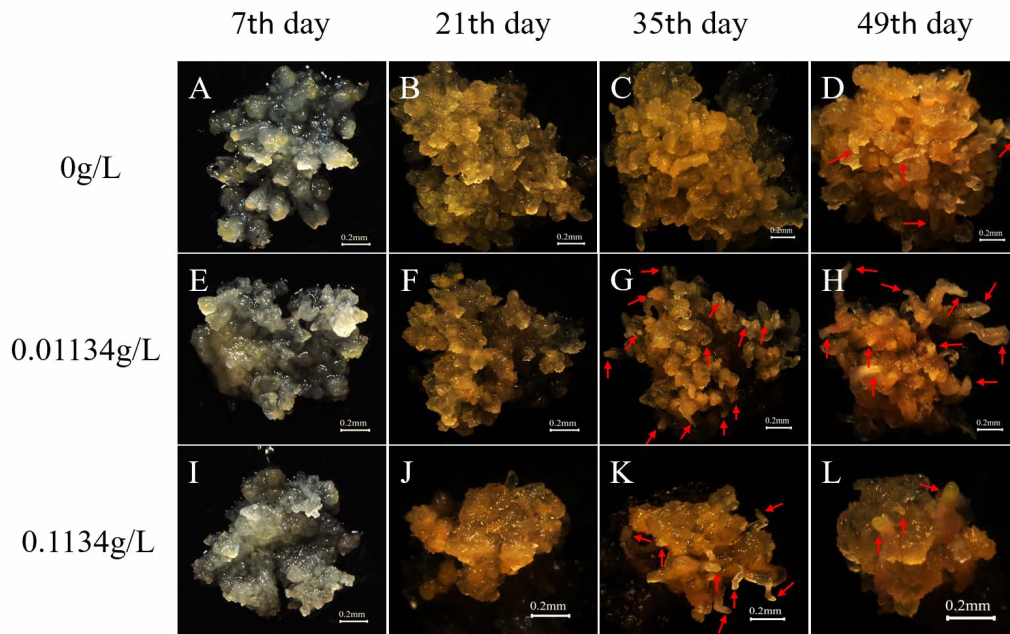


Figure 2. The PEM state of FD_0 , $FD_{0.01134}$ and $FD_{0.1134}$ at day 7, 21, 35 and 49th, respectively. The red arrows indicate the induction of somatic embryos.

treatments shortened the maturation time of somatic embryos by nearly three weeks (Fig. 2G, 4A). In addition, although the maturation time of somatic embryos was shortened under the $FD_{0.1134}$ treatment (Fig. 2K), even faster than $FD_{0.01134}$ treatment (Fig. 3K), the number of cotyledon embryos induced from the $FD_{0.1134}$ treatment was significantly reduced compared with the FD_0 treatment (Fig. 5). Therefore, the optimal FD concentration for accelerating the maturation of *C. lanceolata* somatic embryos here is 0.01134 g/L.

Low Concentration of FD Improves Seedling Rate of *C. lanceolata*.

We then transferred the induced cotyledons to the basic medium, after a month or so of subculture, most cotyledon embryos grew into small seedlings of *C. lanceolata*, and a few of them had taken root (Fig. 6A). Cotyledon embryos that did not grow into small seedlings turned brown and still remained two cotyledons (Fig. 6B). For the treatments of FD_0 , $FD_{0.01134}$, and $FD_{0.1134}$, we obtained 51, 59, and 32

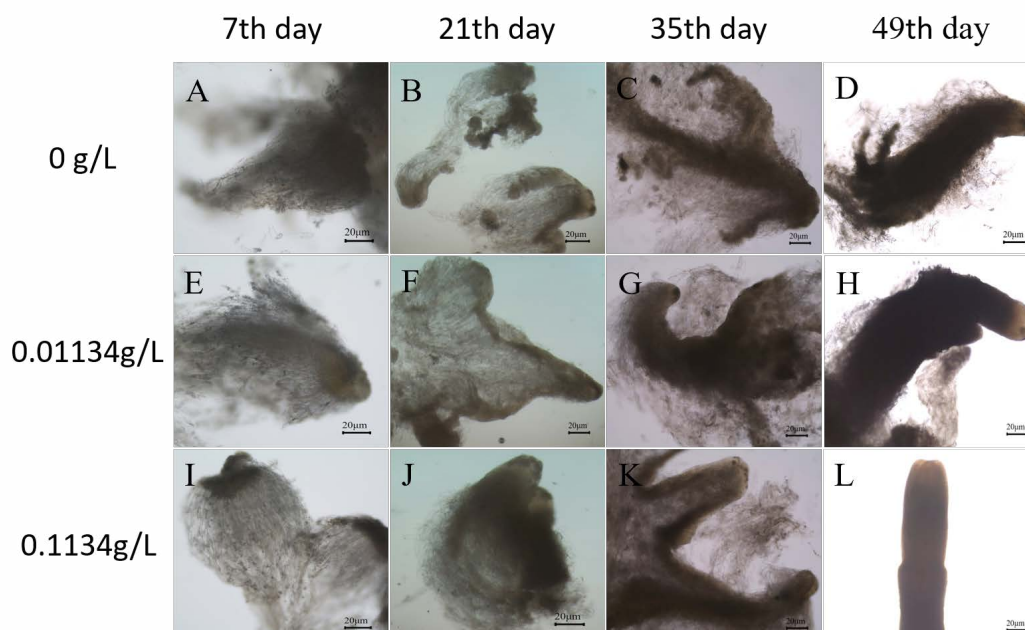


Figure 3. ESM structure of FD_0 , $FD_{0.01134}$ and $FD_{0.1134}$ at day 7, 21, 35 and 49th, respectively.

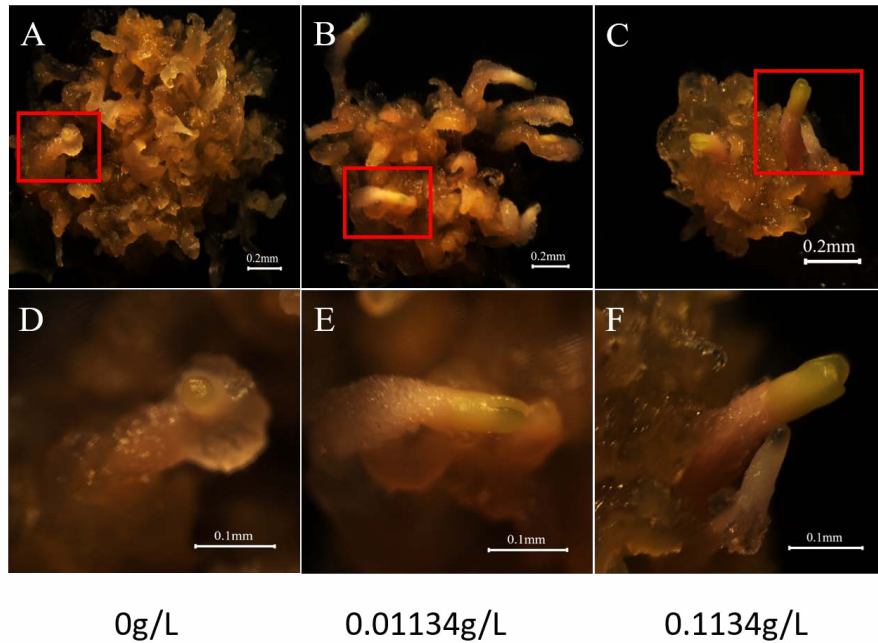


Figure 4. The PEM state of FD₀, FD_{0.01134} and FD_{0.1134} at day 56th, respectively (56 days).

seedlings, respectively, according to a seedling rate of 85.0%, 89.4%, and 59.3%, respectively. These results showed that FD_{0.01134} treatment had the highest seedling rate, followed by the control treatment. For the FD_{0.1134} treatment, ~40% co-

tyledon embryos could not grow into seedlings. Therefore, FD at low concentration has a certain promotion effect on the formation of somatic embryo seedlings.

High Concentration of FD Inhibits the Rooting of *C. lanceolata*.

We then observed the rooting of these seedlings on the basic medium, after subculture for about a month. For the treatments of FD₀, FD_{0.01134}, and FD_{0.1134}, 15, 17, and 8 somatic embryo seedlings were rooting, corresponding to a rooting rate of 29.4%, 28.8%, and 25.0%, respectively. In terms of rooting rate of somatic embryo seedlings, there was little difference between the treatments of FD₀ and FD_{0.01134}, while the rooting rate of the treatment of FD_{0.1134} was significantly lower than the former two. These results indicated that the rooting of somatic embryo seedlings induced by high concentration of FD was inhibited to some extent.

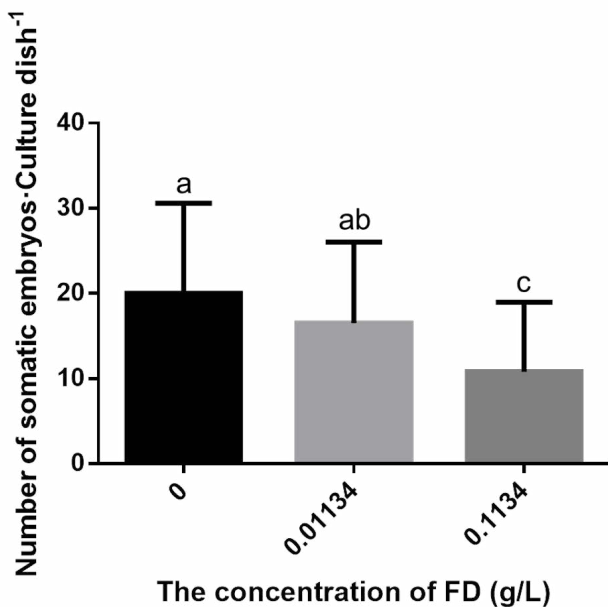


Figure 5. The number of somatic embryos induced by different concentrations of FD.

One-way ANOVA was used to test the difference between the data of each treatment group and the control group. Duncan multiple comparison test was used to compare the mean values. The data shown in the chart were the average values and standard errors of repeated measurements. Different letters indicate significant difference in the level of $\alpha = 0.05$.

Discussion

Plant growth regulators play important roles in the initiation, maintenance, and maturation of somatic embryos (Jimenez, 2005). Previous studies have shown that ABA (Filonova *et al.*, 2000; von Arnold *et al.*, 2005; Vales *et al.*, 2007), PEG (Linossier *et al.*, 1997; Stasolla *et al.*, 2003), polyamines (Wang *et al.*, 2020) and amino acids (Aleith & Richter, 1991; Mohd Din *et al.*, 2016; Carlsson *et al.*, 2017; Solanki *et al.*, 2019) all play important roles in SE. Here, FD is applied to SE of *C. lanceolata* as a new plant growth

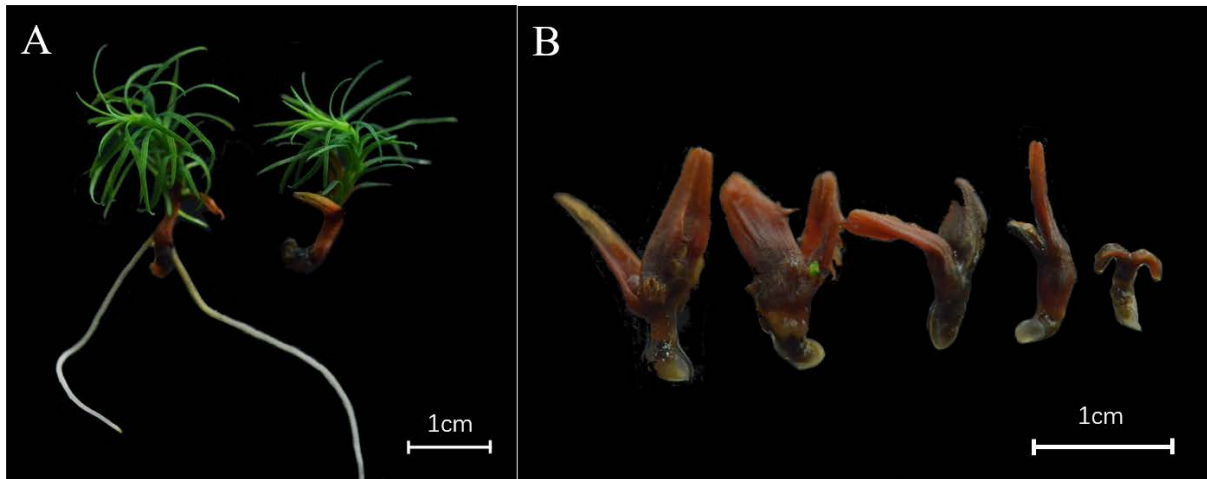


Figure 6. Somatic embryo seedling status. A represents the seedling forming state of somatic embryo seedlings, both rooting and not rooting; B represents the status of five kinds of somatic embryo seedlings that failed to form seedlings.

regulator. We found that 0.01134 g/L FD could shorten the maturation time of somatic embryos by nearly three weeks compared with the control group, while ensuring no significant difference in the number of somatic embryos. However, the mechanism by which FD promotes somatic embryo maturation in *C. lanceolata* is still unclear. As far as we know, there is no published report showing the role of FD in somatic embryo development. Because FD has certain toxicity, it can promote DNA denaturation (Han *et al.*, 2010), we suspect that it produces a certain stress response to the system during the SE of *C. lanceolata*, which leads to the shortening of the SE of *C. lanceolata*. However, the use of higher concentration leads to the decrease of SE or even the failure of SE due to its toxic effect. On the other hand, FD can promote SE of *C. lanceolata*, possibly because it can inhibit the activity of RNA enzyme (Chomczynski, 1992) and protect the mRNA expression of genes related to SE, so as to achieve the function of promoting SE.

In conclusion, this study provides new insights for accelerating SE of gymnosperms. By adding different plant growth regulators to the medium, SE can be accelerated. In our study, FD can significantly promote the maturation of somatic embryos of *C. lanceolata*, which is of great significance for shortening the breeding cycle of *C. lanceolata*.

Acknowledgements

To the Distinguished professor project of Jiangsu Province, and to the Priority Academic Program Development of Jiangsu Higher Education Institutions (PAPD).

References

- Aleith F, Richter G, 1991. Gene expression during induction of somatic embryogenesis in carrot cell suspensions. *Planta* 183 (1): 17-24. <https://doi.org/10.1007/BF00197562>
- Carlsson J, Svennerstam H, Moritz T, Egertsdotter U, Ganeteg U, 2017. Nitrogen uptake and assimilation in proliferating embryogenic cultures of Norway spruce—Investigating the specific role of glutamine. *PLoS One* 12 (e0181785). <https://doi.org/10.1371/journal.pone.0181785>
- Cerda F, Aquea F, Gebauer M, Medina C, Arce-Johnson P, 2002. Stable transformation of *Pinus radiata* embryogenic tissue by *Agrobacterium tumefaciens*. *Plant Cell, Tissue Organ Cult* 70 (3): 251-257. <https://doi.org/10.1023/A:1016508031151>
- Chen GS, Yang ZJ, Gao R, Xie JS, Guo JF, Huang ZQ, Yang YS, 2013. Carbon storage in a chronosequence of Chinese fir plantations in southern China. *For Ecol Manag* 300 (SI): 68-76. <https://doi.org/10.1016/j.foreco.2012.07.046>
- Chomczynski P, 1992. Solubilization in formamide protects RNA from degradation. *Nucleic Acids Res* 20 (14): 3791-2. <https://doi.org/10.1093/nar/20.14.3791>
- Duan HJ, Cao S, Zheng HQ, Hu DH, Lin J, Cui BB, Lin HZ, Hu RY, Wu B, Sun YH, *et al.*, 2017. Genetic Characterization of Chinese fir from Six Provinces in Southern China and Construction of a Core Collection. *Sci Rep* 7 (13814). <https://doi.org/10.1038/s41598-017-13219-0>
- Filonova LH, Bozhkov PV, von Arnold S, 2000. Developmental pathway of somatic embryogenesis in *Picea abies* as revealed by time-lapse tracking. *J Exp Bot* 51 (343): 249-64. <https://doi.org/10.1093/jexbot/51.343.249>
- Gao Y, Bian LM, Shi JS, Xu J, Xi ML, Wang GF, 2013. Expression of a conifer COBRA-like gene CICO-BL1 from Chinese fir (*Cunninghamia lanceolata*) alters the leaf architecture in tobacco. *Plant Physiol Biochem* 70: 483-491. <https://doi.org/10.1016/j.plaphy.2013.06.013>

- Gupta PK, Durzan DJ, 1985. Shoot multiplication from mature trees of Douglas-fir (*Pseudotsuga menziesii*) and sugar pine (*Pinus lambertiana*). *Plant Cell Rep* 4 (4): 177-9. <https://doi.org/10.1007/BF00269282>
- Hakman I, Fowke LC, Von Arnold S, Eriksson T, 1985. The development of somatic embryos in tissue cultures initiated from immature embryos of *Picea abies* (Norway Spruce). *Plant Sci* 38 (1): 53-59. [https://doi.org/10.1016/0168-9452\(85\)90079-2](https://doi.org/10.1016/0168-9452(85)90079-2)
- Hakman I, Von Arnold S, 1985. Plantlet Regeneration through Somatic Embryogenesis in *Picea abies* (Norway Spruce). *J Plant Physiol* 121 (2): 149-158. [https://doi.org/10.1016/S0176-1617\(85\)80040-7](https://doi.org/10.1016/S0176-1617(85)80040-7)
- Han Y, Zhao YC, Zhang J, Jiang CT, Sun J, Ou Y, Yin J, Ye J, 2010. The discussion of domestic deionized formamide in forensic DNA detection. *Forensic Sci Technol* (02): 59-61.
- Hu RY, Sun YH, Wu B, Duan HJ, Zheng HQ, Hu DH, Lin HZ, Tong ZK, Xu JL, Li Y, 2017. Somatic Embryogenesis of Immature *Cunninghamia lanceolata* (Lamb.) Hook Zygotic Embryos. *Sci Rep* 7 (56). <https://doi.org/10.1038/s41598-017-00156-1>
- Jimenez VM, 2005. Involvement of plant hormones and plant growth regulators on in vitro somatic embryogenesis. *Plant Growth Regul* 47 (2-3): 91-110. <https://doi.org/10.1007/s10725-005-3478-x>
- John C, Nanfei X, Gerald SP, Vincent TC, Barbara J, 1999. Natural and somatic embryo development in loblolly pine. *Appl Biochem and Biotechnol* 77 (1-3): 5-17. https://doi.org/10.1007/978-1-4612-1604-9_2
- Li MH, Gary AR, 1999. Eight hundred years of clonal forestry in China: I. traditional afforestation with Chinese fir (*Cunninghamia lanceolata* (Lamb.) Hook.). *New For (Dordr)* 18 (2).
- Li YQ, Deng XW, Huang ZH, Xiang WH, Yan WD, Lei PF, Zhou XL, Peng CH, 2015. Development and Evaluation of Models for the Relationship between Tree Height and Diameter at Breast Height for Chinese-Fir Plantations in Subtropical China. *PloS One* 10 (e01251184). <https://doi.org/10.1371/journal.pone.0125118>
- Linossier L, Veisseire P, Cailloux F, Coudret A, 1997. Effects of abscisic acid and high concentrations of PEG on *Hevea brasiliensis* somatic embryos development. *Plant Sci* 124 (2): 183-191. [https://doi.org/10.1016/S0168-9452\(97\)04597-4](https://doi.org/10.1016/S0168-9452(97)04597-4)
- Lu YH, Coops NC, Wang TL, Wang GY, 2015. A Process-Based Approach to Estimate Chinese Fir (*Cunninghamia lanceolata*) Distribution and Productivity in Southern China under Climate Change. *Forests* 6 (2): 360-379. <https://doi.org/10.3390/f6020360>
- Mei GY, Sun YJ, Saeed S, 2017. Models for Predicting the Biomass of *Cunninghamia lanceolata* Trees and Stands in Southeastern China. *PloS One* 12 (e01697471). <https://doi.org/10.1371/journal.pone.0169747>
- Mohd Din ARJ, Iliyas Ahmad F, Wagiran A, Abd Samad A, Rahmat Z, Sarmidi MR, 2016. Improvement of efficient in vitro regeneration potential of mature callus induced from Malaysian upland rice seed (*Oryza sativa* cv. Panderas). *Saudi J Biol Sci* 23 (1, Supplement): S69-S77. <https://doi.org/10.1016/j.sjbs.2015.10.022>
- Olarieta AC, Moncaleán P, Montalbán IA, 2020. *Pinus canariensis* plant regeneration through somatic embryogenesis. *For Sys* 29 (1): 61-66. <https://doi.org/10.5424/fs/2020291-16136>
- Sarkar G, Kapelner S, Sommer SS, 1990. Formamide can dramatically improve the specificity of PCR. *Nucleic Acids Res* 18 (24): 7465-7465. <https://doi.org/10.1093/nar/18.24.7465>
- Shi JS, Zhen Y, Zheng RH, 2010. Proteome profiling of early seed development in *Cunninghamia lanceolata* (Lamb.) Hook. *J Exp Bot* 61 (9): 2367-2381. <https://doi.org/10.1093/jxb/erq066>
- Solanki M, Sinha A, Shukla LI, 2019. Optimization of in vitro culture media for improvement in yield of Navara ancient Indian medicinal rice. *3 Biotech* 9 (2707). <https://doi.org/10.1007/s13205-019-1797-2>
- Stasolla C, van Zyl L, Egertsdotter U, Craig D, Liu WB, Sederoff RR, 2003. Transcript profiles of stress-related genes in developing white spruce (*Picea glauca*) somatic embryos cultured with polyethylene glycol. *Plant Sci* 165 (4): 719-729. [https://doi.org/10.1016/S0168-9452\(03\)00228-0](https://doi.org/10.1016/S0168-9452(03)00228-0)
- Tang XL, Perez-Cruzado C, Fehrmann L, Gabriel Alvarez-Gonzalez J, Lu YC, Kleinn C, 2016. Development of a Compatible Taper Function and Stand-Level Merchantable Volume Model for Chinese Fir Plantations. *PloS One* 11 (e01476101). <https://doi.org/10.1371/journal.pone.0147610>
- Vales T, Feng XR, Ge L, Xu NF, Cairney J, Pullman GS, Peter GF, 2007. Improved somatic embryo maturation in loblolly pine by monitoring ABA-responsive gene expression. *Plant Cell Rep* 26 (2): 133-143. <https://doi.org/10.1007/s00299-006-0221-7>
- von Arnold S, Bozhkov P, Clapham D, Dyachok J, Filonova L, Hogberg KA, Ingouff M, Wiweger M, 2005. Propagation of Norway spruce via somatic embryogenesis. *Plant Cell, Tissue Organ Cult* 81 (3): 323-329. <https://doi.org/10.1007/s11240-004-6662-1>
- Wang DD, Guo YL, Long XF, Pan Y, Yang DJ, Li R, Lu Y, Chen Y, Shi JS, Chen JH, 2020. Exogenous Spermidine Promotes Somatic Embryogenesis of *Cunninghamia lanceolata* by Altering the Endogenous Phytohormone Content. *Phyton-Int J Exp Bot* 89 (1): 27-34. <https://doi.org/10.32604/phyton.2020.08971>
- Wen YF, 2011. The research of initiation and subculture of embryogenesis tissue of *Cunninghamia lanceolata* (Lamb.) Hook based on the immature zygotic embryo, Fujian Agriculture and Forestry University: 74.

- Zhang Y, Wei ZM, Xi ML, Shi JS, 2006. Efficient plant regeneration in vitro in *Pinus massoniana* L. *J Mol Cell Biol* 39 (03): 271-276.
- Zhao MF, Xiang WH, Peng CH, Tian DL, 2009. Simulating age-related changes in carbon storage and allocation in a Chinese fir plantation growing in southern China using the 3-PG model. *For Ecol Manag* 257 (6): 1520-1531. <https://doi.org/10.1016/j.foreco.2008.12.025>
- Zheng HQ, Duan HJ, Hu DH, Li Y, Hao YB, 2015a. Genotypic variation of *Cunninghamia lanceolata* revealed by phenotypic traits and SRAP markers. *Dendrobiology* 74: 85-94. <https://doi.org/10.12657/denbio.074.009>
- Zheng HQ, Hu DH, Wang RH, Wei RP, Yan S, 2015b. Assessing 62 Chinese Fir (*Cunninghamia lanceolata*) Breeding Parents in a 12-Year Grafted Clone Test. *Forests* 6 (10): 3799-3808. <https://doi.org/10.3390/f6103799>
- Zhou XH, Zheng RH, Liu GX, Xu Y, Zhou YW, Laux T, Zhen Y, Harding SA, Shi JS, Chen JH, 2017. Desiccation Treatment and Endogenous IAA Levels Are Key Factors Influencing High Frequency Somatic Embryogenesis in *Cunninghamia lanceolata* (Lamb.) Hook. *Front Plant Sci* 8 (2054). <https://doi.org/10.3389/fpls.2017.02054>
- Zhu ML, Wang J, Yu Y, Liu SJ, Wei ZM, 2007. Efficient organogenesis and plantlet regeneration in the timber species *Cunninghamia lanceolata* (Lamb.) Hook. *In Vitro Cell Dev Biol plant* 43 (5): 449-455. <https://doi.org/10.1007/s11627-007-9092-z>