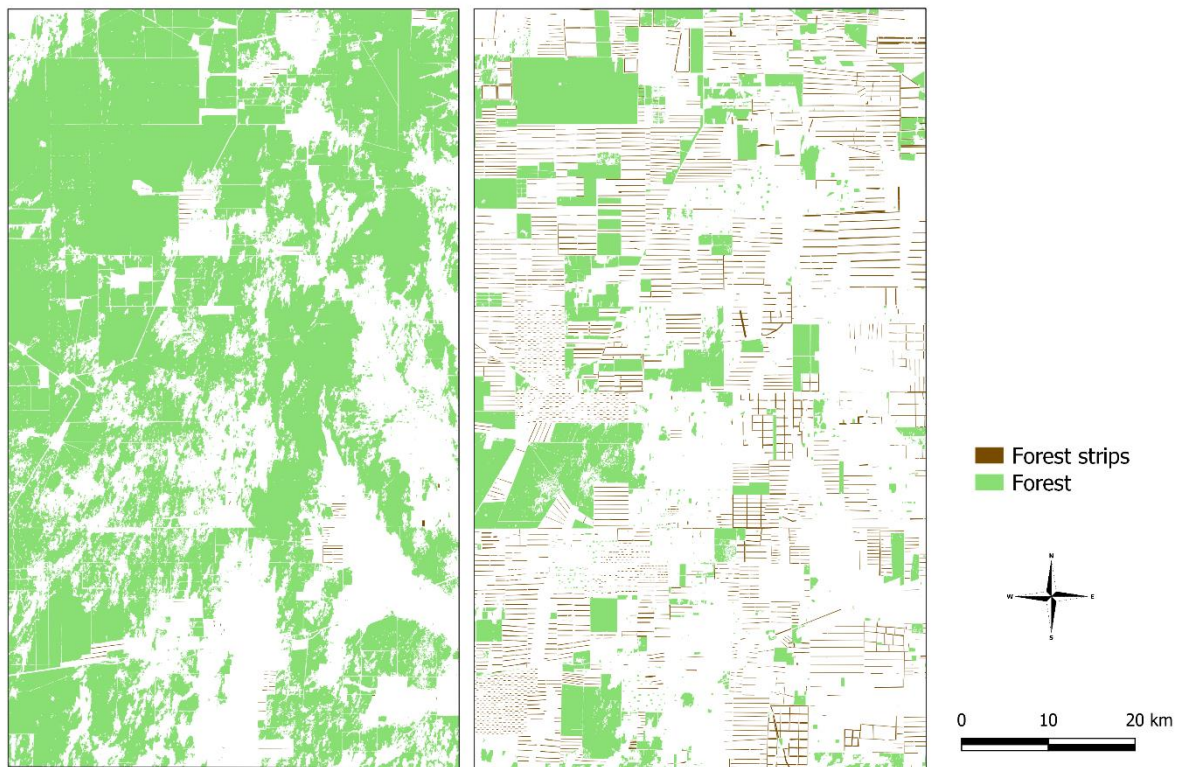


**Figure S1.** Area and spatial configuration of the forest (green) and forest strips (brown) in the study area of Chaco Province in 1988 (above) and 2015 (below). White areas correspond almost totally to cultivated lands.

1



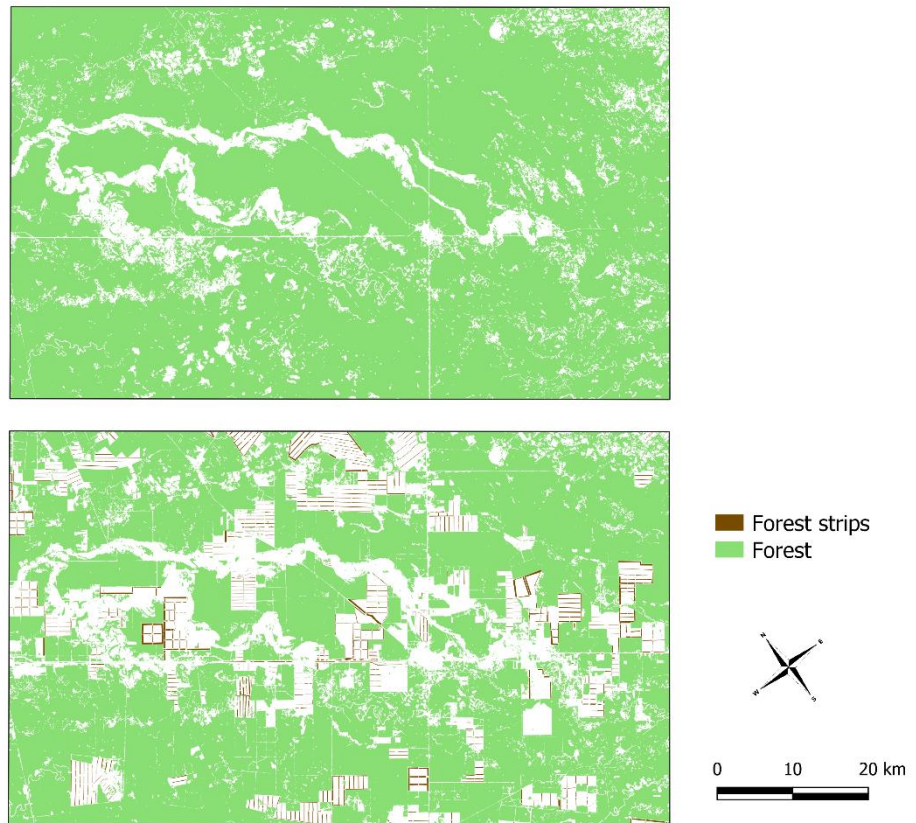
2

3

4 **Figure S2.** Area and spatial configuration of the forest and forest strips in the study area of  
5 Santiago del Estero Province in 1988 (left) and 2015 (right). White areas correspond almost  
6 totally to cultivated lands.

7

1



2

3

4 **Figure S3.** Area and spatial configuration of the forest and forest strips in the study area in  
5 Formosa Province in 1988 (above) and 2015 (below). White areas include cultivated land and  
6 wetlands.

7