




## ORIGINAL RESEARCH

## Values of the apparent diffusion coefficient in the differential diagnosis of tumors of the posterior fossa in the pediatric population of Colombia

Valores del coeficiente de difusión aparente en el diagnóstico diferencial de los tumores de la fosa posterior en población pediátrica de Colombia

Andrés Fernando López-Cadena<sup>1,2</sup>  Luz Ángela Moreno-Gómez<sup>1,2</sup>  Diego Armando Guerrero-Gómez<sup>2</sup> 

<sup>1</sup> Fundación Hospital Pediátrico de La Misericordia - Diagnostic Imaging Functional Unit - Bogotá D.C. - Colombia.

<sup>2</sup> Universidad Nacional de Colombia - Bogotá Campus - Faculty of Medicine - Department of Diagnostic Imaging - Bogotá D.C. - Colombia.



Open access

Received: 14/09/2020

Accepted: 01/03/2021

**Corresponding author:** Andrés Fernando López-Cadena. Unidad Funcional de Imágenes Diagnósticas, Fundación Hospital de la Misericordia. Bogotá D.C. Colombia. Email: radaftc81@gmail.com.

**Keywords:** Magnetic Resonance Imaging; Diffusion Magnetic Resonance Imaging; Neoplasms; Cranial Fossa, Posterior; Pediatrics (MeSH).

**Palabras clave:** Imagen por resonancia magnética; Imagen de difusión por resonancia magnética; Neoplasia; Fosa craneal posterior; Pediatría (DeCS).

**How to cite:** López-Cadena AF, Moreno-Gómez LA, Guerrero-Gómez DA. Values of the apparent diffusion coefficient in the differential diagnosis of tumors of the posterior fossa in the pediatric population of Colombia Rev. Fac. Med. 2021;70(1):e90537. English. doi: <https://doi.org/10.15446/revfacmed.v70n1.90537>.

**Cómo citar:** López-Cadena AF, Moreno-Gómez LA, Guerrero-Gómez DA. [Valores del coeficiente de difusión aparente en el diagnóstico diferencial de los tumores de fosa posterior en población pediátrica de Colombia]. Rev. Fac. Med. 2021;70(1):e90537. English. doi: <https://doi.org/10.15446/revfacmed.v70n1.90537>.

**Copyright:** ©2021 Universidad Nacional de Colombia. This is an open access article distributed under the terms of the [Creative Commons Attribution License](https://creativecommons.org/licenses/by/4.0/), which permits unrestricted use, distribution, and reproduction in any medium, the original author and source are credited.



### Abstract

**Introduction:** Posterior fossa tumors are common in the pediatric population and require adequate characterization by means of structural magnetic resonance imaging (MRI) and advanced MRI techniques to achieve an appropriate therapeutic approach.

**Objectives:** To determine the usefulness of apparent diffusion coefficient (ADC) values for the differential diagnosis of posterior fossa tumors in the pediatric population treated at a reference hospital in Bogotá D.C., Colombia.

**Materials and methods:** Diagnostic accuracy study carried out in 28 pediatric patients diagnosed with posterior fossa tumor between 2017 and 2019 at the Fundación Hospital de la Misericordia, a quaternary care institution. ADC values were measured and compared with histopathological diagnosis as gold standard, obtaining sensitivity, specificity, and positive and negative predictive values. Differences between medians were determined using the Kruskal-Wallis test. The p value between the quantitative ADC value and the gold standard was calculated using Pearson's chi-squared test, with a significance level of  $p < 0.05$ .

**Results:** The mean age of the participants was 83.9 months (SD=57 months), and 64.28% of them were boys. Medulloblastoma was the most frequent tumor (39.29%). For the diagnosis of medulloblastoma, an ADC value of  $0.6210 \times 10^{-3} \text{mm}^2/\text{s}$  was established, obtaining a sensitivity and specificity of 81.82% and 76.47%, respectively. For the diagnosis of pilocytic astrocytoma, an ADC of  $1.03 \times 10^{-3} \text{mm}^2/\text{s}$  was determined, with a sensitivity of 66.67% and a specificity of 89.40%.

**Conclusions:** ADC value is useful to classify and differentiate posterior fossa tumors in the Colombian pediatric population, showing an inversely proportional relationship with the tumor grade.

### Resumen

**Introducción.** Los tumores de la fosa posterior son frecuentes en población pediátrica y requieren de una adecuada caracterización mediante resonancia magnética (RM) estructural y técnicas avanzadas de RM para lograr un enfoque terapéutico apropiado.

**Objetivo.** Determinar la utilidad de los valores del coeficiente de difusión aparente (ADC cuantitativo) en el diagnóstico diferencial de los tumores de la fosa posterior en población pediátrica de un hospital de referencia en Bogotá D.C., Colombia.

**Materiales y métodos.** Estudio de validez de prueba diagnóstica realizado en 28 pacientes pediátricos diagnosticados con tumor de fosa posterior entre 2017 y 2019 en la Fundación Hospital Pediátrico de la Misericordia, hospital de IV nivel de complejidad. Se midieron los valores del ADC cuantitativo, los cuales fueron comparados con el diagnóstico histopatológico como estándar de oro, obteniendo datos de sensibilidad, especificidad, valores predictivos positivos y negativos. Las diferencias entre medianas fueron determinadas mediante la prueba de Kruskal-Wallis. El valor  $p$  entre el valor del ADC cuantitativo y el estándar de oro se calculó con la prueba  $\chi^2$  de Pearson, con un nivel de significancia de  $p < 0.05$ .

**Resultados.** La edad media fue 83.9 meses (DE=57 meses) y 64.28% fueron niños. El tumor más frecuente fue el meduloblastoma (39.29%). Para el diagnóstico de meduloblastoma se estableció un valor ADC cuantitativo de  $0.6210 \times 10^{-3} \text{mm}^2/\text{s}$ , obteniéndose una sensibilidad y especificidad de 81.82% y 76.47%, respectivamente, y para el diagnóstico de astrocitoma pilocítico, un ADC cuantitativo de  $1.03 \times 10^{-3} \text{mm}^2/\text{s}$ , con una sensibilidad de 66.67% y una especificidad de 89.40%.

**Conclusiones.** El valor del ADC cuantitativo es útil para clasificar y diferenciar los tumores de la fosa posterior en población pediátrica colombiana, mostrando una relación inversamente proporcional con el grado tumoral.

## Introduction

Central nervous system tumors are frequent in the pediatric population, accounting for 20% of all neoplasms in children under 18 years of age; 40% of these occur in the posterior fossa.<sup>1,2</sup> The primary histologic subtypes of posterior fossa tumors are medulloblastoma, pilocytic astrocytoma, diffuse midline glioma, ependymoma, and atypical teratoid/rhabdoid.<sup>2,3</sup>

Currently, the World Health Organization (WHO) (cited by Wesseling & Capper<sup>4</sup>) recommends classifying posterior fossa tumors according to their phenotype (histology) and genotype (molecular characterization); however, in some countries such as Colombia, the molecular studies necessary to achieve such characterization are not yet routinely performed. In view of the foregoing, and given the histological heterogeneity of posterior fossa tumors, a proper imaging characterization of these neoplasms is essential to develop an adequate therapeutic approach.<sup>2,3</sup>

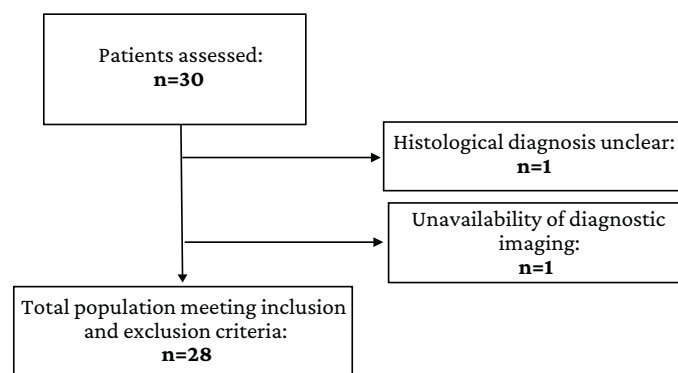
Magnetic resonance imaging (MRI) is the test of choice to study posterior fossa tumors; nevertheless, structural findings can be nonspecific when classifying them and differentiating their possible histological grades, especially in scenarios that may represent a diagnostic challenge, such as differentiating between a pilocytic astrocytoma and a medulloblastoma.<sup>1</sup> In this regard, it is critical to assess the usefulness of radiological findings derived from advanced MR imaging, such as the DWI (diffusion-weighted imaging) sequence and the ADC (apparent diffusion coefficient) map, which provide functional information on tumor behavior and help establish an adequate differential diagnosis that allows predicting the histological subtype of the tumor.<sup>5-9</sup>

Given this scenario, the objective of this study is to determine the usefulness of apparent diffusion coefficient values (quantitative ADC) for the differential diagnosis of posterior fossa tumors in a pediatric population of a reference hospital in Bogotá, D.C., Colombia.

## Materials and methods

### Study type and population

Diagnostic validity study. All pediatric patients who were diagnosed with posterior fossa tumor at the Fundación Hospital Pediátrico de La Misericordia (quaternary care center) between 2017 and 2019 and underwent MRI with DWI sequence that allowed measuring quantitative ADC values (N=30) were selected. Patients whose diagnosis was not confirmed by histological analysis and in whom MRI scans could not be obtained were excluded, leaving a final sample of 28 participants (Figure 1).



**Figure 1.** Patient inclusion and exclusion flowchart.

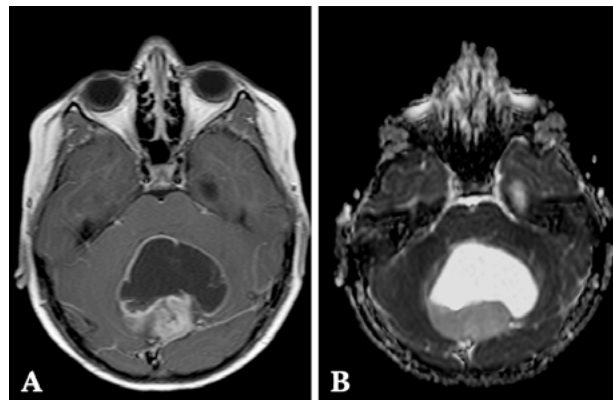
Source: Own elaboration.

## Procedures

Information was collected from the Picture Archiving and Communication System (PACS) reports accessible in DICOM file format in the medical records of the Fundación Hospital Pediátrico de La Misericordia database.

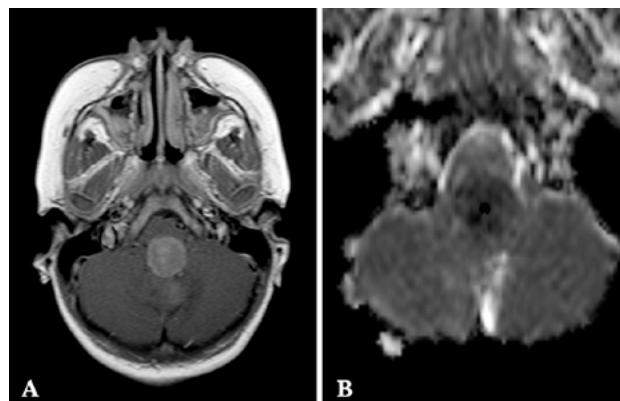
The diagnostic images of the patients were obtained using a Philips Multiva 1.5T (Tesla) MRI system in accordance with the institutional pediatric neuro-oncology protocol that includes, but is not limited to, DWI sequence with b0 and b1000 factors, and axial ADC map with values of  $10^{-3}\text{mm}^2/\text{s}$ .

A radiologist with experience in pediatric neuroimaging estimated the median quantitative ADC value at their workstation and without knowing the final histopathological diagnosis. For this measurement, areas of interest of 5-10mm established by manual technique were used in the solid tumor area, which was visually identified as the area with lower signal intensity (Figures 2 and 3). It should be noted that having diffusion restriction has traditionally been considered a qualitative item and that there is diffusion restriction on an MRI scan when 2 conditions are met: i) having hyperintense appearance in the DWI sequence and ii) having hypointense appearance in the ADC map.



**Figure 2.** Midline posterior fossa mass with solid and cystic component. A) Axial post-gadolinium T1W-SE: the solid component shows avid postcontrast heterogeneous enhancement and no diffusion restriction (not shown); B) axial ADC map: median quantitative ADC value:  $1.62 \times 10^{-3}\text{mm}^2/\text{s}$ . Histopathological diagnosis of pilocytic astrocytoma.

Source: Document obtained during the course of the study.



**Figure 3.** Solid mass in the midline of the posterior fossa occupying the fourth ventricle. A) post-gadolinium axial T1W-SE: the solid component exhibits avid post-contrast enhancement and peripheral diffusion restriction (not shown); B) axial ADC map: median quantitative ADC value:  $0.210 \times 10^{-3}\text{mm}^2/\text{s}$ . Histopathological diagnosis of medulloblastoma.

Source: Document obtained during the course of the study.

## Statistical analysis

Sensitivity, specificity, and positive and negative predictive values were obtained and processed using STATA and SPSS statistical software and compared with histopathological diagnosis as the gold standard for phenotypic tumor characterization.

Differences between medians were determined using the Kruskal-Wallis test. The *p*-value between the quantitative ADC value and the gold standard was calculated using the Pearson's chi-squared test, with a statistical significance level of  $p < 0.05$ .

## Ethical considerations

The study took into account the ethical principles for medical research involving human subjects established by the Declaration of Helsinki<sup>10</sup> and the scientific, technical and administrative standards for health research of Resolution 8430 of 1993 of the Ministry of Health of Colombia.<sup>11</sup> The research was approved by the Ethics Committee of the Fundación Hospital Pediátrico de La Misericordia, in accordance with Minutes No. CEI 201-19 of May 27, 2019.

## Results

### Epidemiological characterization

The mean age of the participants was 83.9 months, with a standard deviation (SD) of 57 months, and the majority (64.28%,  $n=18$ ) were male. Medulloblastoma was the most common tumor (39.29%,  $n=11$ ), followed by pilocytic astrocytoma (32.14%,  $n=9$ ) (Table 1).

**Table 1.** Distribution of the tumor histologic subtypes included.

Histological diagnosis	n	%
Medulloblastoma	11	39.29
Pilocytic astrocytoma	9	32.14
Diffuse midline glioma	4	14.29
Ependymoma	3	10.71
Teratoid/Rhabdoid	1	3.57
Total	28	100

Source: Own elaboration.

### Imaging features

Based on the largest diameter of the lesion, the average tumor size was 42.8mm, with a SD of 15.4mm.

71.42% of tumors infiltrated into adjacent structures, 85.71% had structural signs of mass effect with adjacent tissue displacement, 67.85% were considered heterogeneous (cystic component, calcifications, and blood traces), and 78.57% had signs of intra- or perilesional vasogenic edema.

Following the administration of intravenous paramagnetic contrast agent, 71.43% of neoplasms showed heterogeneous enhancement patterns; 17.86% showed homogeneous enhancement; and 10.71% showed no significant enhancement. Leptomeningeal enhancement suggestive of meningeal spreading was also detected in three patients.

Qualitative restriction to the movement of water molecules in the DWI sequence and ADC map occurred in half of the lesions evaluated.

Comparison between the median values of the quantitative ADC map and the qualitative DWI restriction variable showed a statistically significant difference ( $p=0.0001$ ): the median quantitative ADC value was approximately  $0.57 \times 10^{-3} \text{mm}^2/\text{s}$  in patients with qualitative restriction, whereas it was  $1.645 \times 10^{-3} \text{mm}^2/\text{s}$  in those without qualitative restriction in the DWI sequence with factors  $b_0$  and  $b1000$ .

The mean value of quantitative ADC for all histologic types and grades included was  $1.09 \times 10^{-3} \text{mm}^2/\text{s}$ , with a SD of  $0.65 \times 10^{-3} \text{mm}^2/\text{s}$ .

Statistical analysis between the quantitative ADC variable and tumor histology (gold standard), performed with the non-parametric Kruskal-Wallis test, demonstrated statistical significance ( $p<0.05$ ) for the diagnosis of medulloblastoma and pilocytic astrocytoma (Table 2).

**Table 2.** Median apparent diffusion coefficient based on histological diagnosis.

Histological diagnosis	Median quantitative ADC ( $\times 10^{-3} \text{mm}^2/\text{s}$ )	<i>p</i> -value
Medulloblastoma	0.56	0.001
Tumor other than medulloblastoma	1.16	
Pilocytic astrocytoma	1.71	0.0054
Tumor other than pilocytic astrocytoma	0.63	
Diffuse midline glioma	1.62	0.05
Tumor other than diffuse midline glioma	0.66	
Ependymoma	0.63	0.23
Tumor other than ependymoma	0.97	
Teratoid/Rhabdoid	0.79	0.9
Tumor other than rhabdoid-teratoid	0.95	

Source: Own elaboration.

### Diagnostic performance of the quantitative ADC value

The quantitative ADC value that, collectively, had the highest sensitivity and specificity to indicate the histological type of tumors with statistically significant difference (medulloblastoma and pilocytic astrocytoma) was established as the best cut-off point for this purpose. Thus, a quantitative ADC value  $<0.6210 \times 10^{-3} \text{mm}^2/\text{s}$  was the best diagnostic performance for detecting medulloblastoma, while a value  $<1.03 \times 10^{-3} \text{mm}^2/\text{s}$  represented the best diagnostic capacity to rule out the presence of pilocytic astrocytoma (Table 3).

**Table 3.** Proposed apparent diffusion coefficient cut-off points and their diagnostic performance for the differentiation of medulloblastoma and pilocytic astrocytoma.

Variable	Medulloblastoma	Pilocytic astrocytoma
Proposed cut-off points for apparent diffusion coefficient	$0.6210 \times 10^{-3} \text{mm}^2/\text{s}$	$1.03 \times 10^{-3} \text{mm}^2/\text{s}$
Sensitivity	81.82%	66.67%
Specificity	76.47%	89.47%
Positive predictive value	69.23%	75.00%
Negative predictive value	86.67%	85.00%

Source: Own elaboration.

### Discussion

According to Barkovich & Raybaud<sup>1</sup>, posterior fossa tumors in the pediatric population are common and include neoplasms of different grades (from low to high grade), a biological feature that dramatically influences the treatment approach to and prognosis

of these patients. Therefore, proper identification of this type of tumor through diagnostic imaging is essential for proper management.

Based on the above, the present study discusses the usefulness of quantitative ADC values for the differential diagnosis of posterior fossa tumors in the pediatric population of Colombia since there are no data on this subject in the country to date.

In the present study, the median quantitative ADC in each histological subtype was also taken as a reference and compared with the median quantitative ADC in the other histological subtypes found. As a result of this analysis, the relationship between the value of quantitative ADC in medulloblastoma and in tumors other than medulloblastoma, and between the value of quantitative ADC in pilocytic astrocytoma and in tumors other than pilocytic astrocytoma were identified as variables with statistically significant differences (Table 2). For these variables, the cut-off point was established as the one with the best diagnostic performance in terms of sensitivity, specificity, and positive and negative predictive values. In this sense, it was identified that a quantitative ADC value  $<0.6210 \times 10^{-3} \text{mm}^2/\text{s}$  provides the best diagnostic capability for medulloblastoma, while one of  $<1.03 \times 10^{-3} \text{mm}^2/\text{s}$  provides the best performance to rule out the presence of pilocytic astrocytoma taking into account the greater specificity found in the relationship between the median quantitative ADC and the presence of pilocytic astrocytoma.

These cut-off points are consistent with what was previously described by different authors who have attempted to standardize diagnostic quantitative ADC values in posterior fossa tumors in the pediatric population and have identified an inversely proportional relationship between this value and tumor grade in the posterior fossa, with lower values for more aggressive tumors, as in the case of medulloblastoma.<sup>6,12-16</sup>

Thus, Rumboldt *et al.*,<sup>6</sup> in a retrospective study carried out in the United States, reviewed brain MRI studies that included ADC maps of 32 pediatric patients with histologically proven cerebellar neoplasm. They found that ADC values were significantly higher in pilocytic astrocytoma ( $1.65 \pm 0.27 \times 10^{-3} \text{mm}^2/\text{s}$ ) than in ependymoma ( $1.10 \pm 0.11 \times 10^{-3} \text{mm}^2/\text{s}$ ) and medulloblastoma ( $0.66 \pm 0.15 \times 10^{-3} \text{mm}^2/\text{s}$ ).

On the other hand, Mohamed *et al.*,<sup>16</sup> in a prospective study conducted in Egypt between May 2018 and August 2019 in 30 pediatric patients (2-17 years) with posterior fossa masses, found that ADC values were significantly different between pilocytic astrocytoma ( $1.43 \pm 0.28 \times 10^{-3} \text{mm}^2/\text{s}$ ) and medulloblastoma ( $0.71 \pm 0.21 \times 10^{-3} \text{mm}^2/\text{s}$ ), with a  $p < 0.001$ .

Given the findings, it is considered that the proposed cut-off points can be used in the Colombian pediatric population; however, studies with larger sample sizes and in different population groups are required to validate the values proposed specifically for the diagnosis of medulloblastoma and pilocytic astrocytoma.

The limitations of the present study include its retrospective nature, as well as the lack of a molecular characterization of the different tumor subtypes, which is associated with the fact that the molecular studies needed to achieve such characterization are not yet routinely performed in Colombia. On the contrary, the sample size, the fact that low- and high-grade tumors were available, and that the same MRI protocol was followed in all patients were considered as strengths, thus allowing for the adequate interpretation of the results and a comparative analysis of the quantitative ADC.

## Conclusions

The quantitative ADC value is useful to classify and differentiate posterior fossa tumors in the Colombian pediatric population, showing an inversely proportional relationship with the histological grade of the tumor. In this sense, it is recommended to use a quantitative

ADC value of  $\leq 0.62 \times 10^{-3} \text{mm}^2/\text{s}$  as a cut-off point for the diagnosis of medulloblastoma and a value of  $\leq 1.03 \times 10^{-3} \text{mm}^2/\text{s}$  to rule out the presence of pilocytic astrocytoma in this population.

### Conflicts of interest

None stated by the authors.

### Funding

None stated by the authors.

### Acknowledgments

To the Universidad Nacional de Colombia and the Fundación Hospital Pediátrico de La Misericordia.

### References

1. Barkovich AJ, Raybaud C. Pediatric Neuroimaging: 5th ed. Philadelphia: Lippincott Williams & Wilkins; 2012.
2. Cano-Muñoz I, Enriquez-Caballero NC. Tumores de fosa posterior en pacientes pediátricos y su correlación clínica, radiológica y anatomopatológica. *Anales de Radiología Mexico*. 2010;9(4):185-205.
3. Poretti A, Meoded A, Huisman TA. Neuroimaging of pediatric posterior fossa tumors including review of the literature. *J Magn Reson Imaging*. 2012;35(1):32-47. <https://doi.org/b4tpsn>.
4. Wesseling P, Capper D. WHO 2016 Classification of gliomas. *Neuropathology Appl Neurobiol*. 2018;44(2):139-50. <https://doi.org/gijprw>.
5. Louis DN, Perry A, Reifenberger G, von Deimling A, Figarella-Branger D, Cavenee WK, *et al*. The 2016 World Health Organization Classification of Tumors of the Central Nervous System: a summary. *Acta Neuropathol*. 2016;131(6), 803-20. <https://doi.org/f8mspx>.
6. Rumboldt Z, Camacho DLA, Lake D, Welsh CT, Castillo M. Apparent diffusion coefficients for differentiation of cerebellar tumors in children. *Am J Neuroradiol*. 2006;27(6):1362-9.
7. Koral K, Mathis D, Gimi B, Gargan L, Weprin B, Bowers DC, *et al*. Common pediatric cerebellar tumors: Correlation between cell densities and apparent diffusion coefficient metrics. *Radiology*. 2013;268(2):532-7. <https://doi.org/f45pw5>.
8. Pienc T, Kranz P, Roth C, Leong D, Wei P, Provenzale JM. Use of apparent diffusion coefficient values for diagnosis of pediatric posterior fossa tumors. *Neuroradiol J*. 2014;27(2):233-44. <https://doi.org/hnpg>.
9. Jaremko JL, Jans LBO, Coleman LT, Ditchfield MR. Value and limitations of diffusion-weighted imaging in grading and diagnosis of pediatric posterior fossa tumors. *Am J Neuroradiol*. 2010;31(9):1613-16. <https://doi.org/csvzwc>.
10. World Medical Association (WMA). WMA Declaration of Helsinki – Ethical principles for medical research involving human subjects. Fortaleza: 64<sup>th</sup> WMA General Assembly; 2013.
11. Colombia. Ministerio de Salud. Resolución 8430 de 1993 (octubre 4): Por la cual se establecen las normas científicas, técnicas y administrativas para la investigación en salud. Bogotá D.C.; octubre 4 de 1993.
12. Al-Sharydah AM, Al-Arfaj HK, Saleh Al-Muhaish H, Al-Suhaibani SS, Al-Aftan MS, Almedallah DK, *et al*. Can apparent diffusion coefficient values help distinguish between different types of pediatric brain tumors? *Eur J Radiol*. 2019;6:49-55. <https://doi.org/hnph>.
13. Ahmeda H, Darwisha EA, abo-bakrkhatabb OM. Role of Diffusion Mri In Differentiation Between The Common Pediatric Posterior Fossa Brain Tumors. *The Egyptian Journal of Hospital Medicine*. 2018;73(2):6090-6. <https://doi.org/hnpj>.
14. Castillo M, Smith JK, Kwock L, Wilber K. Apparent diffusion coefficients in the evaluation of high-grade cerebral gliomas. *Am J Neuroradiol*. 2001;22(1):60-4.
15. Porto L, Jurcoane A, Schwabe D, Kieslich M, Hattingen E. Differentiation between high and low grade tumours in paediatric patients by using apparent diffusion coefficients. *Eur J Paediatr Neurol*. 2013;17(3):302-7. <https://doi.org/f4vqwq>.
16. Esa MMM, Mashaly EM, El-Sawaf YF, Dawoud M. Diagnostic accuracy of apparent diffusion coefficient ratio in distinguishing common pediatric CNS posterior fossa tumors. *Egypt J Radiol Nucl Med*. 2020;51(1):76. <https://doi.org/hnphd>.